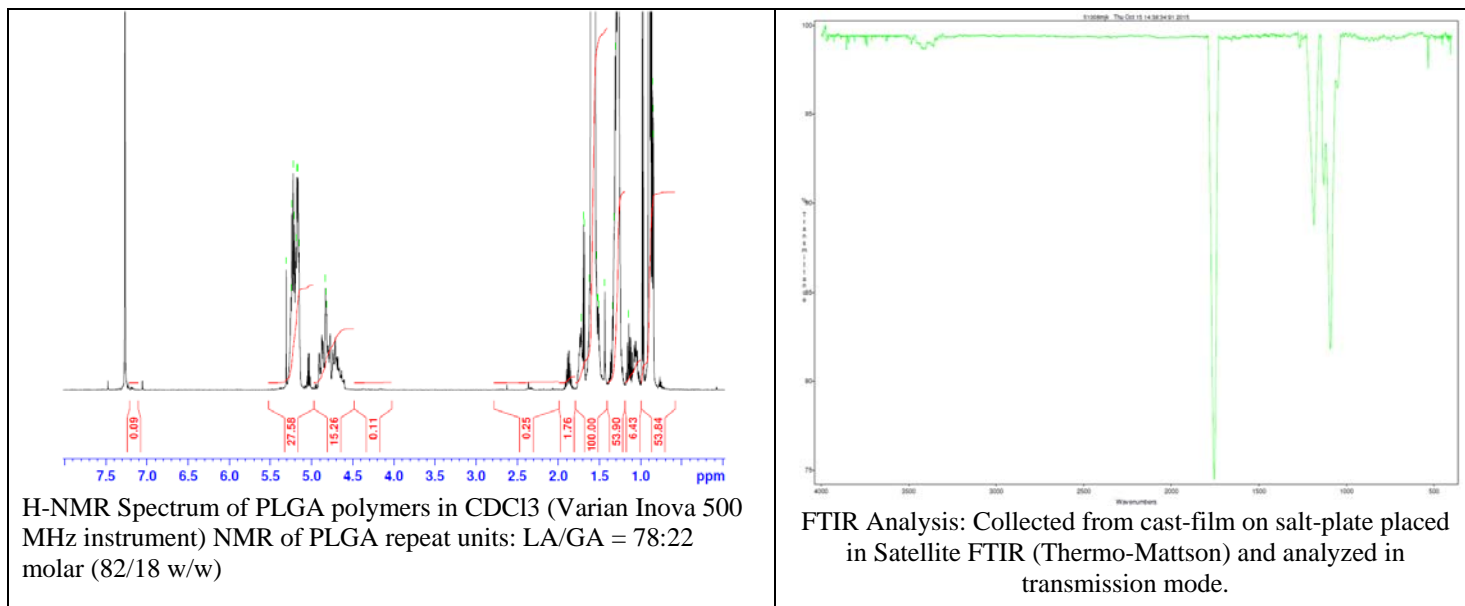
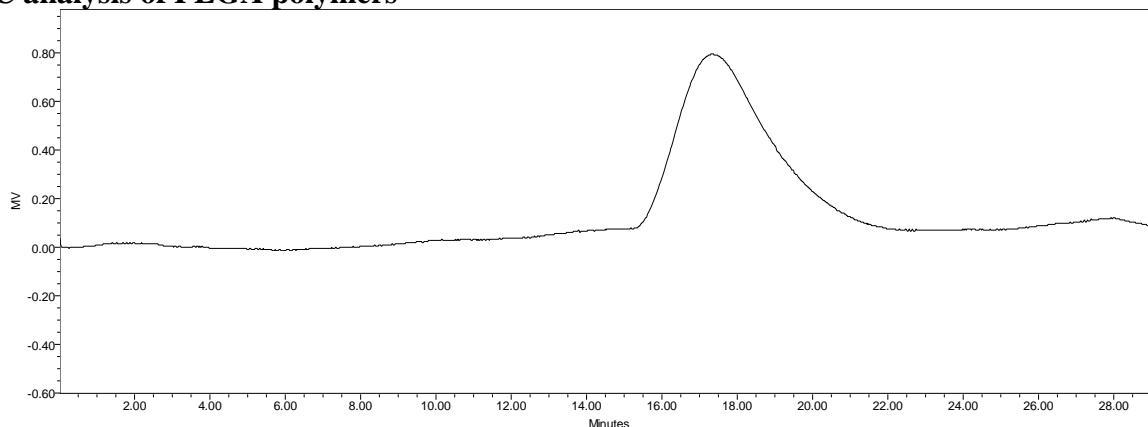


No. AP125 Certificate of Analysis

Product Name: Poly(lactide-co-glycolide) ester endcapped (Mn: 75,000-85,000 Da, LA:GA 75:25) (Lot#: 51008MJK)



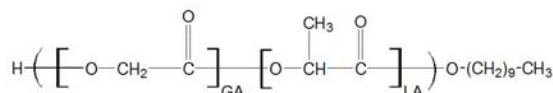
- GPC analysis of PLGA polymers**



Analysis Method: Waters Breeze 2 system with 1 ml/min DCM flow across two Phenogel 5 μ m columns and one PLgel Resipore column (Agilent). Detection via UV/Vis, calibrated against polystyrene standards.

Polymer	Mn (from GPC)	Mw (from GPC)	PDI
PLGA	75,743	106,263	1.40

- Structure of PLGA polymers**



Material provided for research use only. Not for human use.

PolySciTech Division of Akina, Inc. | 3495 Kent Avenue, West Lafayette, IN 47906
765-464-0390 | www.polysciotech.com

For research use only.