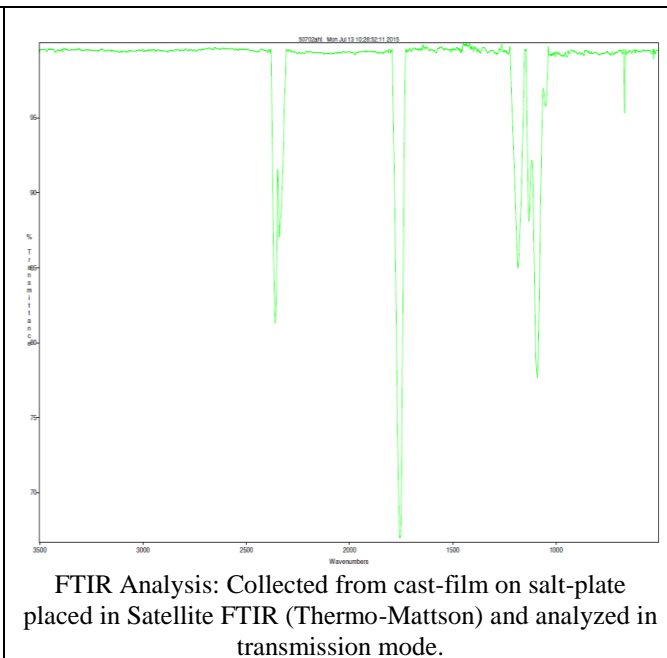
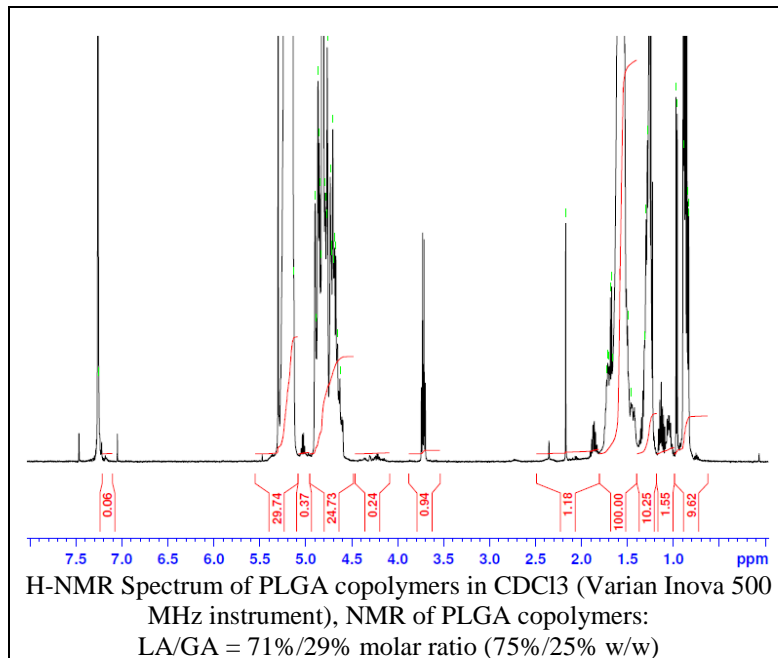
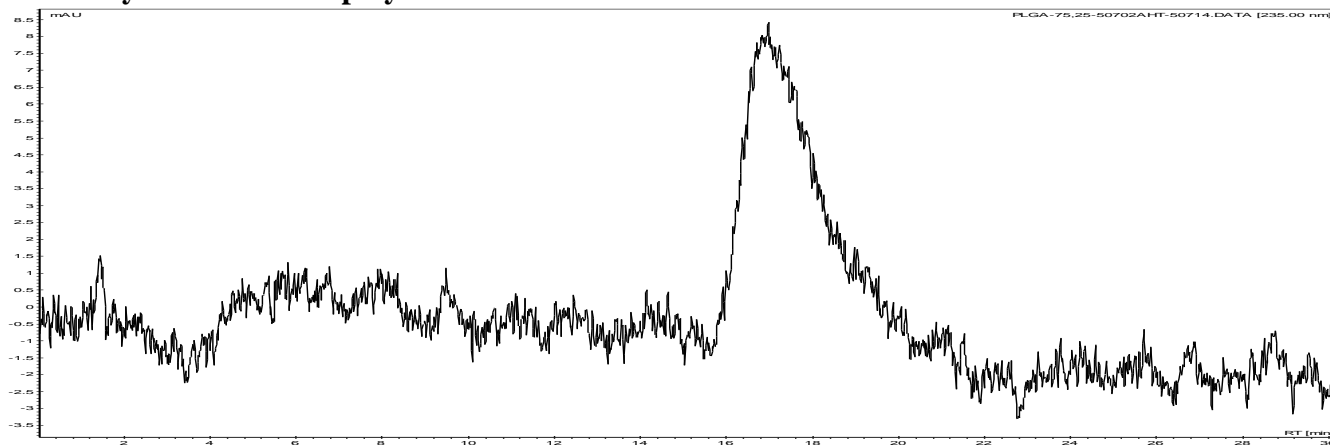


Product Name: Poly(lactic-co-glycolic) copolymers ester endcap (75:25 LA:GA, M_n : 75,000 - 85,000 Da) (Lot#: 50702AHT) REV:A



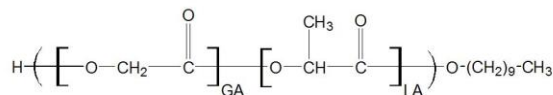
• GPC analysis of PLGA copolymers



Analysis Method: Varian Prostar system with 1 ml/min DCM flow across three Phenogel columns and one PLgel Resipore column (Agilent). Detection via UV/Vis, calibrated against polystyrene standards

Polymer	M_n (from GPC)	M_w (from GPC)	PDI
PLGA	84,494	119,313	1.41

• Structure of PLGA copolymers



Material provide for research use only. Not for human use.