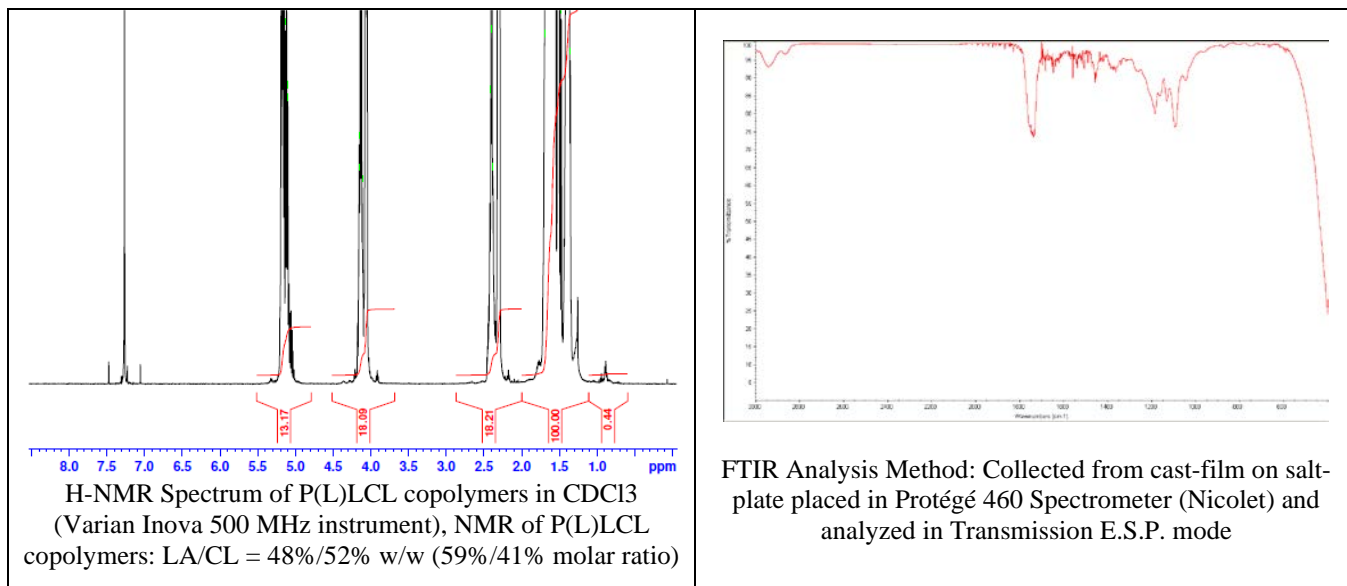


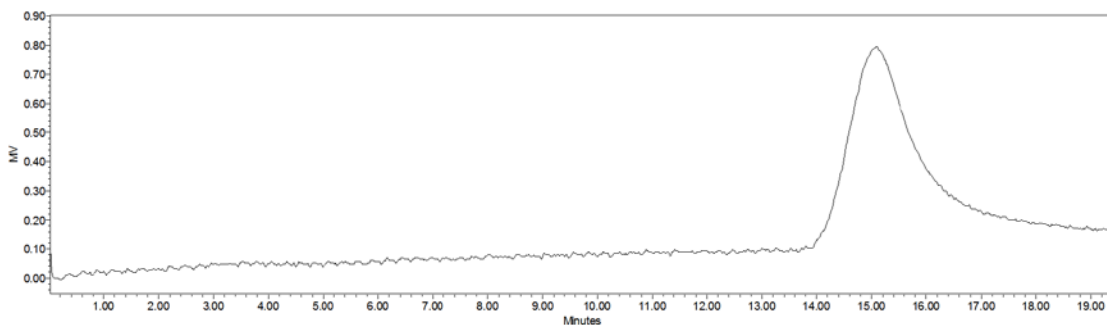
No. AP124

Certificate of Analysis

Product Name: Poly(L-lactide-co-caprolactone) copolymer ester end-capped (60:40 LA:CL m/m, M_n : 100,000-200,000 Da) (Lot#: 61017JSG-C)



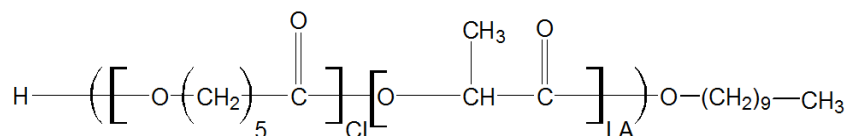
- **GPC analysis of P(L)LCL copolymers**



Analysis Method: Waters Breeze 2 system with 1 ml/min DCM flow across three GPC columns (7.8 x 300 mm, mixed porosities). Detection via refractive index, calibrated against polystyrene standards.

Polymer	M_n (from GPC)	M_w (from GPC)	PDI
P(L)LCL	104,429	124,272	1.19

- **Structure of P(L)LCL copolymers**



Material provided for research use only. Not for human use.