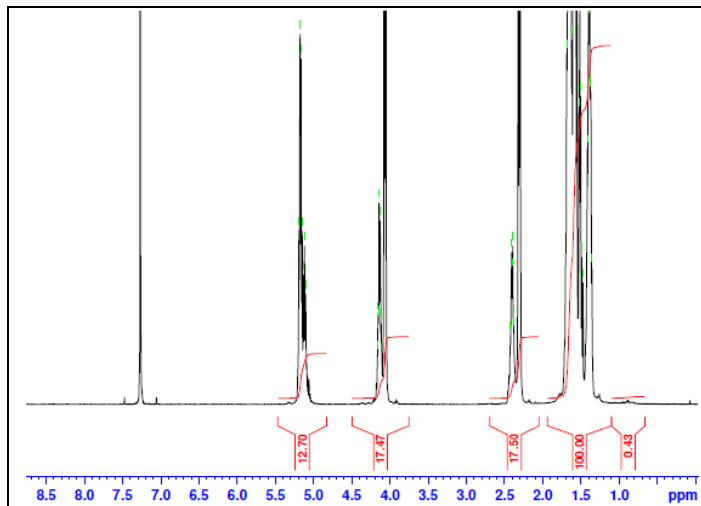


No. AP124

Certificate of Analysis

Product Name: Poly(L-lactide-co-caprolactone) Copolymer ester end-capped (60:40 LA:CL m/m, M_n : 100,000-200,000 Da) (Lot#: 61011ELH-A)

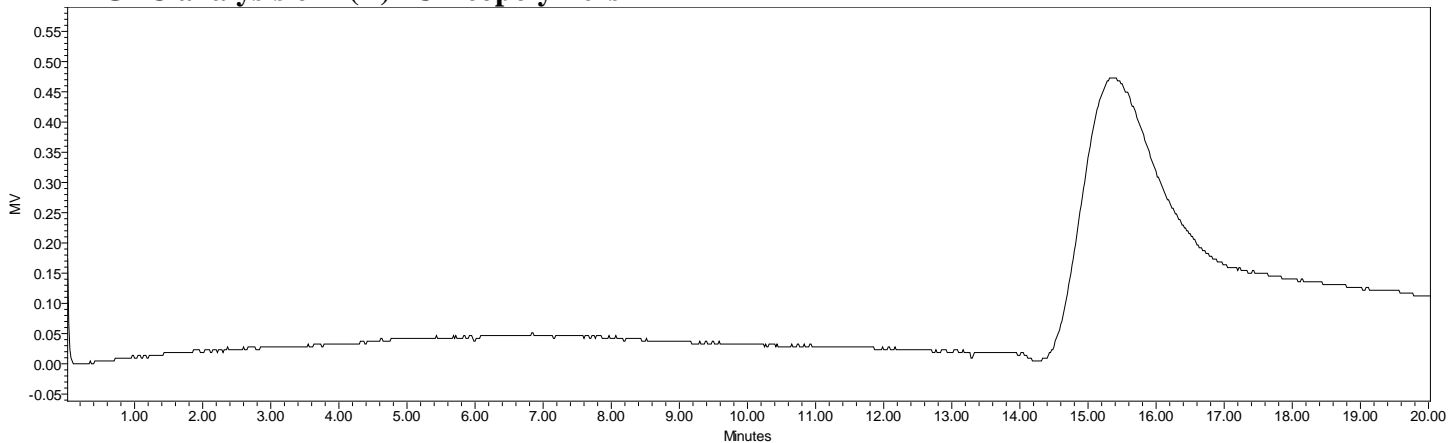


$^1\text{H-NMR}$ Spectrum of P(L)LCL copolymers in CDCl_3 (Varian Inova 500 MHz instrument), NMR of P(L)LCL copolymers: LA/CL = 48%/52% w/w (59%/41% molar ratio)



FTIR Analysis Method: Collected from cast-film on salt-plate placed in Protégé 460 Spectrometer (Nicolet) and analyzed in Transmission E.S.P. mode

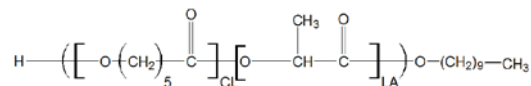
• GPC analysis of P(L)LCL copolymers



Analysis Method: Waters Breeze 2 system with 1 ml/min DCM flow across three GPC columns (7.6 x 300 mm, mixed porosities). Detection via refractive index, calibrated against polystyrene standards.

Polymer	M_n (from GPC)	M_w (from GPC)	PDI
P(L)LCL	105,496	117,670	1.12

• Structure of P(L)LCL copolymers



Material provided for research use only. Not for human use.