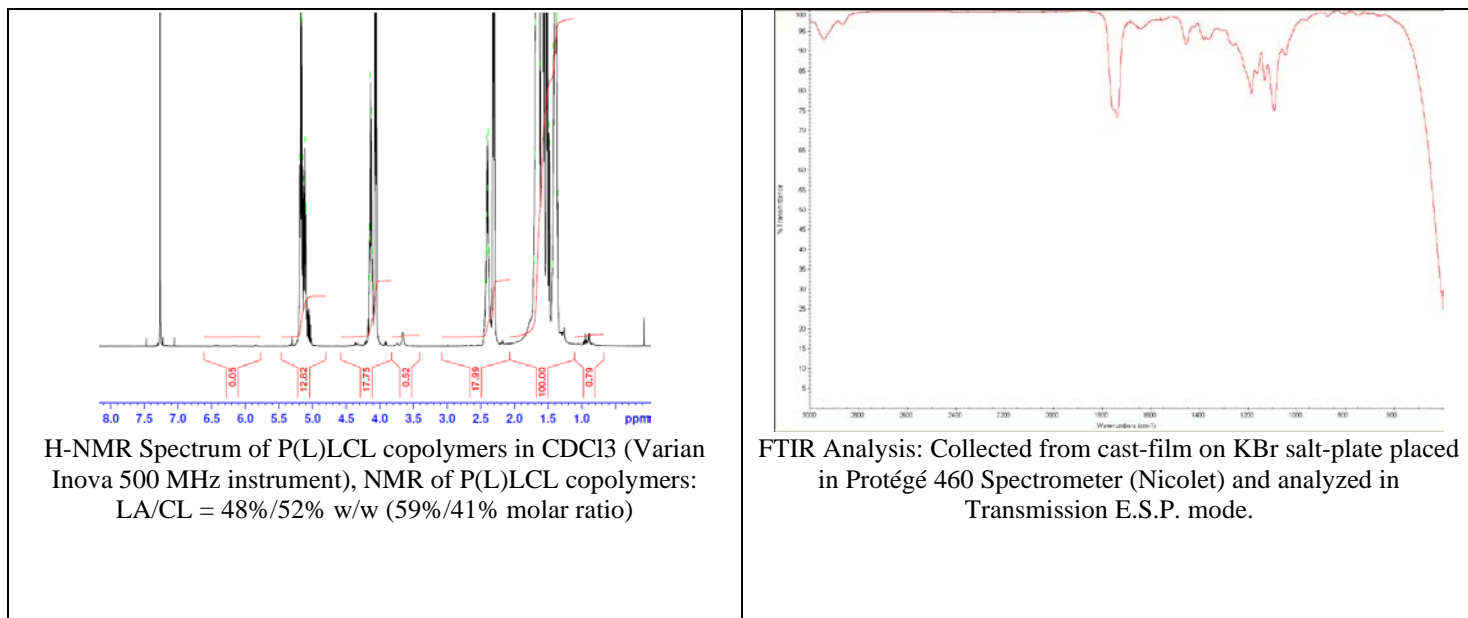


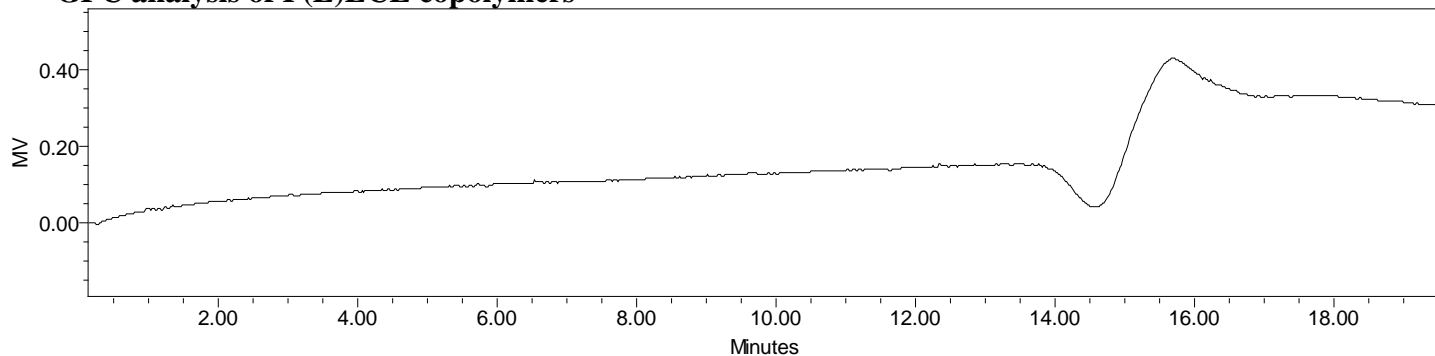
# No. AP124

# Certificate of Analysis

Product Name: Poly(L-lactide-co-caprolactone) Copolymer ester end-capped (60:40 LA:CL m/m,  $M_n$ : 100,000-200,000 Da) (Lot#: 60907ELH-B)



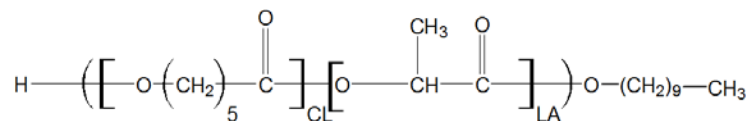
- **GPC analysis of P(L)LCL copolymers**



Analysis Method: Waters Breeze 2 system with 1 ml/min DCM flow across three GPC columns (7.6 x 300 mm, mixed porosities). Detection via refractive index, calibrated against polystyrene standards.

Polymer	$M_n$ (from GPC)	$M_w$ (from GPC)	PDI
P(L)LCL	108,777	114,397	1.05

- **Structure of P(L)LCL copolymers**



Material provided for research use only. Not for human use.