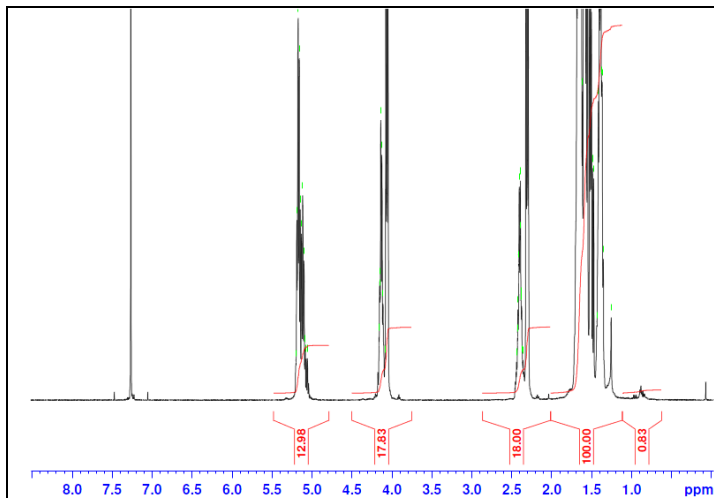


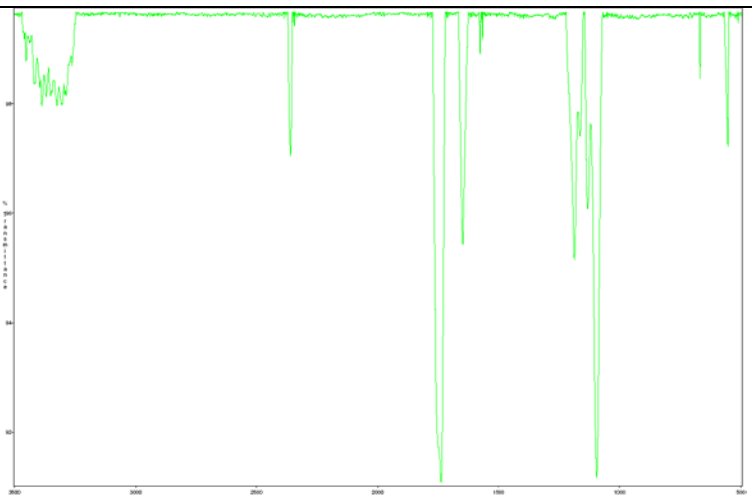
# No. AP124

# Certificate of Analysis

Product Name: Poly(L-lactide-co-caprolactone) Copolymer ester end-capped (60:40 LA:CL m/m,  $M_n$ : 100,000-200,000 Da) (Lot#: 60629EJF-A)

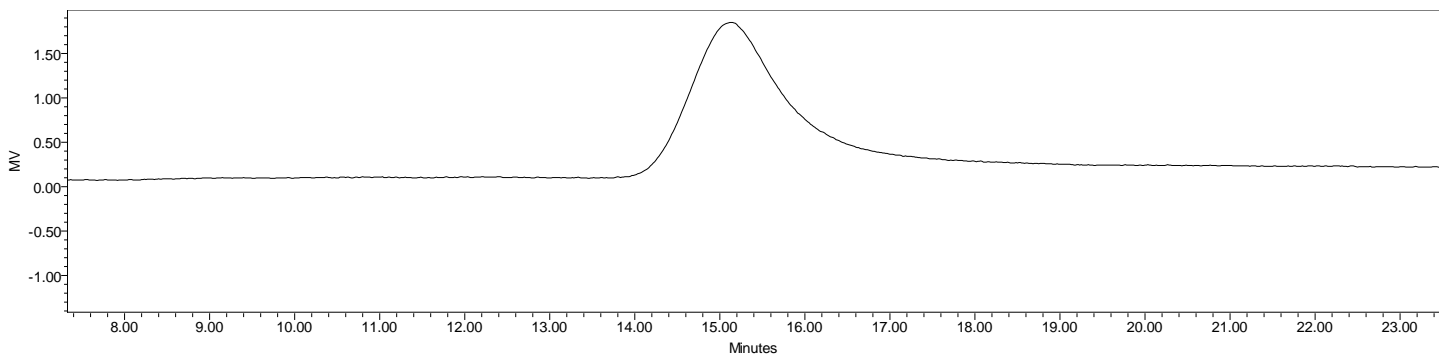


H-NMR Spectrum of P(L)LCL copolymers in CDCl<sub>3</sub> (Varian Inova 500 MHz instrument), NMR of P(L)LCL copolymers: LA/CL = 48%/52% w/w (59%/41% molar ratio)



FTIR Analysis: Collected from cast-film on KBr salt-plate placed in Satellite FTIR (Thermo-Mattson) and analyzed in transmission mode.

## • GPC analysis of P(L)LCL copolymers



Analysis Method: Varian Prostar system with 1 ml/min DCM flow across two Phenogel 5  $\mu$ m columns and one PLgel Resipore column (Agilent). Detection via UV/Vis, calibrated against polystyrene standards.

Polymer	$M_n$ (from GPC)	$M_w$ (from GPC)	PDI
P(L)LCL	120,813	151,915	1.26

## • Structure of P(L)LCL copolymers

