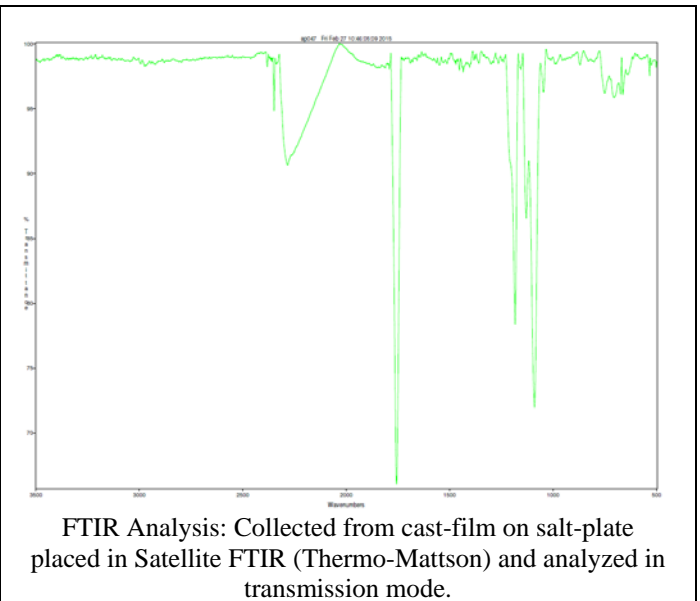
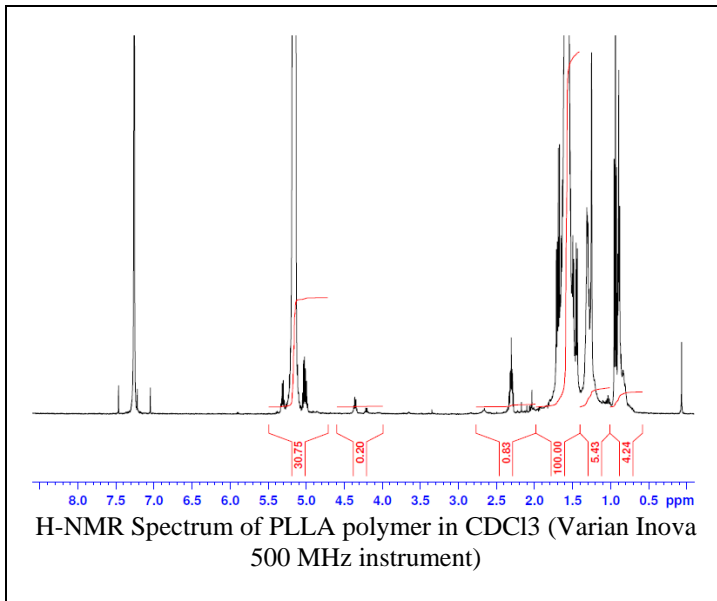
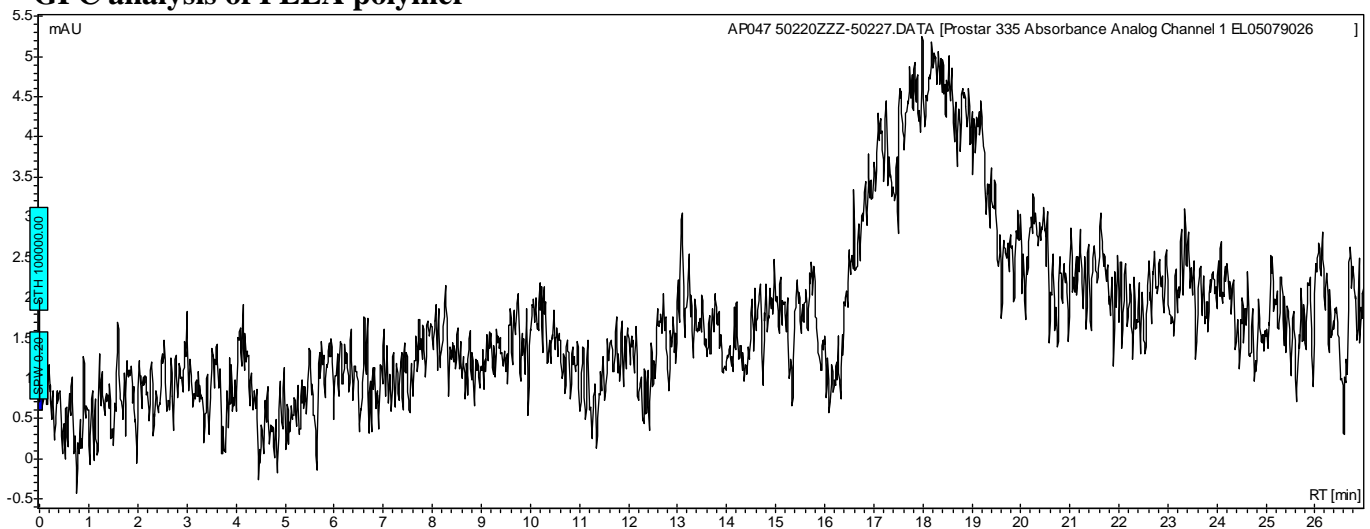


No. AP123 Certificate of Analysis

Product Name: Poly((L)Lactic acid) acid endcap (M_N: 75,000-85,000 Da) (Lot#: 50220ZZZ)



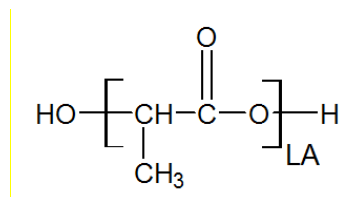
- GPC analysis of PLLA polymer**



Analysis Method: Varian Prostar system with 1 ml/min DCM flow across two 5 μm Phenogel columns and one PLGel Resipore column (Agilent). Detection via UV/Vis, calibrated against polystyrene standards.

Polymer	M _n (from GPC)	M _w (from GPC)	PDI
PLLA	80,219	115,968	1.45

- Structure of PLLA polymer**



Material provided for research use only. Not for human use.

PolySciTech Division of Akina, Inc. | 3495 Kent Avenue, West Lafayette, IN 47906

765-464-0390 | www.polysciotech.com

For research use only.