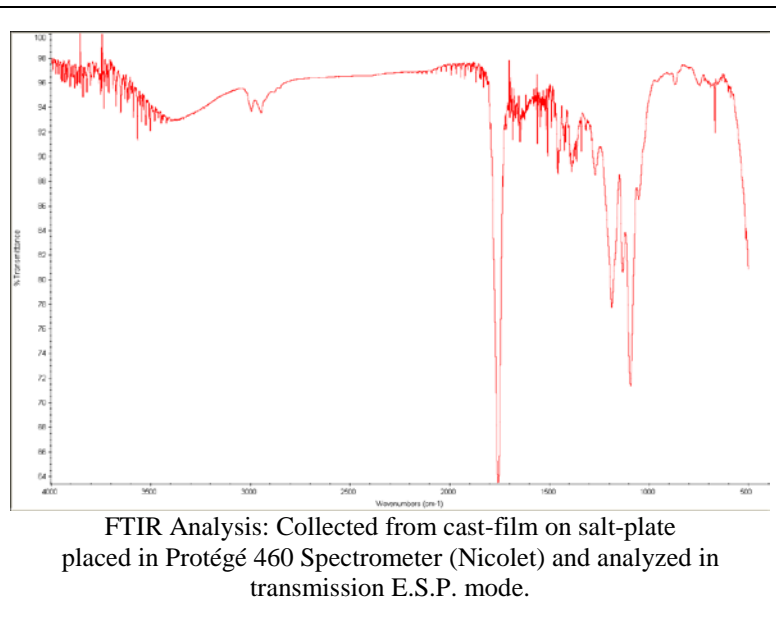
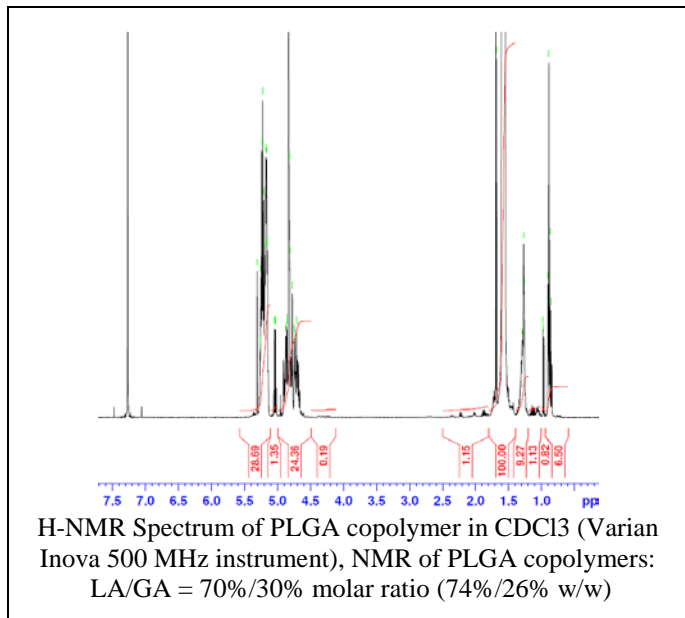
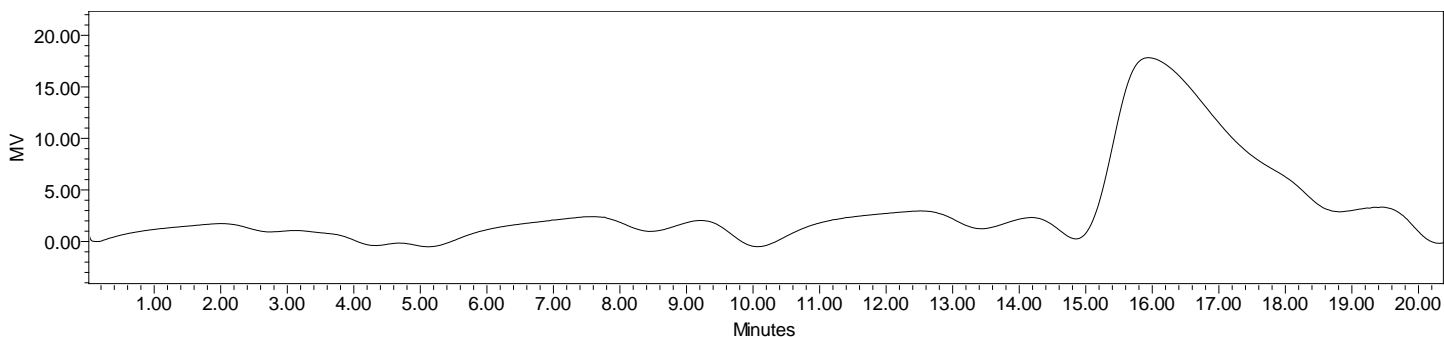


Product Name: Poly(lactic-co-glycolic acid) acid end-capped (75:25 LA:GA, M_n : 75,000-85,000 Da) (Lot#: 70214FAJ-A)



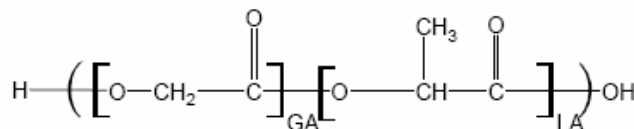
• GPC of PLGA copolymers



Analysis Method: Waters Breeze 2 system with 1 ml/min THF flow across three GPC columns. Detection via refractive index, calibrated against polystyrene standards.

Polymer	M_n (from GPC)	M_w (from GPC)	PDI
PLGA	75,170	89,629	1.19

• Structure of PLGA copolymers



Material provided for research use only. Not for human use.