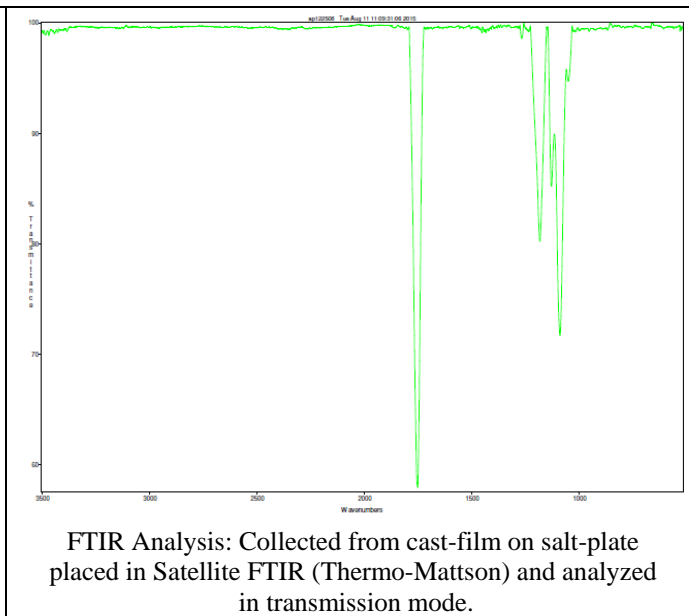
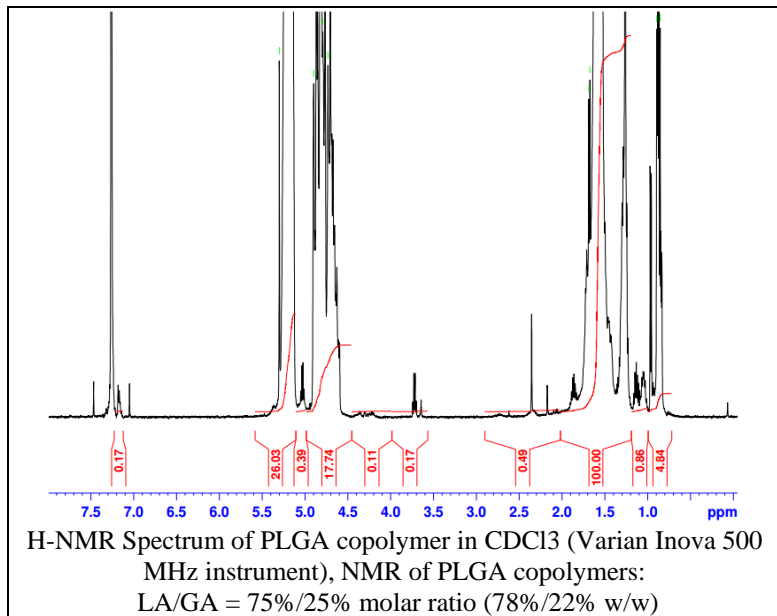


No. AP122

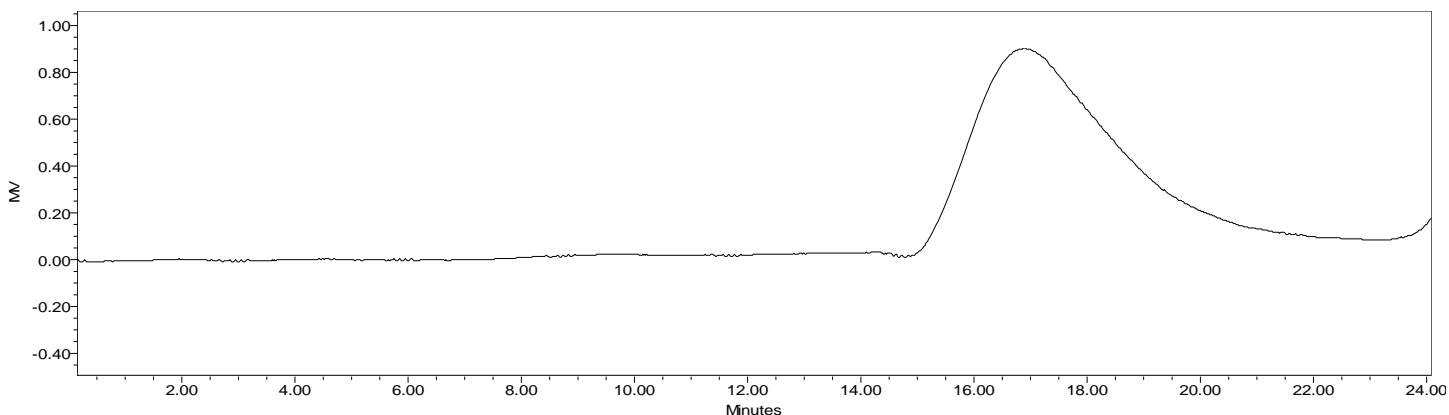
Certificate of Analysis



Product Name: Poly(lactic-co-glycolic acid) acid end-capped (75:25 LA:GA, M_n : 75,000-85,000 Da) (Lot#: 50803MLS)



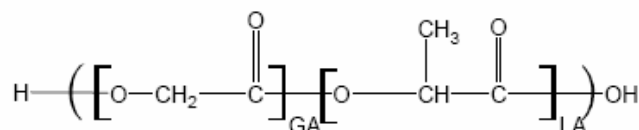
• GPC of PLGA copolymers



Analysis Method: Waters Breeze 2 system with 1 ml/min DCM flow across three Phenogel 5um columns (Phenomenex). Detection via refractive index, calibrated against polystyrene standards.

Polymer	M_n (from GPC)	M_w (from GPC)	PDI
PLGA	75,113	103,898	1.38

• Structure of PLGA copolymers



Material provided for research use only. Not for human use.