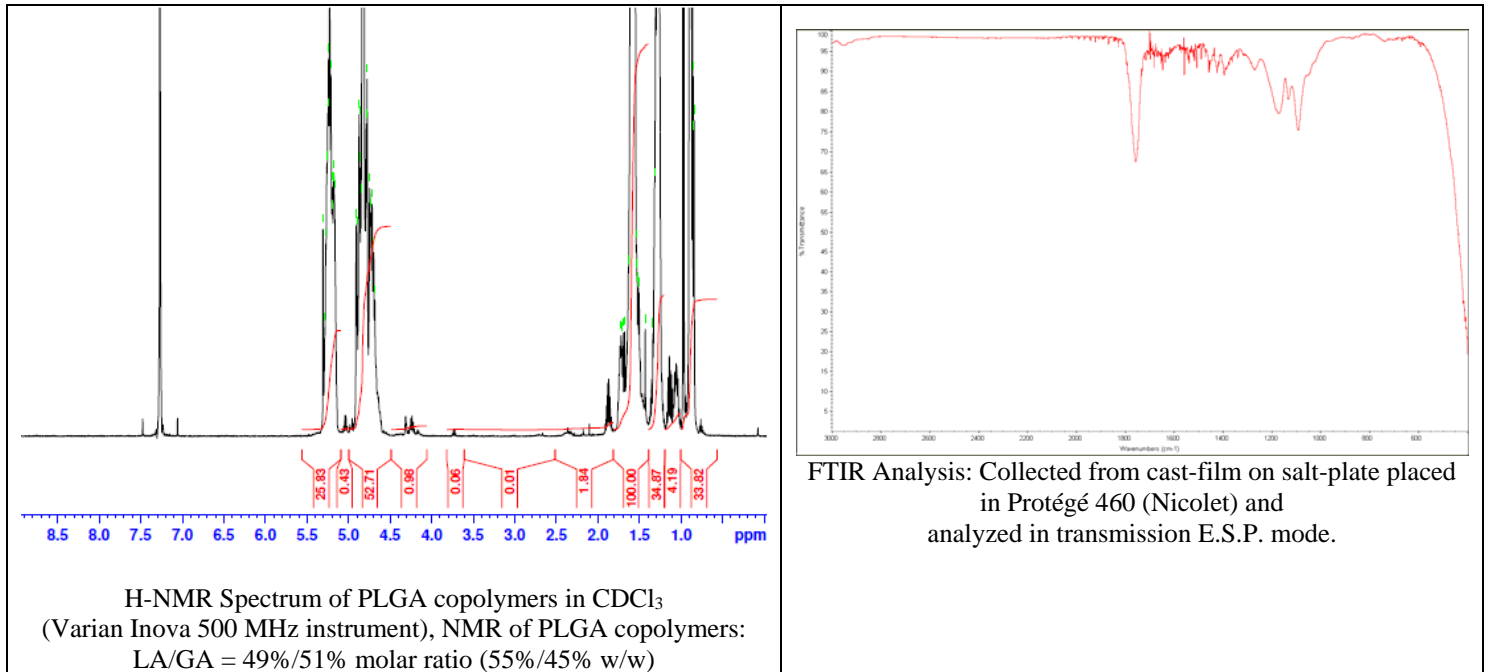


No. AP121

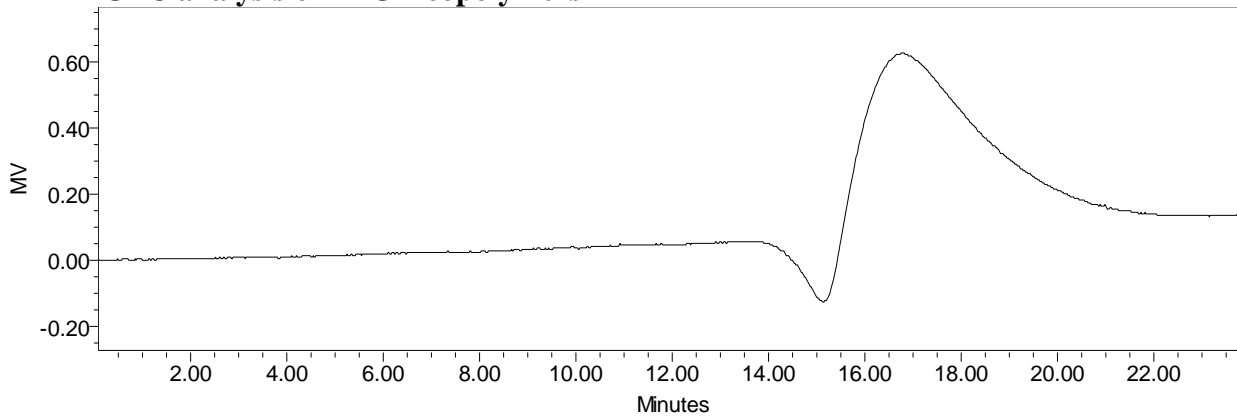
Certificate of Analysis

Product Name: Poly(lactic-co-glycolic acid) ester endcapped (50:50 LA:GA)

(M_n: 45,000-55,000Da) (Lot#: 60928ELH-A)



• GPC analysis of PLGA copolymers



Analysis Method: Waters Breeze 2 system with 1 ml/min DCM flow across three GPC columns (7.6 x 300 mm, mixed porosities). Detection via refractive index, calibrated against polystyrene standards.

Polymer	M _n (from GPC)	M _w (from GPC)	PDI
PLGA	46,403	59,109	1.27

• Structure of PLGA copolymers

