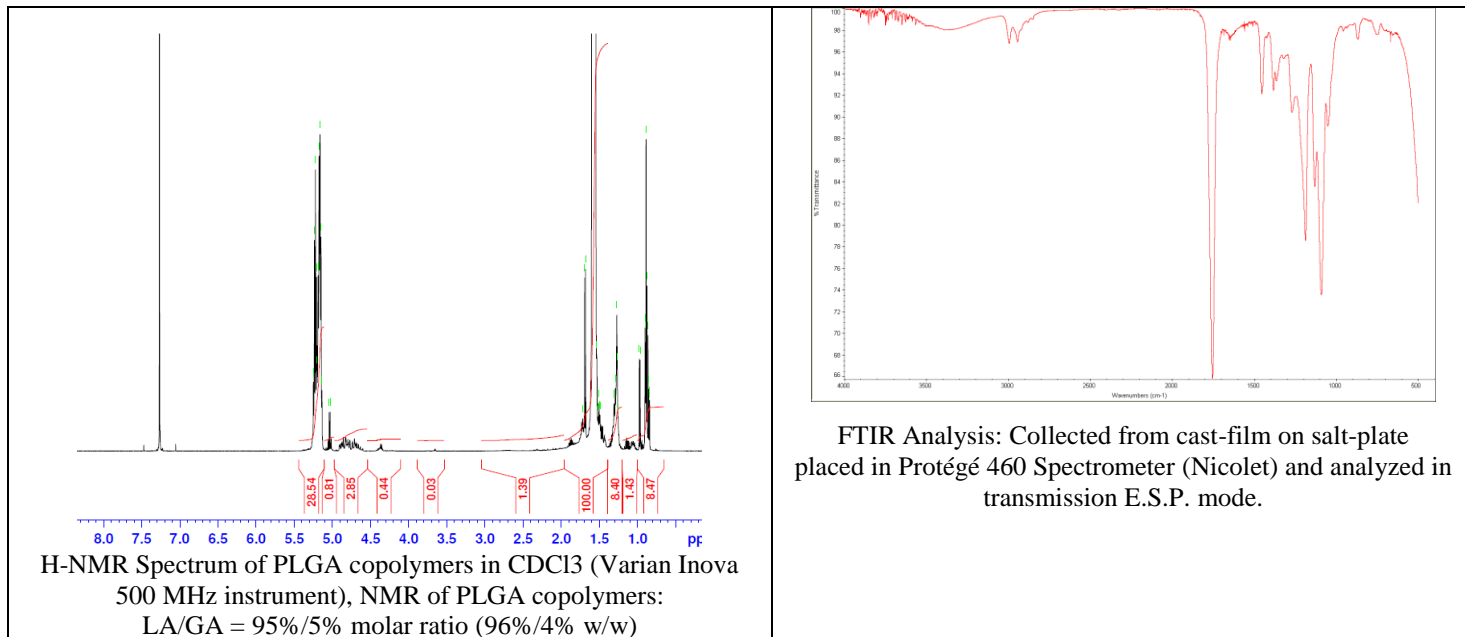


No. AP120

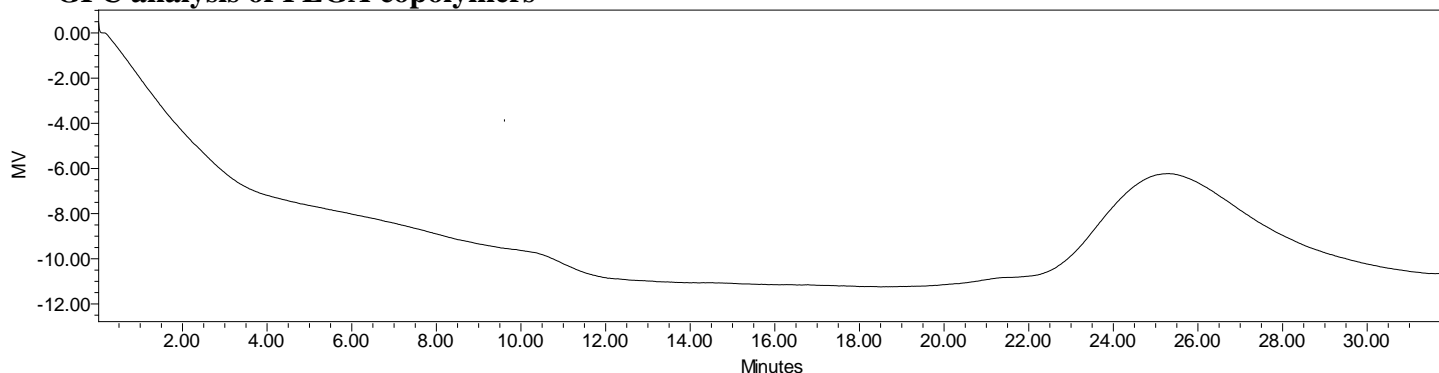
Certificate of Analysis



Product Name: Poly(lactide-co-glycolide) acid endcap (95:5 LA:GA, Mn: 10,000-15,000Da)
(Lot#: 70328ELH-B)



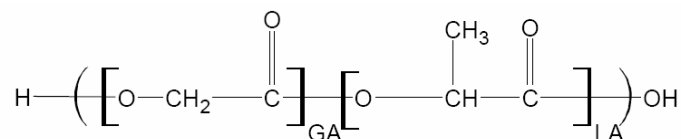
• GPC analysis of PLGA copolymers



Analysis Method: Waters Breeze 2 system with 1 ml/min THF flow across four GPC columns (mixed porosity). Detection via refractive index, calibrated against polystyrene standards.

Polymer	Mn (from GPC)	Mw (from GPC)	PDI
PLGA	12,127	24,633	2.03

• Structure of PLGA copolymers



Material provided for research use only. Not for human use.

PolySciTech Division of Akina, Inc. | 3495 Kent Avenue, West Lafayette, IN 47906
765-464-0390 | www.polysciotech.com

For research use only.