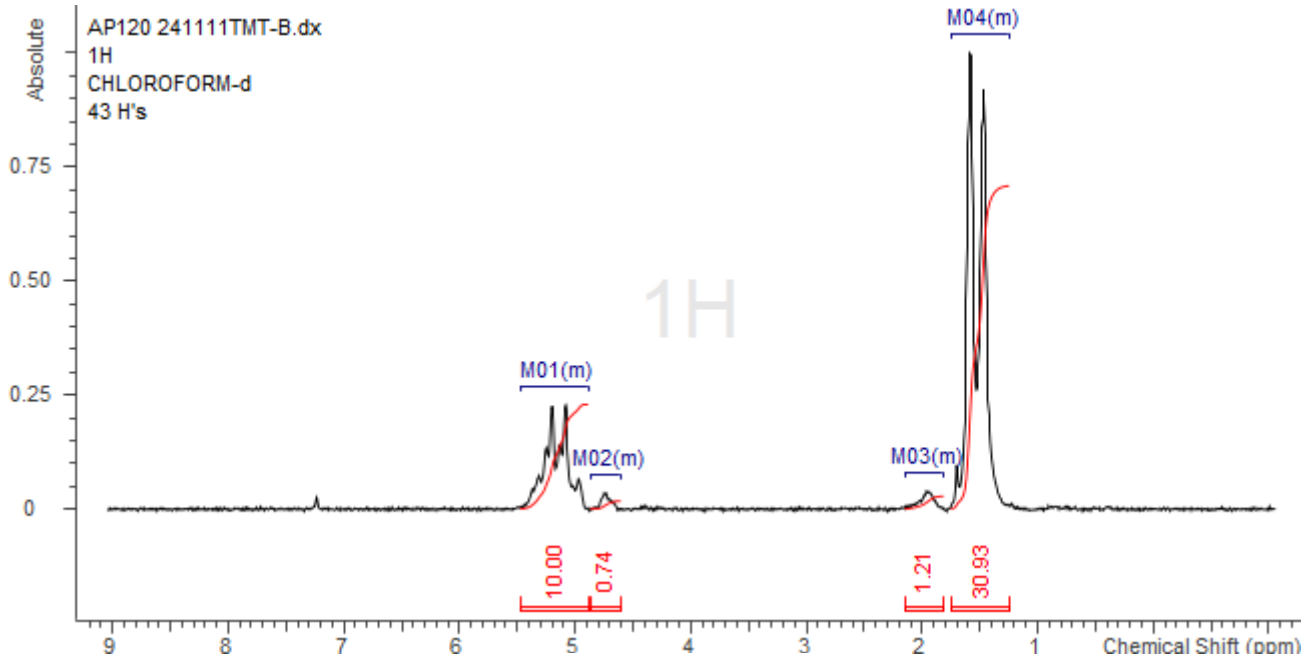


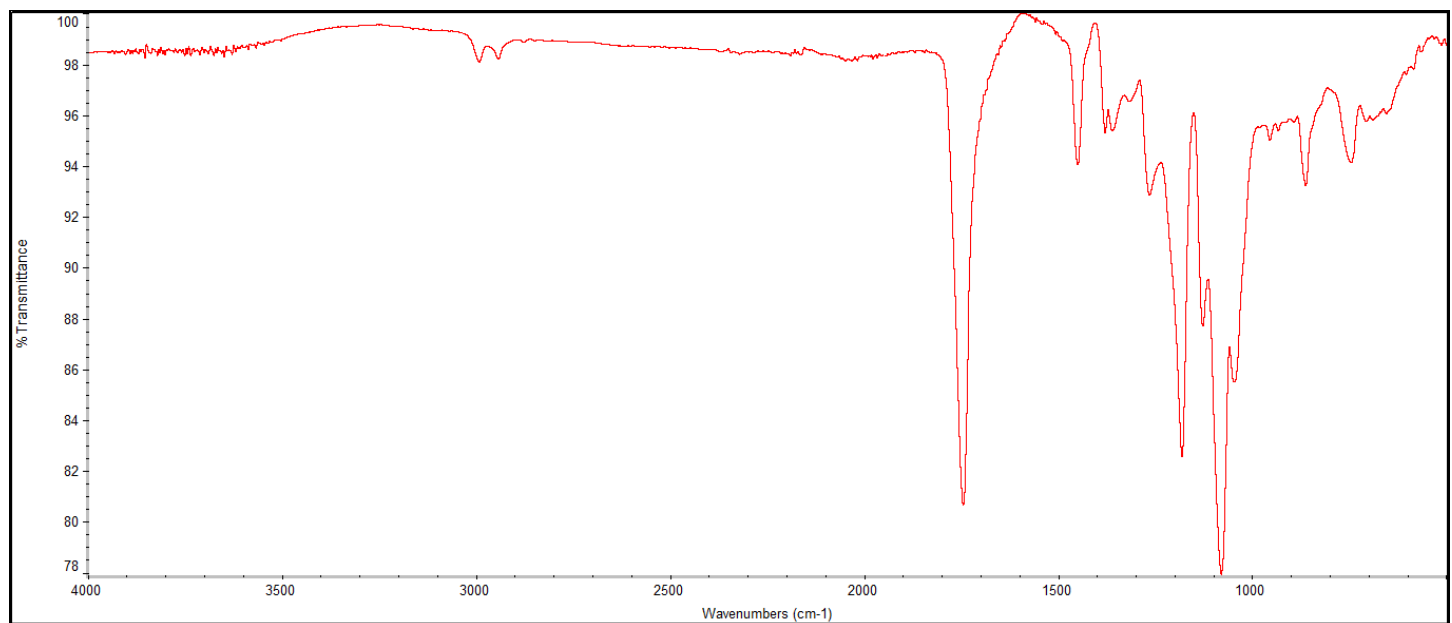
Product Name: Poly(lactide-co-glycolide) acid endcap (95:5 LA:GA, Mn: 10,000-15,000 Da)  
(Lot#: 241111TMT-B)

## H-NMR



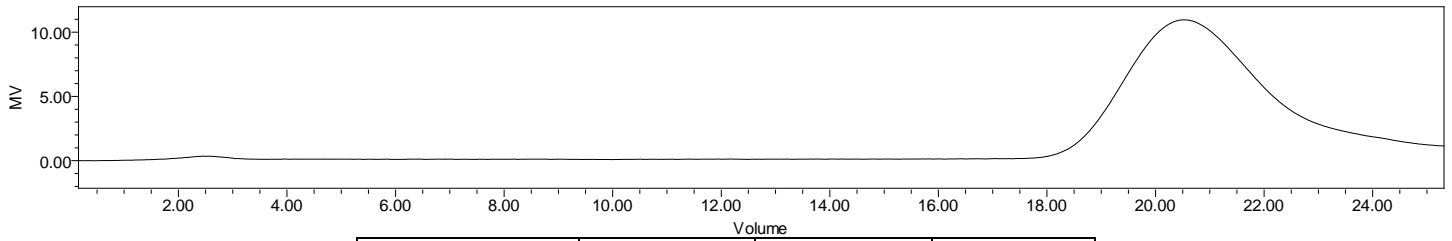
H-NMR Spectrum of copolymers in CDCl<sub>3</sub> (NMReady-60e, Nanalysis 60 MHz) NMR of PLGA copolymer: LA-GA =96%:4% molar ratio (LA:GA 97%:3% w:w)

## FTIR



FTIR Analysis: Collected from IS5 ID7-ATR spectrometer (Thermo Scientific) and analyzed in transmission mode.

## GPC-ES



Polymer	M <sub>n</sub> (from GPC)	M <sub>w</sub> (from GPC)	PDI
PLGA	12,789	19,957	1.56

**GPC-ES Analysis Method:** Waters Breeze 2 system with 1 ml/min THF flow across three GPC columns. Detection via refractive index, calibrated against polystyrene standards.

## DSC

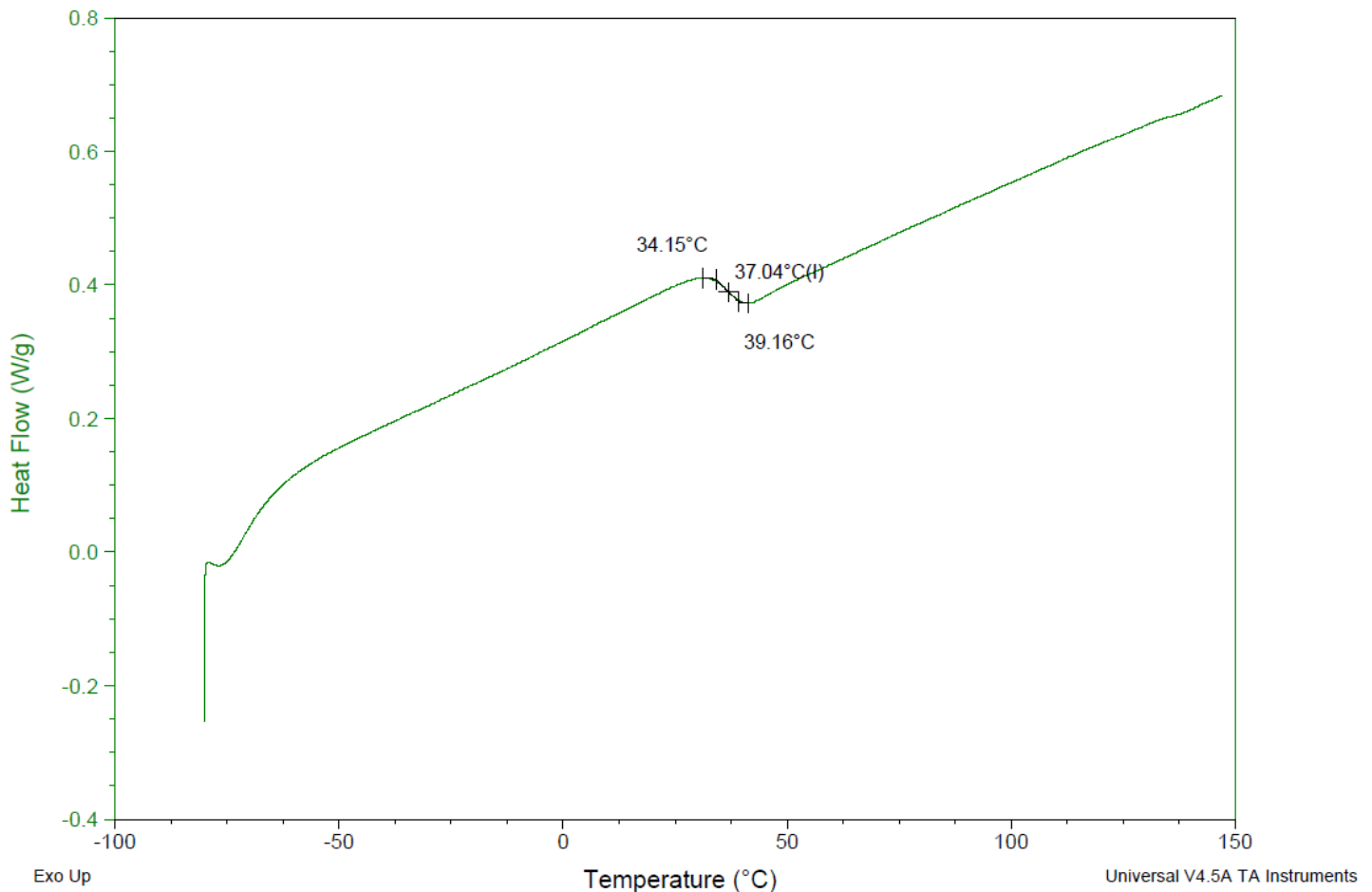
Sample: AP120 241111TMT-B  
Size: 3.9000 mg  
Method: Glass Transition-simple

### DSC

File: \\...COA\AP120 241111TMT-B DSC.001

Run Date: 14-Nov-2024 09:57

Instrument: DSC Q2000 V24.11 Build 124

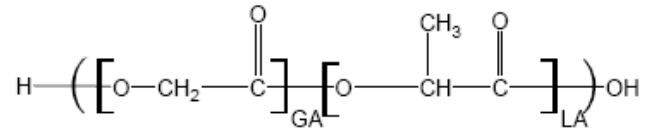


**DSC Testing:** 1-5 mg sample tested in crimped aluminum pan on a TA Instruments Model Q2000 with procedure equilibraion 100 °C, isothermal 5 minutes, equilibrate -80 °C, data on, ramp 10 °C/min to 150 °C. T<sub>g</sub> = 37.04 °C

## IV

**Inherent Viscosity:** 0.133 dL/g (calculated from kinematic viscosity at 2% w/v Acetone on Rheosense microVISC, n=3) at 25°C.

### Structure of copolymers



Approved By:  
*Amie Tyler*  
Quality Manager