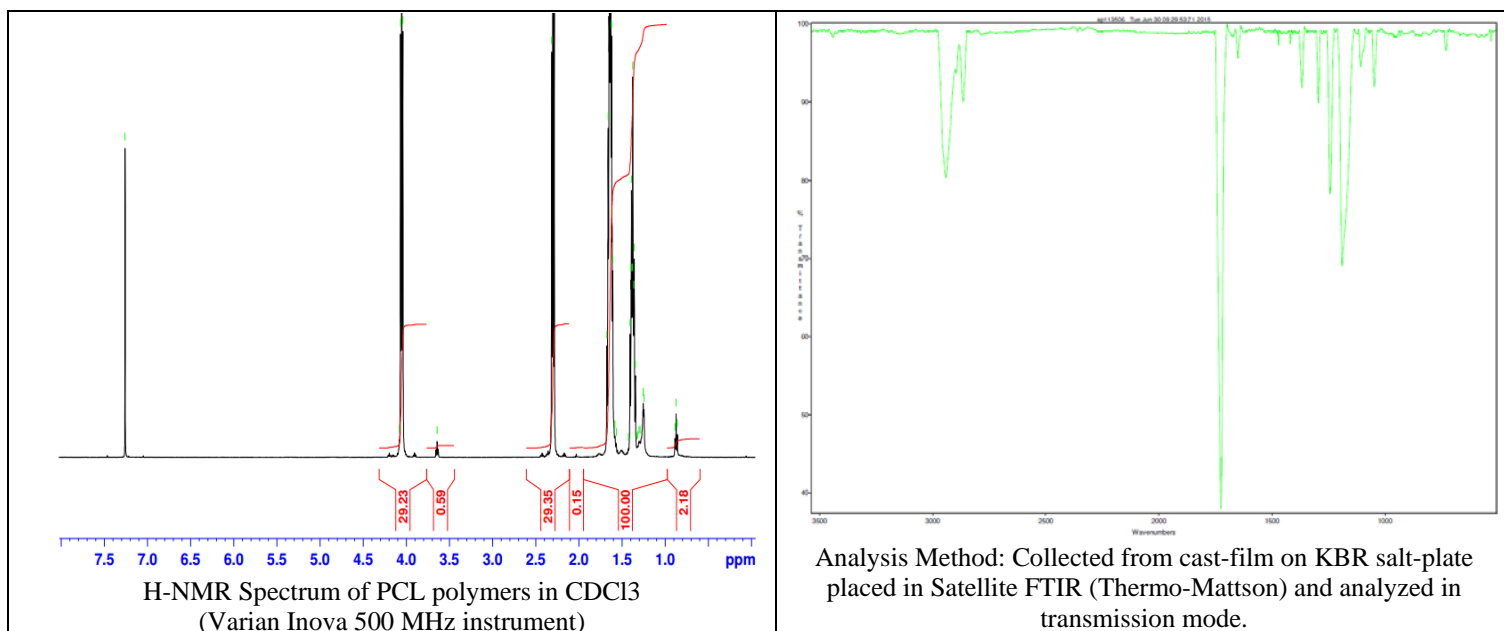
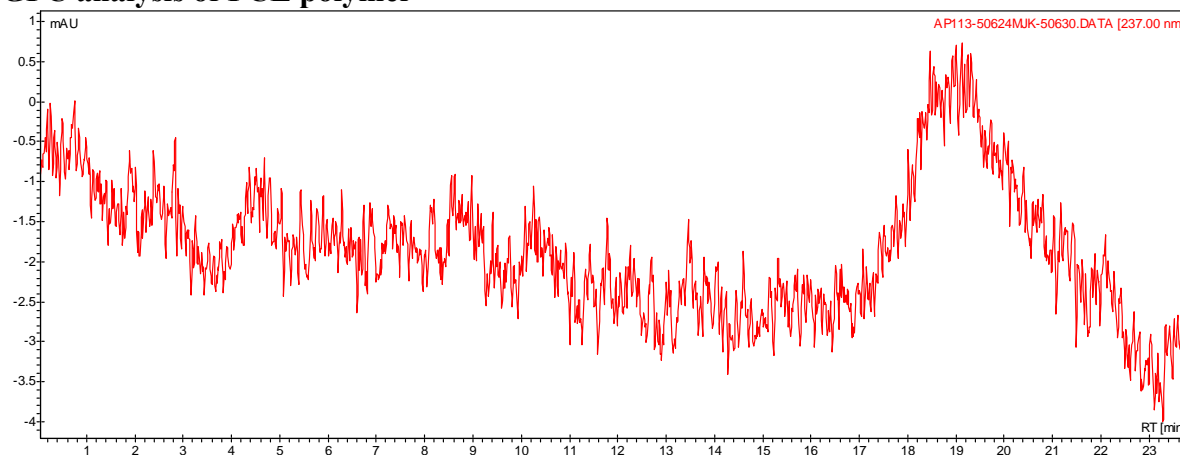


No. AP113 Certificate of Analysis

Product Name: Poly(caprolactone)-ester endcap polymer (M_n : 10,000-15,000 Da)
(Lot#: 50624MJK)



• GPC analysis of PCL polymer



Analysis Method: Varian Prostar system with 1 ml/min DCM flow across two Phenogel 5u columns and one Resipore column (Agilent). Detection via UV/Vis, calibrated against polystyrene standards

Polymer	M_n (from GPC)	M_w (from GPC)	PDI
PCL	14,917	29,178	1.96

• Structure of PCL polymer

