

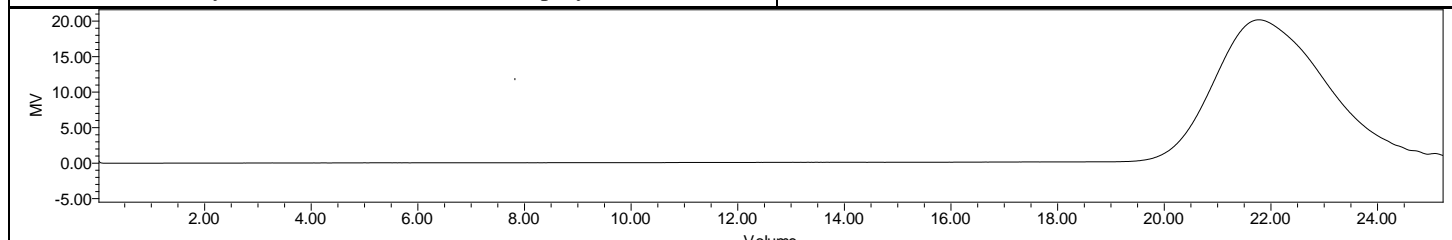
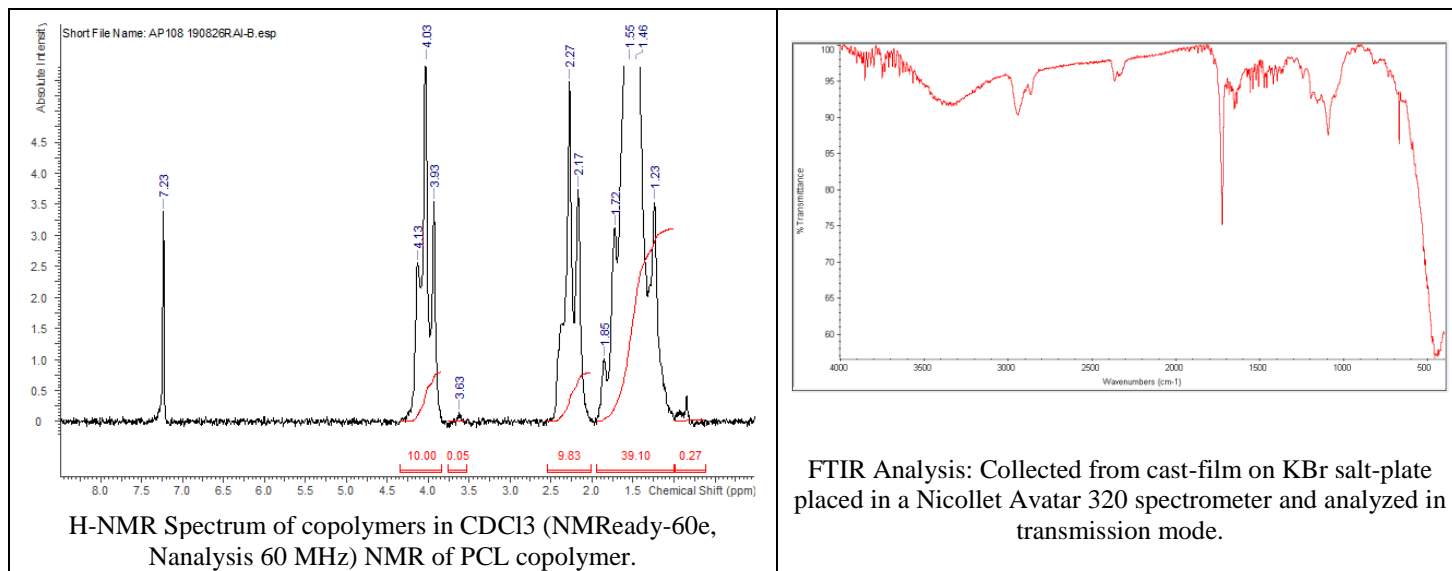
AP108

Certificate of Analysis



Product Name: Poly(caprolactone)-ester endcap polymer

(M_n : 1,000-5,000 Da) (Lot#: 190826RAI-B)



GPC Analysis Method: Waters Breeze 2 system with 1 ml/min THF flow across three GPC columns. Detection via refractive index, calibrated against polystyrene standards.

| Polymer | M_n (from GPC) | M_w (from GPC) | PDI |
|---------|------------------|------------------|------|
| PCL | 4827 | 6906 | 1.43 |

- Structure of PCL

