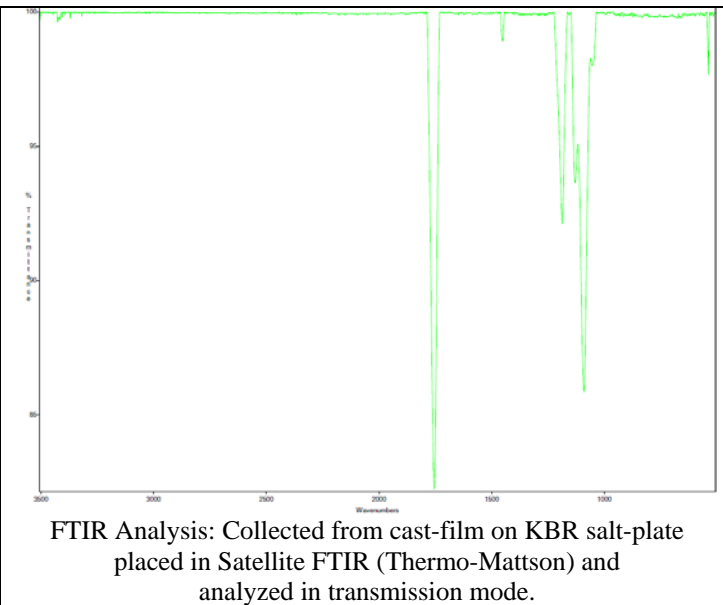
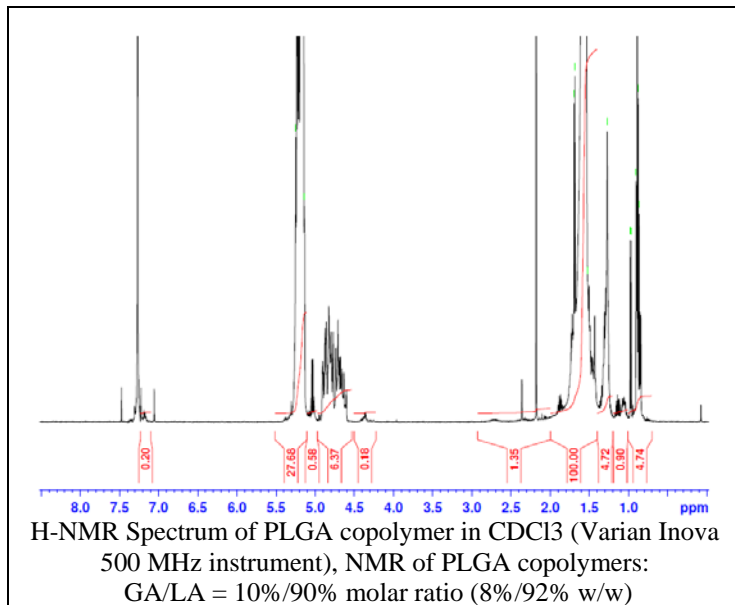
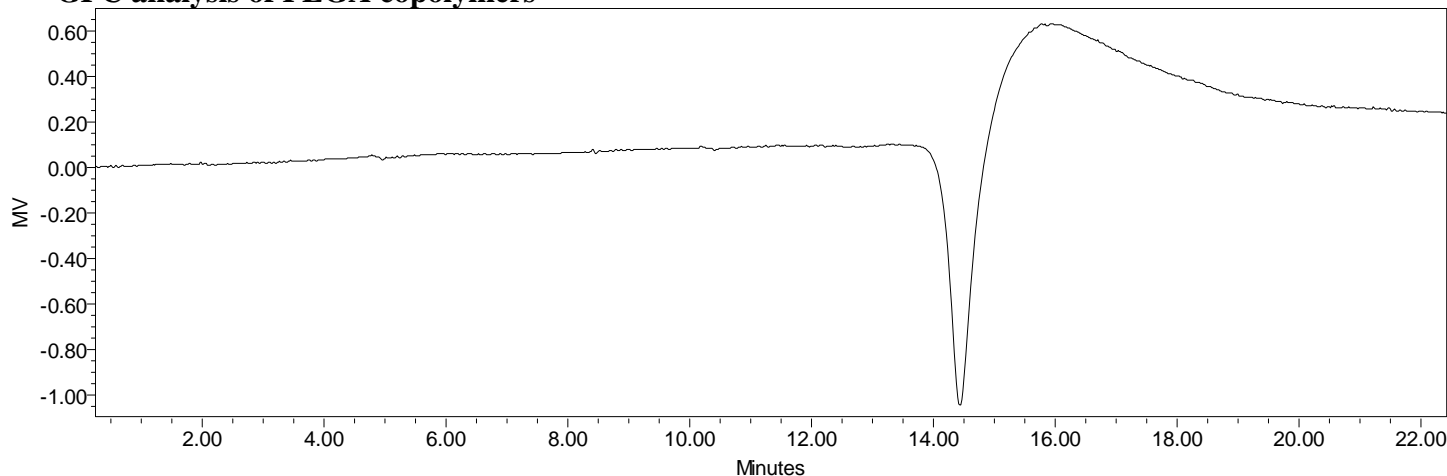


Product Name: Poly(lactide-co-glycolide) acid endcap (90:10 LA:GA) (M_n : 15,000-25,000 Da)
 (Lot#: 60520EJF-A)



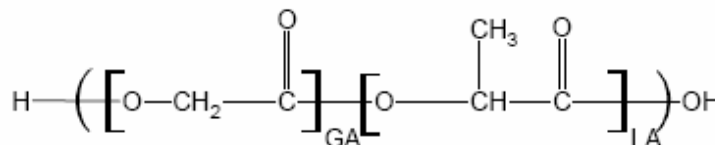
• GPC analysis of PLGA copolymers



Analysis Method: Waters Breeze system with 1 ml/min DCM flow across three Phenogel 5 μ m columns (Agilent). Detection via refractory index, calibrated against polystyrene standards (*PEG standards).

Polymer	M_n (from GPC)	M_w (from GPC)	PDI
PLGA	19,538	41,857	2.14

• Structure of PLGA copolymers



Material provided for research use only. Not for human use.