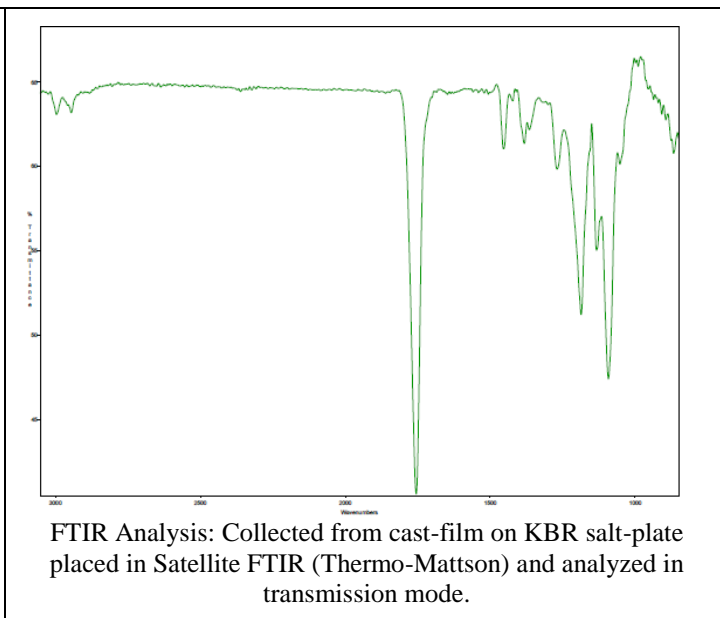
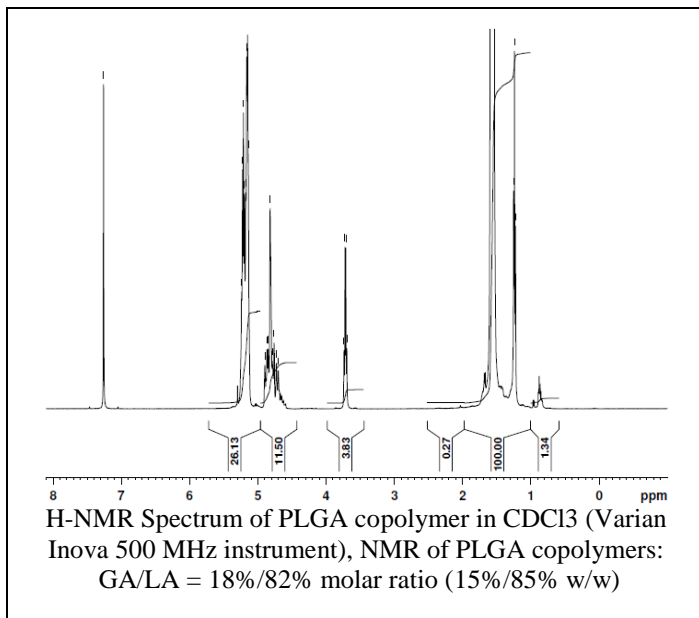
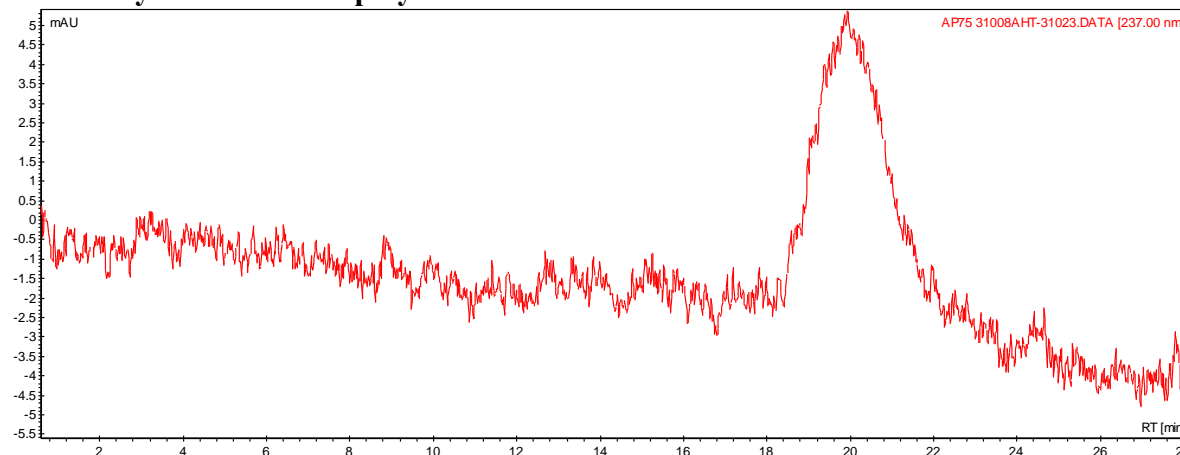


Product Name: Poly(lactic-co-glycolic acid) Ester endcap (85:15 LA:GA, Mn: 85,000-100,000Da) (Lot#: 31008AHT) REV:A



• GPC analysis of PLGA copolymers



Analysis Method: Varian Prostar system with 1 ml/min DCM flow across two Phenogel 5u columns and one PLgel Resipore column (Agilent). Detection via UV/Vis, calibrated against polystyrene standards

Polymer	Mn (from GPC)	Mw (from GPC)	PDI
PLGA	85,946	110,413	1.28

• Structure of PLGA copolymers

