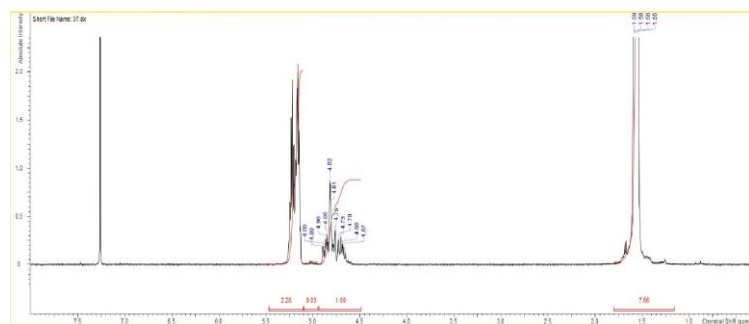


# No. AP101

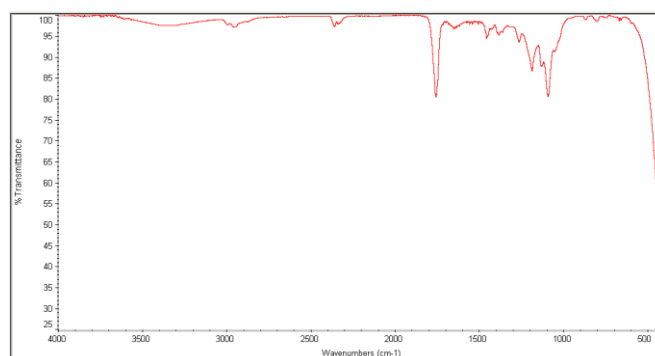
# Certificate of Analysis



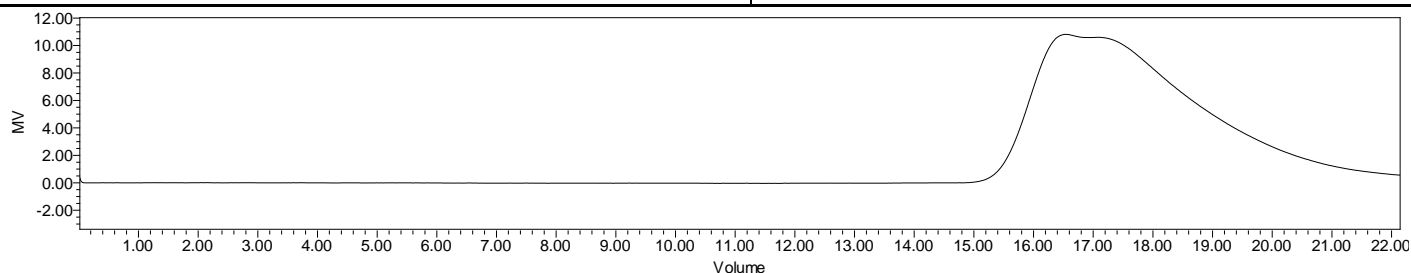
Product Name: Poly(lactide-co-glycolide) ester endcap (85:15 LA:GA,  
Mn: 85,000-100,000Da) (Lot#: 180815NAE-B)



H-NMR Spectrum of copolymers in CDCl<sub>3</sub> (Varian Inova 500 MHz instrument) NMR of PLGA copolymer: LA-GA = 82%-18% molar ratio (85%-15% w-w)



FTIR Analysis: Collected from cast-film on KBr salt-plate placed in Nicolet Avatar 320 spectrometer and analyzed in transmission mode.



GPC Analysis Method: Waters Breeze 2 system with 1 ml/min THF flow across three GPC columns. Detection via refractive index, calibrated against polystyrene standards.

Polymer	M <sub>n</sub> (from GPC)	M <sub>w</sub> (from GPC)	PDI
PLGA	89,915	205,335	2.28

## • Structure of PLGA copolymers

