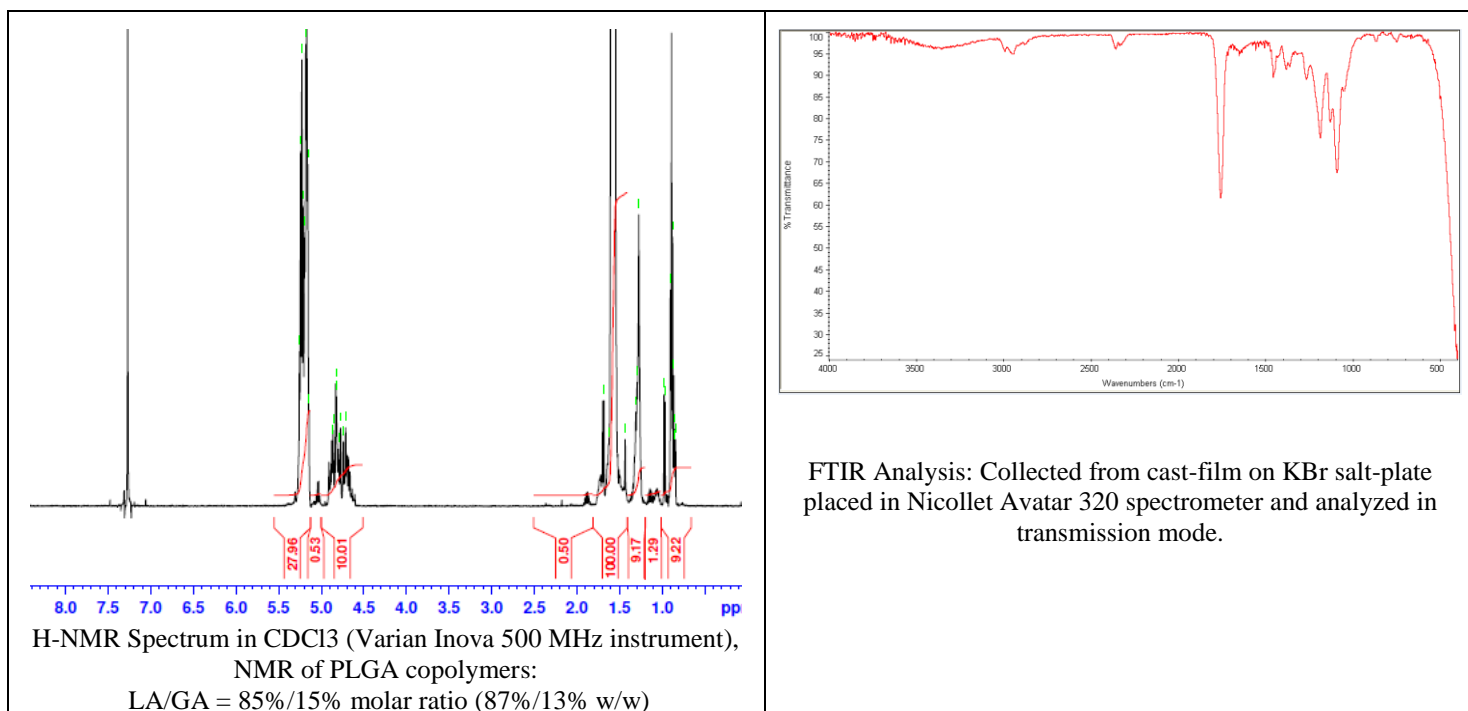
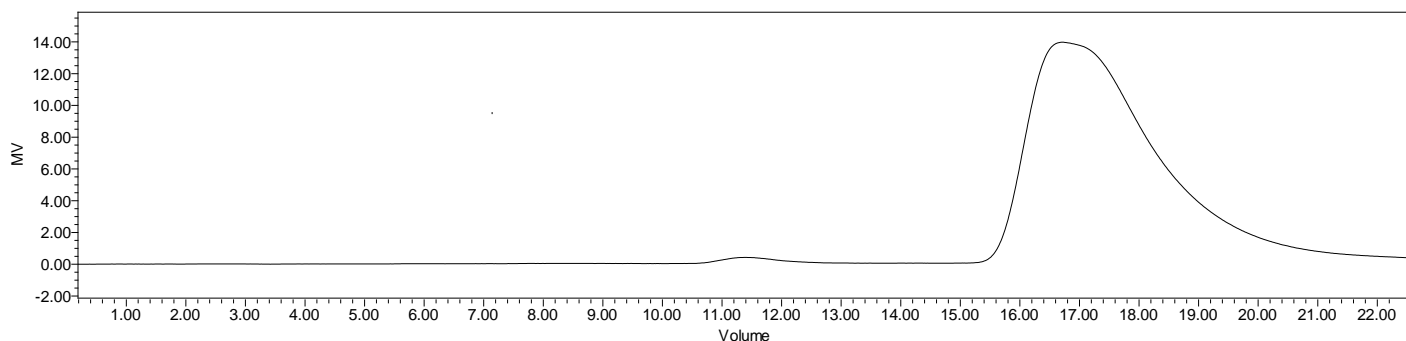


No. AP101 Certificate of Analysis

Product Name: Poly(lactide-co-glycolide) ester endcap (85:15 LA:GA, Mn: 85,000-100,000Da)
(Lot#: 180727AHT-A)



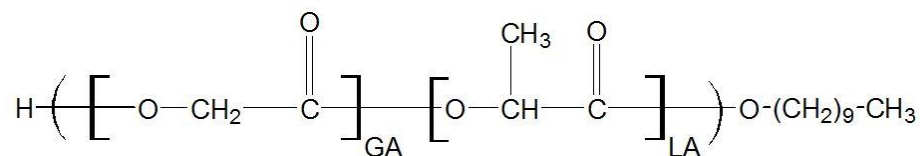
- GPC analysis of PLGA copolymers**



GPC Analysis Method: Waters Breeze 2 system with 1 ml/min THF flow across three GPC columns. Detection via refractive index, calibrated against polystyrene standards.

Polymer	Mn (from GPC)	Mw (from GPC)	PDI
PLGA	99,474	191,322	1.92

- Structure of PLGA copolymers**



Material provided for research use only. Not for human use.