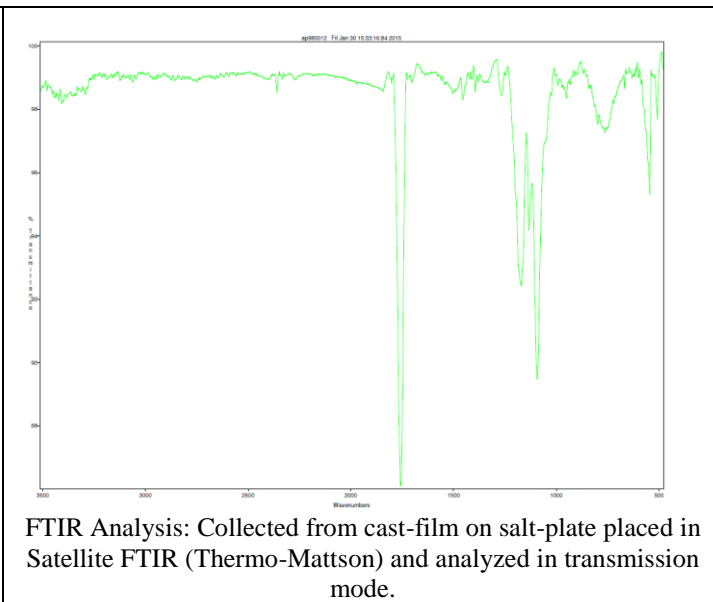
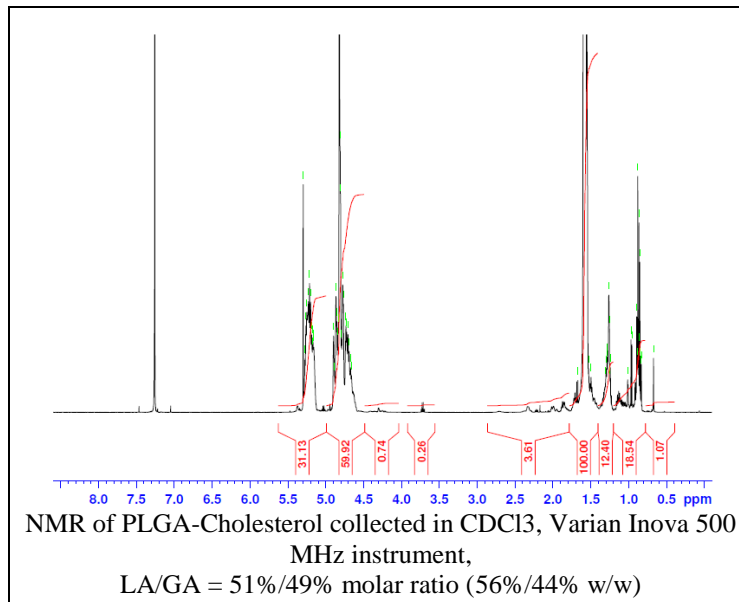


No. AP098

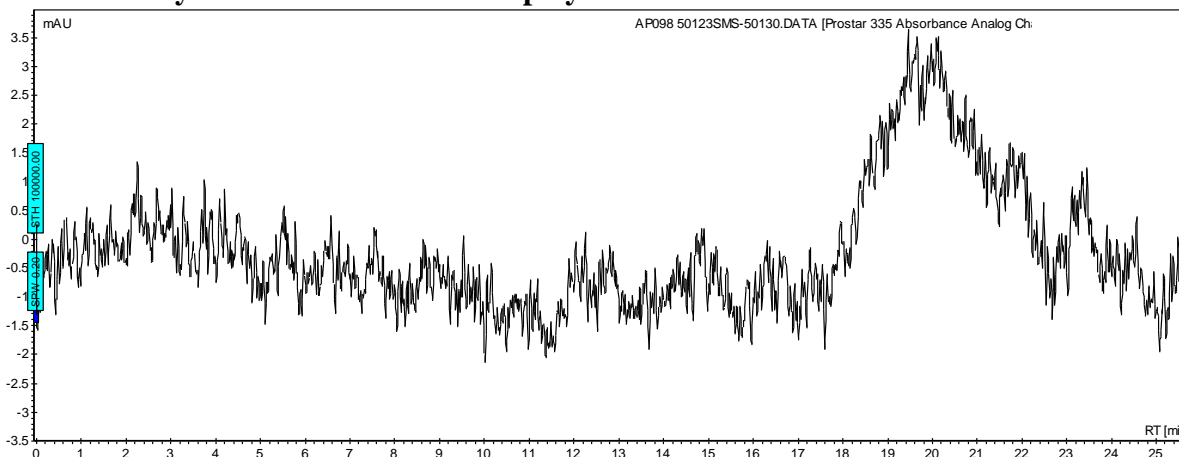
Certificate of Analysis



Product Name: Poly(lactide-co-glycolide)-Cholesterol endcap (Mn 15,000-25,000 Da) (LA:GA 1:1) (Lot # 50123SMS) REV:A



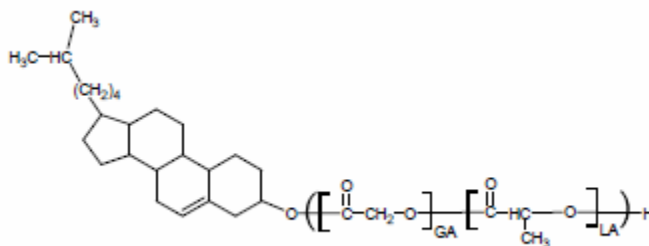
• GPC analysis of PLGA-cholesterol polymer



Analysis Method: Varian Prostar system with 1 ml/min DCM flow across two 5 μm Phenogel and one Resipore columns (Agilent) and with UV-Vis (PDA) detection. Calibrated against polystyrene standards.

Polymer	Mn (from GPC)	Mw (from GPC)	PDI
PLGA-cholesterol	24,289	37,973	1.56

• Chemical Structure



Material provided for research use only. Not for human use.