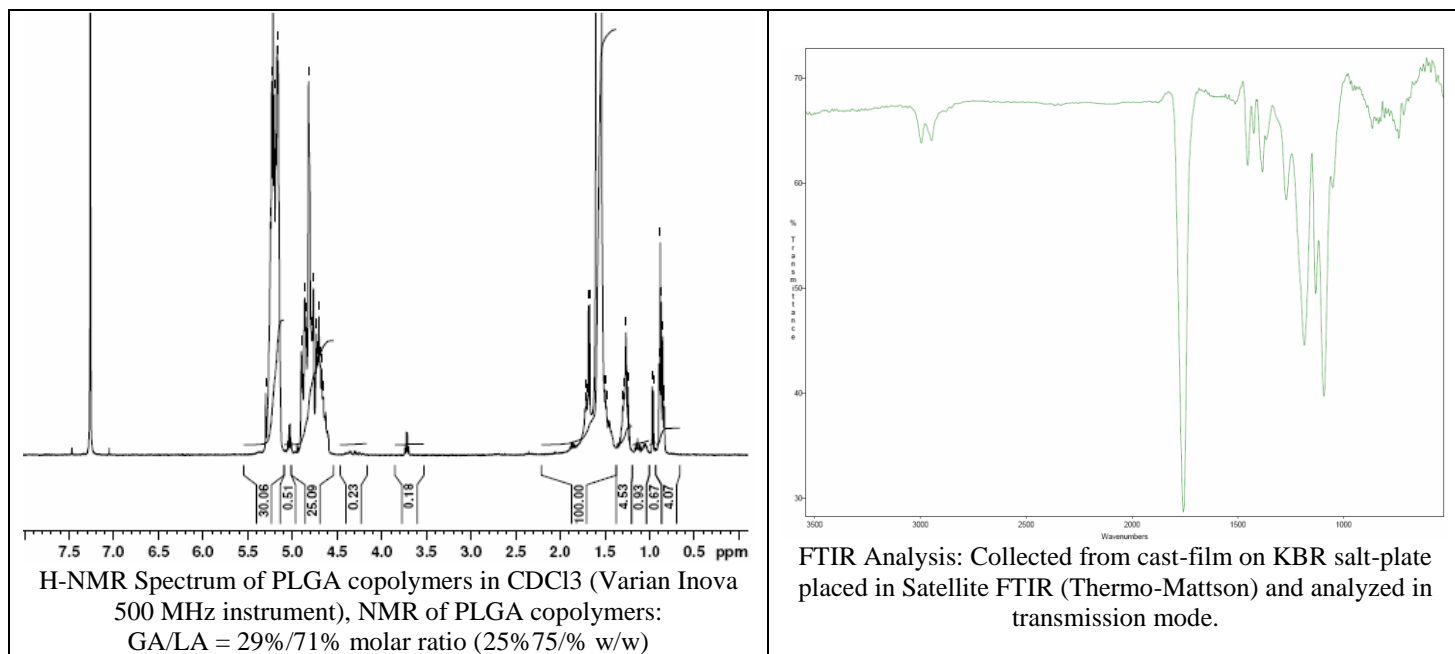
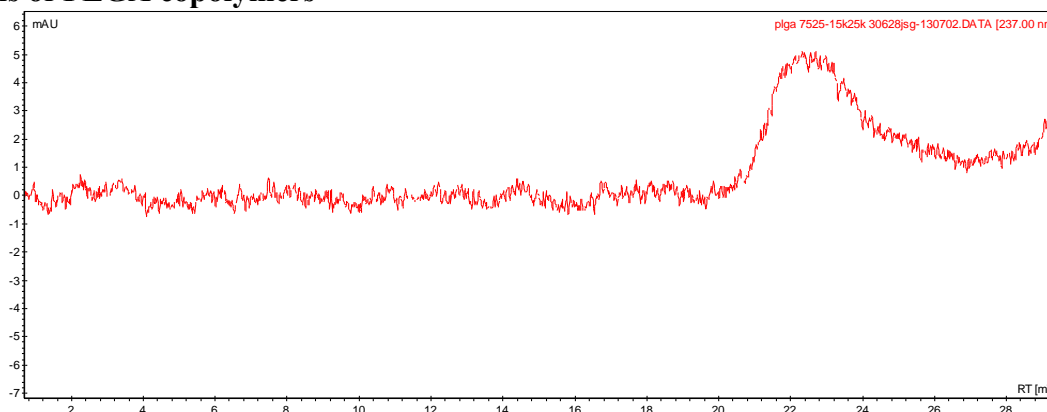


Product Name: Poly(lactic-co-glycolic) copolymers acid endcap (75:25 LA:GA, Mn: 15,000-25,000 Da) (Lot#: 30628JSG) REV:A



• GPC analysis of PLGA copolymers



Analysis Method: Varian Prostar system with 1 ml/min DCM flow across three Phenogel 5u columns and one Resipore column (Agilent). Detection via UV/Vis, calibrated against polystyrene standards

Polymer	Mn (from GPC)	Mw (from GPC)	PDI
PLGA	22,758	42,198	1.85

• Structure of PLGA copolymers

