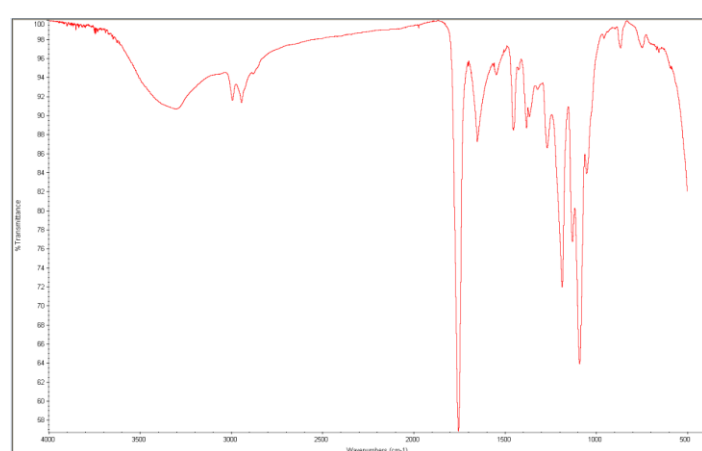
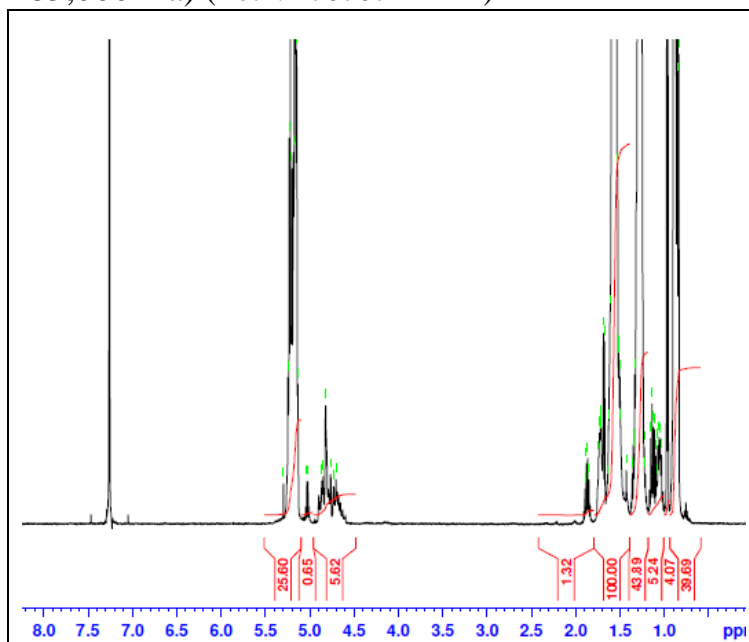


No. AP088

Certificate of Analysis



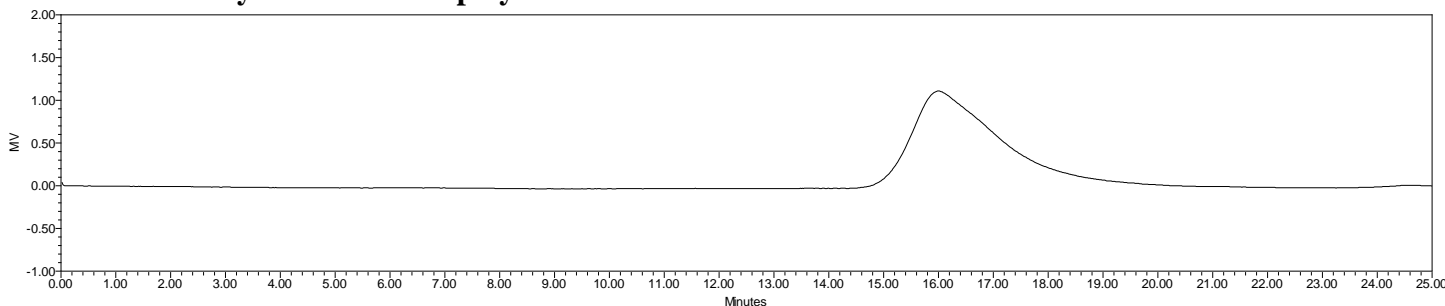
Product Name: Poly(lactide-co-glycolide) ester endcapped (90:10 LA:GA, M_n : 75,000-85,000 Da) (Lot#: 170707ELH-B)



FTIR Analysis: Collected from cast-film on salt-plate placed in Protégé 460 Spectrometer (Nicolet) and analyzed in transmission E.S.P. mode.

H-NMR Spectrum of PLGA copolymers in $CDCl_3$ (Varian Inova 500 MHz instrument), NMR of PLGA copolymers:
LA/GA = 92%/8% molar ratio (90%/10% w/w)

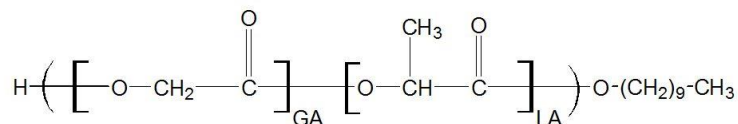
• GPC analysis of PLGA copolymers



Analysis Method: Waters Empower system with 1 ml/min THF flow across three GPC columns. Detection via refractory index, calibrated against polystyrene standards (*PEG standards).

Polymer	M_n (from GPC)	M_w (from GPC)	PDI
PLGA	80181	118934	1.48

• Structure of PLGA copolymers



Material provided for research use only. Not for human use.

PolySciTech Division of Akina, Inc. | 3495 Kent Avenue, West Lafayette, IN 47906
765-464-0390 | www.polysciotech.com

For research use only.