

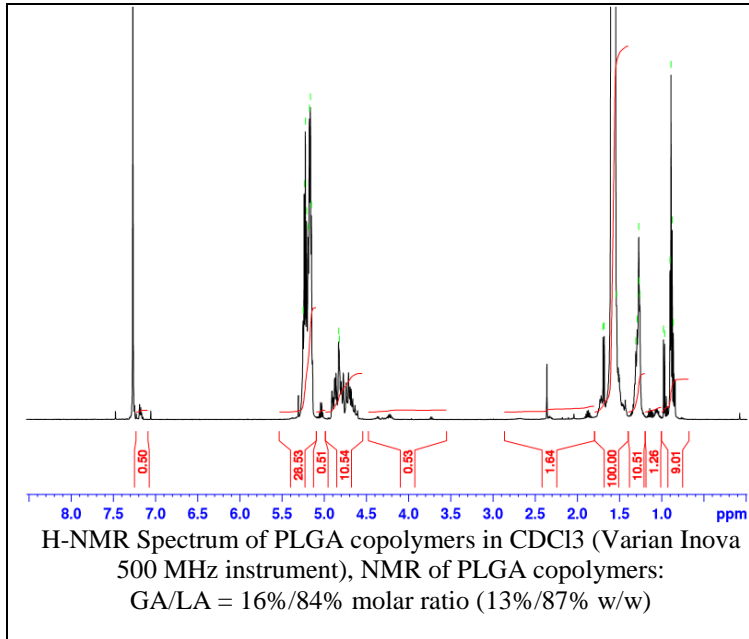
No. AP087

Certificate of Analysis

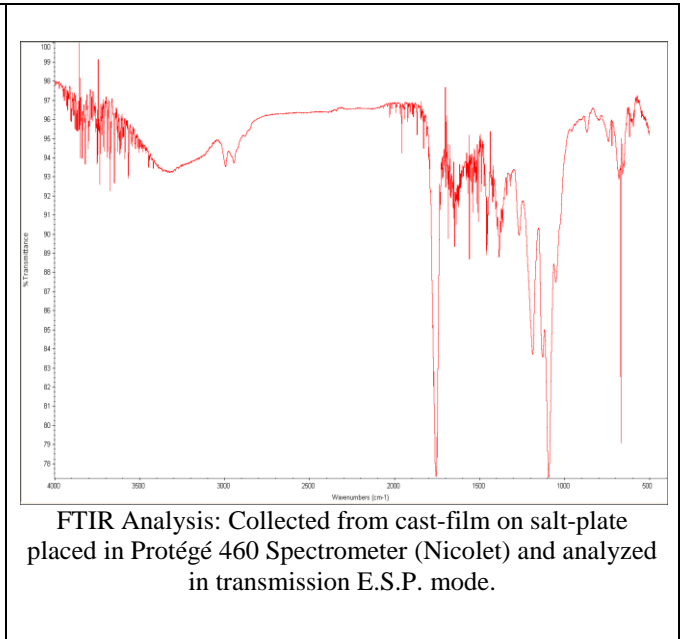


Product Name: Poly(lactide-co-glycolide) copolymers acid endcap (85:15 LA:GA, Mn: 45,000-55,000 Da) (Lot#: 70202STR-A) REV:A

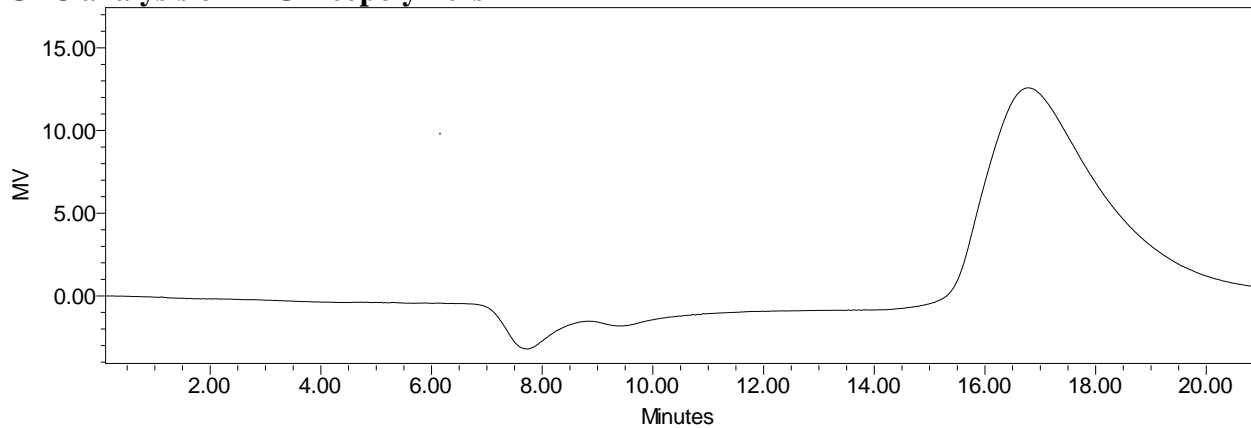
H-NMR



FTIR



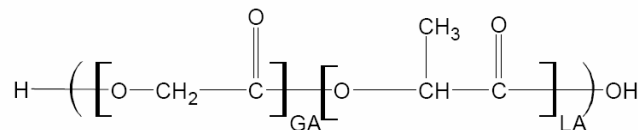
- **GPC analysis of PLGA copolymers**



Analysis Method: Waters Breeze 2 with 1 ml/min THF flow across three GPC columns (mixed porosities). Detection via refractive index, calibrated against polystyrene standards.

Polymer	Mn (from GPC)	Mw (from GPC)	PDI
PLGA	45,270	64,967	1.34

- **Structure of PLGA copolymers**



Material provided for research use only. Not for human use.

PolySciTech Division of Akina, Inc. | 3495 Kent Avenue, West Lafayette, IN 47906

765-464-0390 | www.polysciotech.com

For research use only.