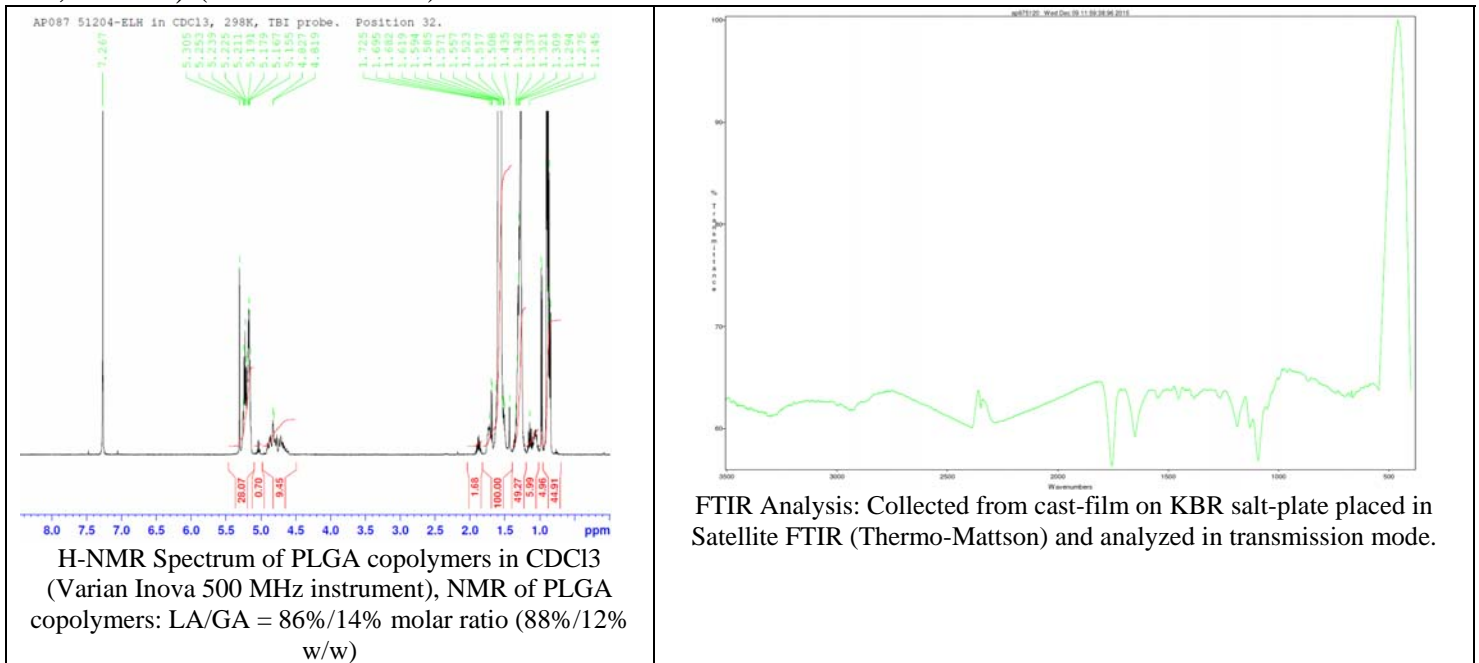


# No. AP87

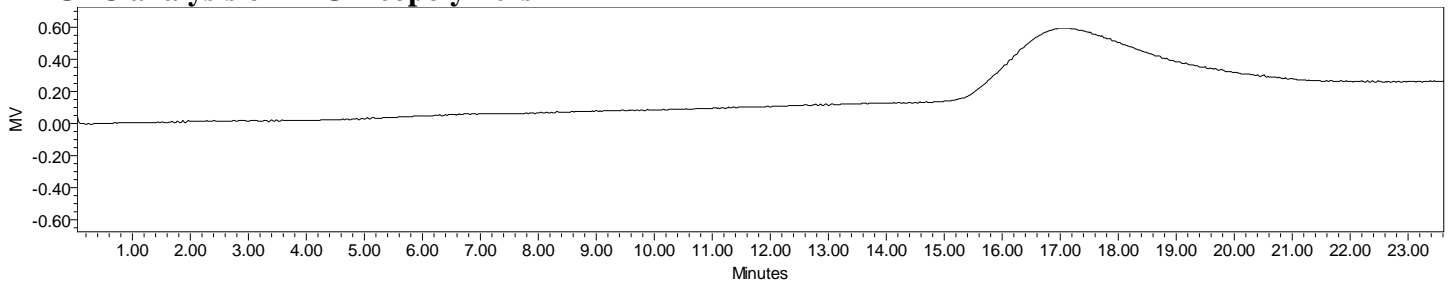
# Certificate of Analysis



Product Name: Poly(lactide-co-glycolide) copolymers acid endcap (85:15 LA:GA, Mn: 45,000-55,000 Da) (Lot#: 51204ELH)



## • GPC analysis of PLGA copolymers



Analysis Method: Waters Breeze 2 system with 1 ml/min DCM flow across three Phenogel 5um columns (Phenomenex). Detection via refractive index, calibrated against polystyrene standards.

Polymer	Mn (from GPC)	Mw (from GPC)	PDI
PLGA	53,333	102,922	1.93

## • Structure of PLGA copolymers

