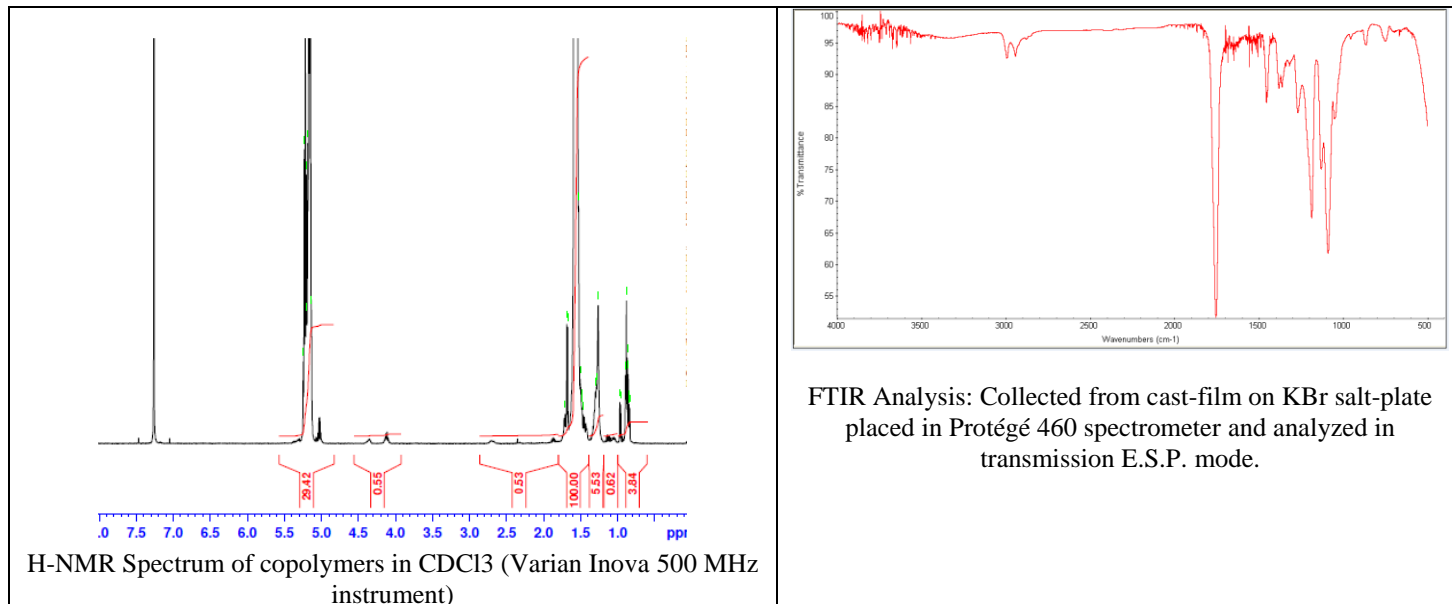


No. AP086

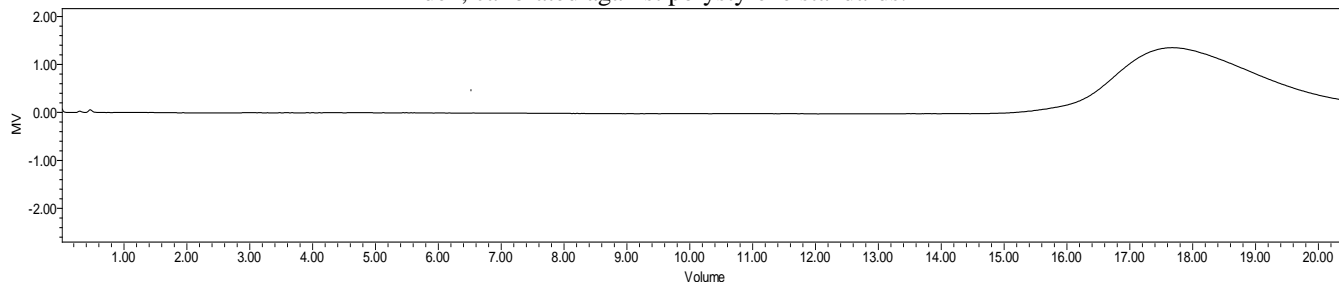
Certificate of Analysis



Product Name: Poly(DL-lactide) ester endcapped (Mn: 15,000 - 25,000 Da)
(Lot#: 170926SLG-B)



GPC Analysis Method: Waters Breeze 2 system with 1 ml/min THF flow across three GPC columns. Detection via refractive index, calibrated against polystyrene standards.



Polymer	M _n (from GPC)	M _w (from GPC)	PDI
PDLLA	21,320	30,785	1.44

- Structure of PDLLA polymers**

