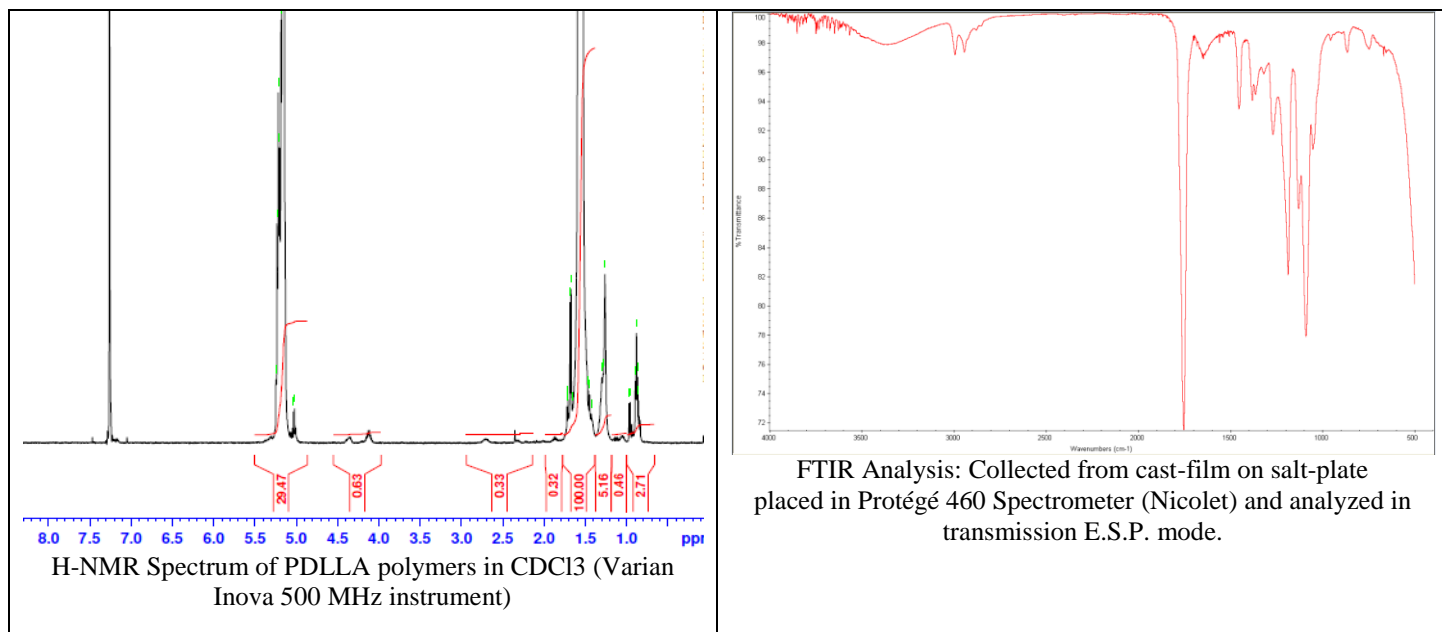
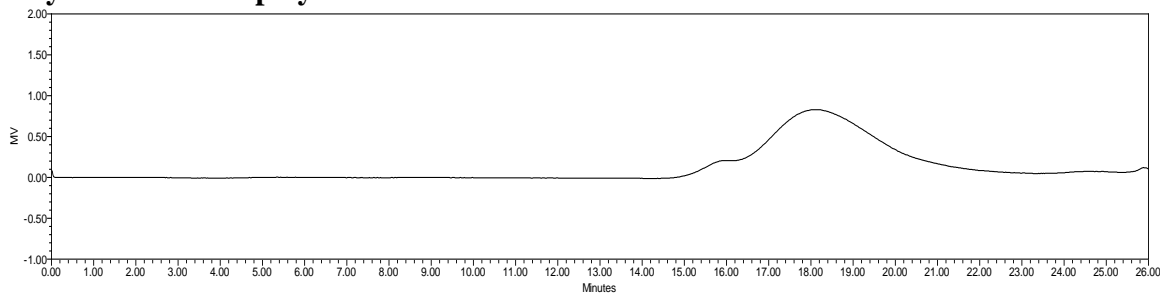


No. AP086 Certificate of Analysis

Product Name: Poly(DL-lactic acid) ester endcapped (Mn: 15,000-25,000 Da) (Lot#: 170707ELH-A)



- GPC analysis of PDLLA polymers



Analysis Method: Waters Empower system with 1 ml/min THF flow across three GPC columns. Detection via refractory index, calibrated against polystyrene standards (*PEG standards).

Polymer	Mn (from GPC)	Mw (from GPC)	PDI
PDLLA	16498	33817	2.04

- Structure of PDLLA polymers

