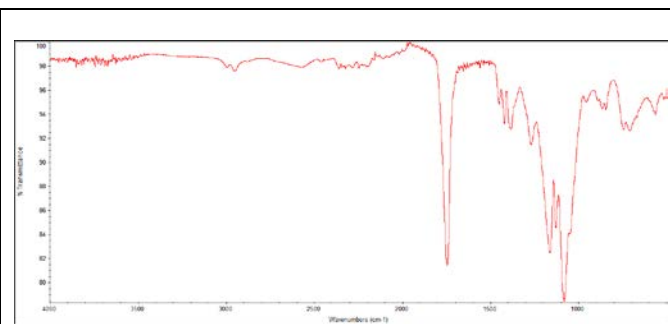
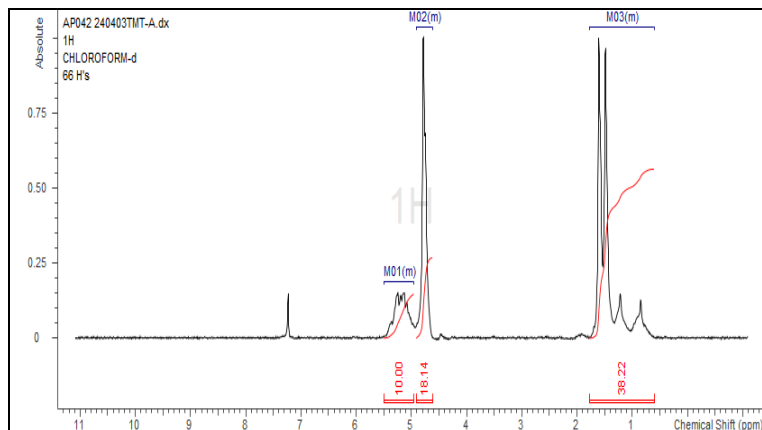


No. AP082

Certificate of Analysis

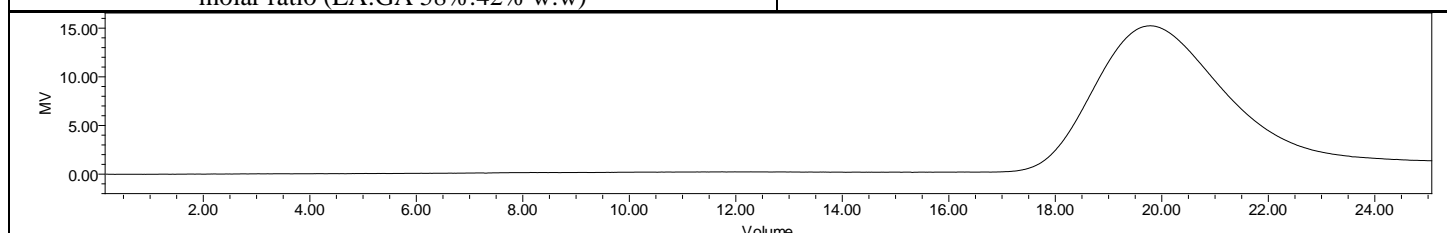


Product Name: Poly(lactide-co-glycolide) LG 50:50 acid endcap (M_n 25,000-35,000 Da)
(Lot# 240403TMT-A)



FTIR Analysis: Collected from IS5 ID7-ATR spectrometer (Thermo Scientific) and analyzed in transmission mode.

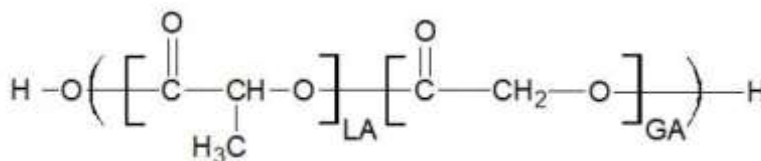
H-NMR Spectrum of copolymers in CDCl₃ (NMReady-60e, Nanalysis 60 MHz) NMR of PLGA Copolymer: LA:GA 52%:48% molar ratio (LA:GA 58%:42% w:w)



GPC-ES Analysis Method: Waters Breeze 2 system with 1 ml/min THF flow across three GPC columns. Detection via refractive index, calibrated against polystyrene standards.

Polymer	M_n (from GPC)	M_w (from GPC)	PDI
PLGA	25,357	34,145	1.35

• Structure of PLGA copolymers



Approved By:
Amie Tyler
Quality Manager