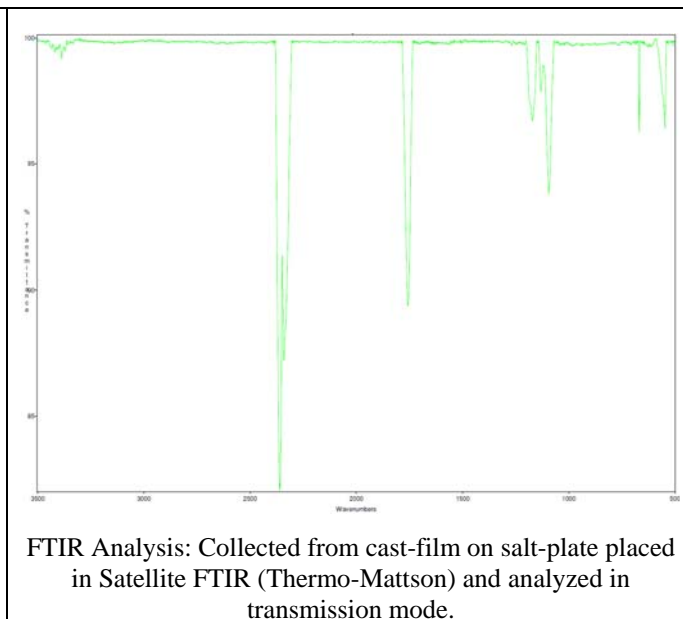
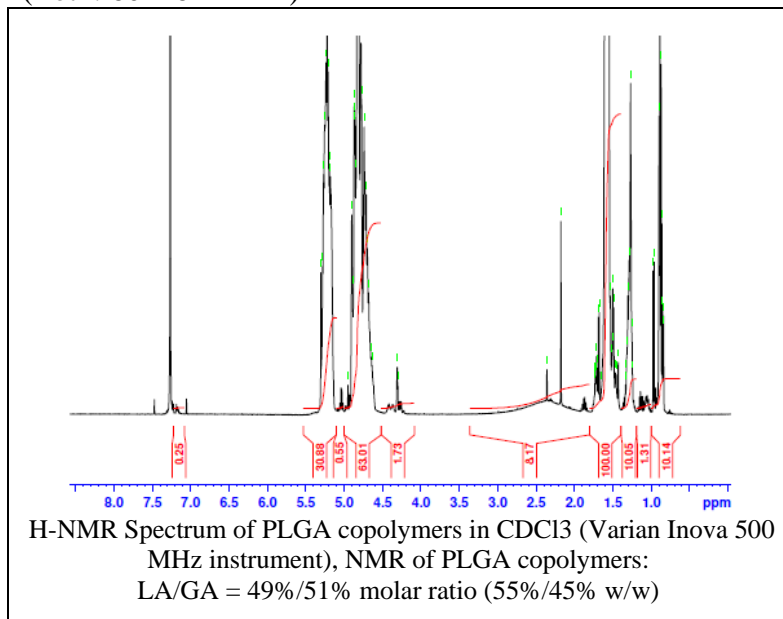


No. AP081

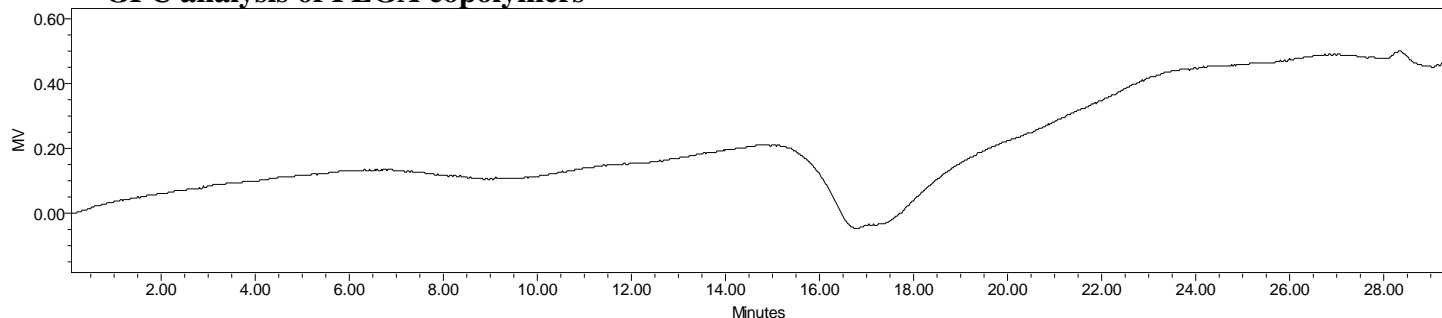
# Certificate of Analysis



Product Name: Poly(lactic-co-glycolic) acid endcap (50:50 LA:GA, Mn: 5,000-10,000Da)  
(Lot#: 60426AHT-A)



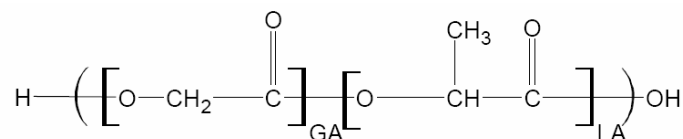
## • GPC analysis of PLGA copolymers



Analysis Method: Varian Prostar system with 1 ml/min DCM flow across two Phenogel 5 μm columns and one PLgel Resipore column (Agilent). Detection via UV/Vis, calibrated against polystyrene standards.

Polymer	Mn (from GPC)	Mw (from GPC)	PDI
PLGA	6,106	16,120	2.64

## • Structure of PLGA copolymers



Material provided for research use only. Not for human use.

PolySciTech Division of Akina, Inc. | 3495 Kent Avenue, West Lafayette, IN 47906  
765-464-0390 | www.polysciotech.com

For research use only.