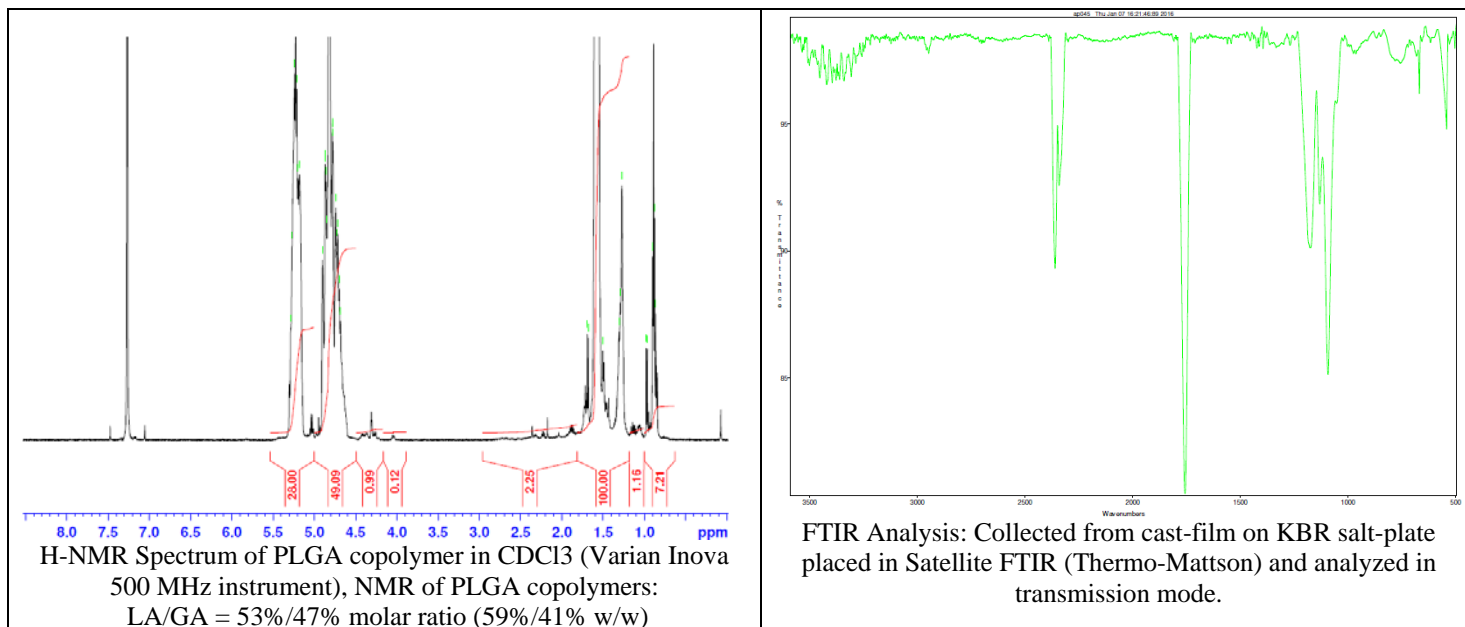


No. AP081

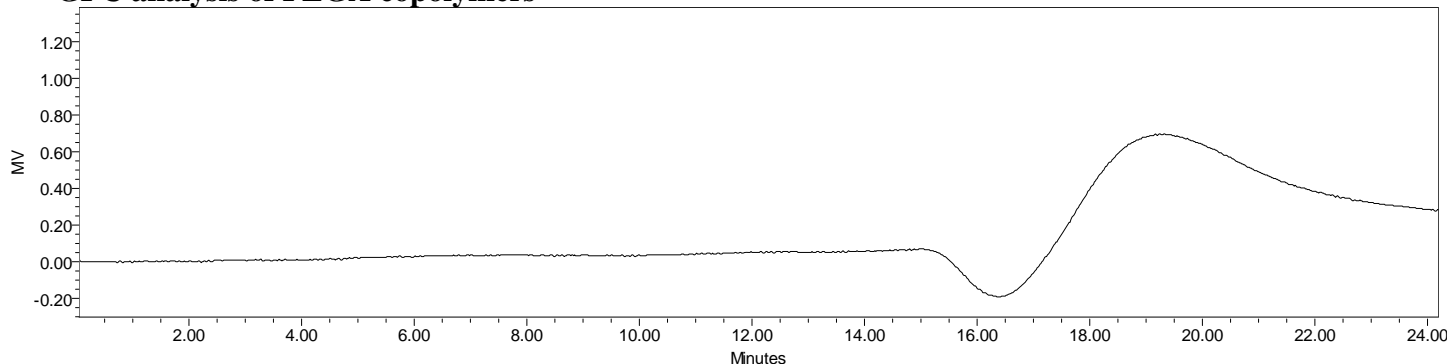
Certificate of Analysis



Product Name: Poly(lactide-co-glycolide) acid endcap (50:50 LA:GA, M_n : 5,000-10,000 Da)
(Lot#: 51217MJK)



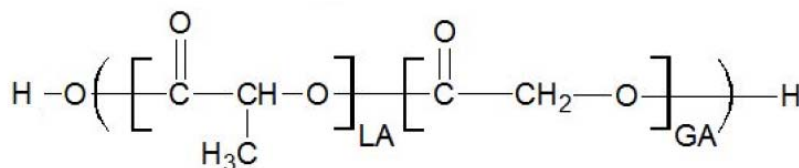
• GPC analysis of PLGA copolymers



Analysis Method: Waters Breeze 2 system with 1 ml/min DCM flow across three Phenogel 5um columns (Phenomenex). Detection via refractive index, calibrated against polystyrene standards.

Polymer	M_n (from GPC)	M_w (from GPC)	PDI
PLGA	7,127	17,599	2.47

• Structure of PLGA copolymers



Material provided for research use only. Not for human use.

PolySciTech Division of Akina, Inc. | 3495 Kent Avenue, West Lafayette, IN 47906
765-464-0390 | www.polysciotech.com

For research use only.