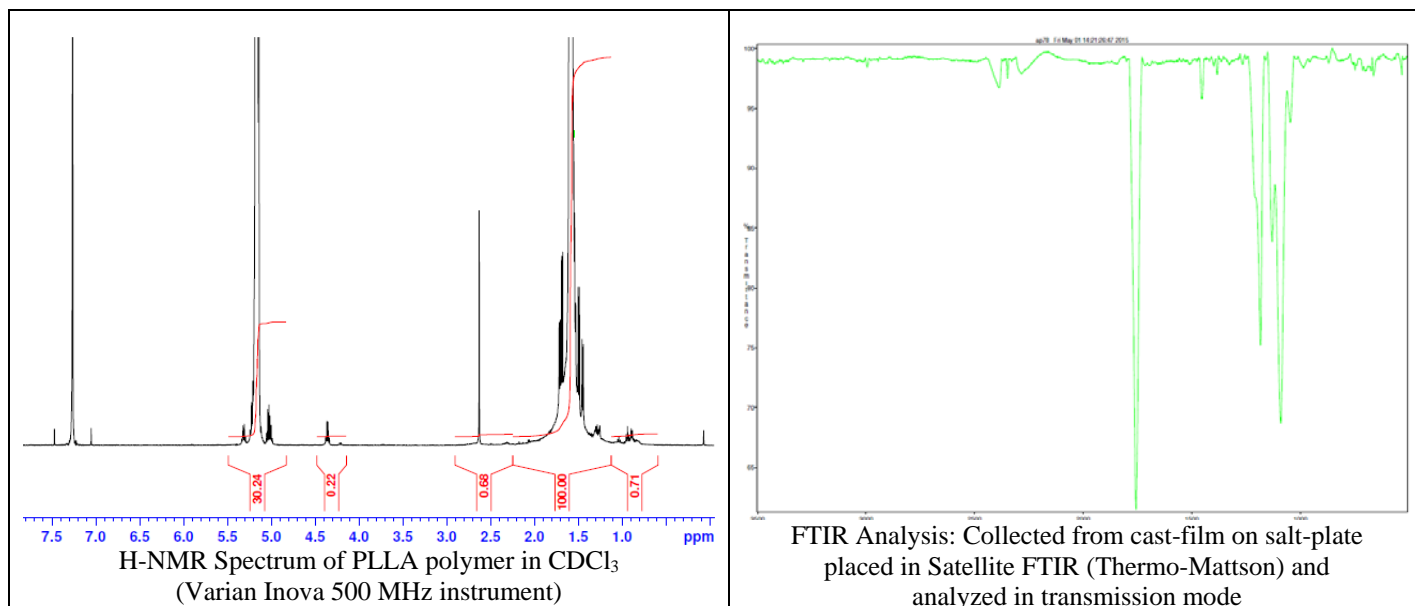


No. AP078

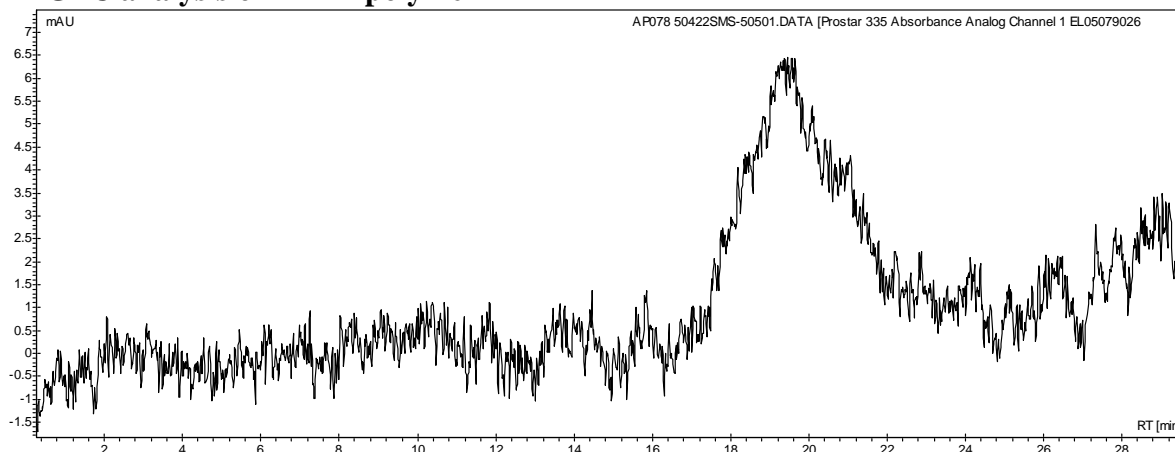
Certificate of Analysis



Product Name: Poly(L-lactic acid) acid endcap (M_n : 25,000-35,000 Da) (Lot#: 50422SMS)



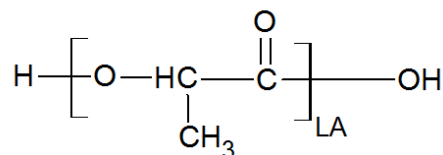
- **GPC analysis of PLLA polymer**



Analysis Method: Varian Prostar system with 1 ml/min DCM flow across two Phenogel 5 μ m columns and one PLGel Resipore column (Agilent). Detection via UV/Vis, calibrated against polystyrene standards.

Polymer	M_n (from GPC)	M_w (from GPC)	PDI
PLLA	25116	62196	2.48

- **Structure of PLLA polymer**



Material provided for research use only. Not for human use.

PolySciTech Division of Akina, Inc. | 3495 Kent Avenue, West Lafayette, IN 47906

765-464-0390 | www.polysciotech.com

For research use only.