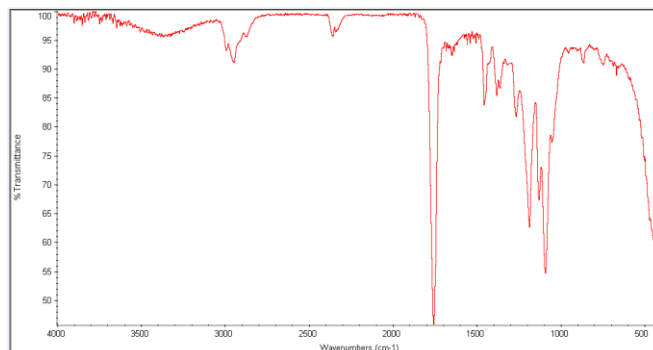
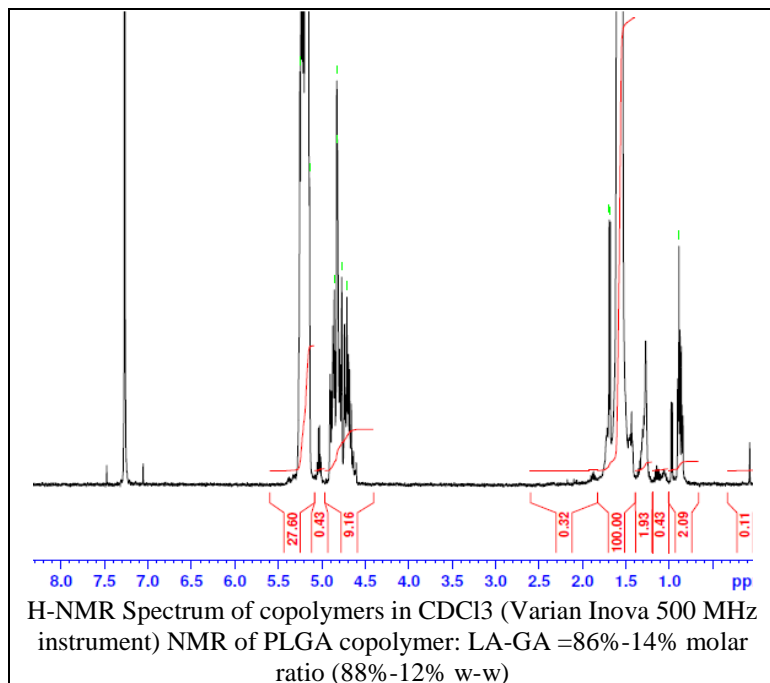


No. AP075

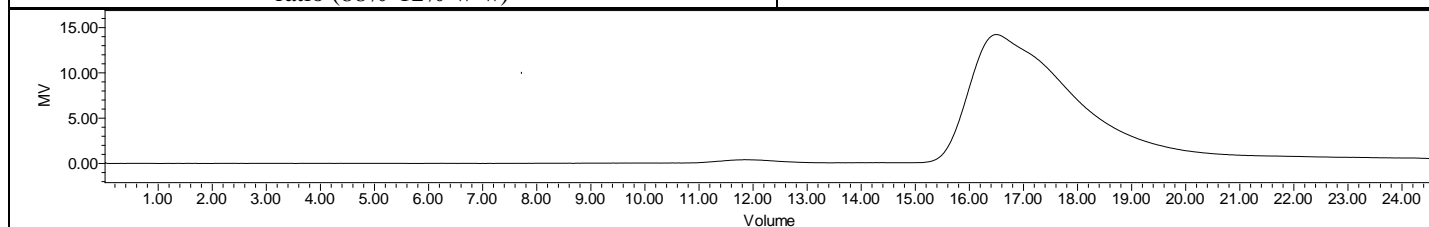
# Certificate of Analysis



Product Name: Poly(lactide-co-glycolide) ester endcap (85:15 LA:GA,  
Mn: 100,000-200,000Da) (Lot#: 180926RAI-A)



FTIR Analysis: Collected from cast-film on KBr salt-plate placed in Nicolet Avatar 320 spectrometer and analyzed in transmission mode.



GPC Analysis Method: Waters Breeze 2 system with 1 ml/min THF flow across three GPC columns. Detection via refractive index, calibrated against polystyrene standards.

Polymer	M <sub>n</sub> (from GPC)	M <sub>w</sub> (from GPC)	PDI
PLGA	129,531	228,899	1.77

- Structure of PLGA copolymers

