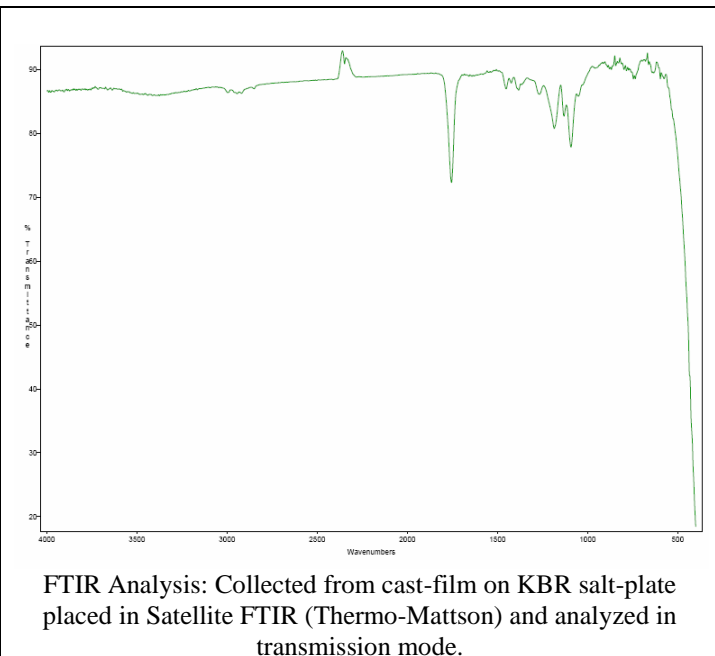
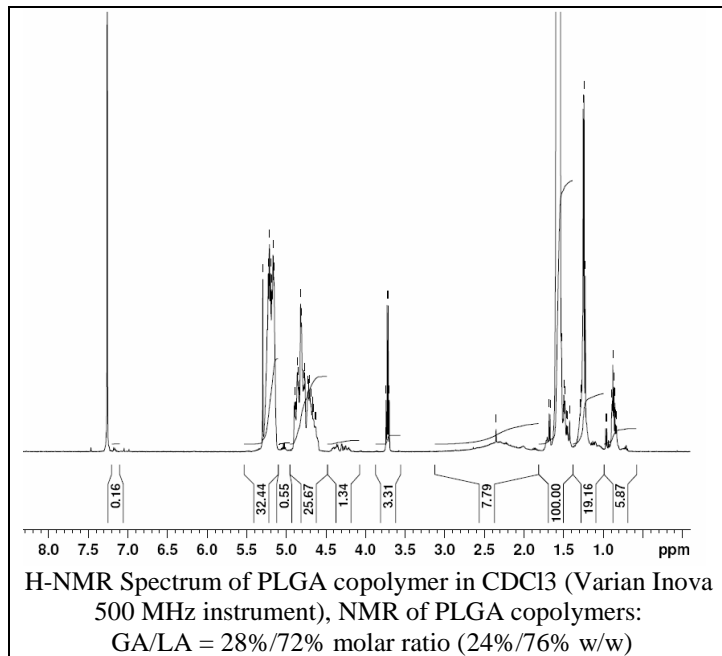


No. AP73

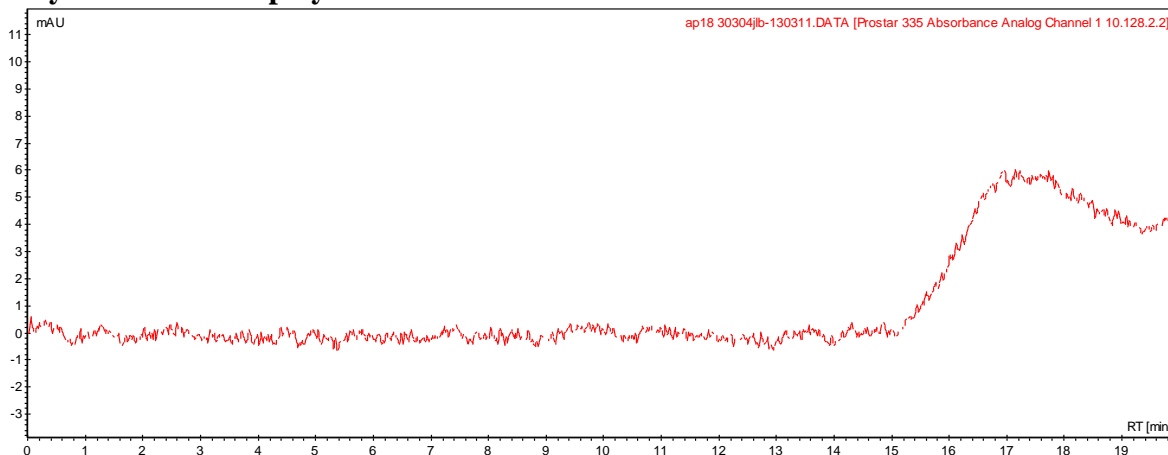
Certificate of Analysis



Product Name: Poly(lactic-co-glycolic acid) (75:25 LA:GA, Mn: 5,000-10,000Da) (Lot#: 30304JLB) REV:A



• GPC analysis of PLGA copolymers



Analysis Method: Varian Prostar system with 1 ml/min DCM flow across two PLgel Resipore columns (Agilent). Detection via UV/Vis, calibrated against polystyrene standards

| Polymer | Mn (from GPC) | Mw (from GPC) | PDI |
|---------|---------------|---------------|------|
| PLGA | 5,665 | 8,342 | 1.47 |

• Structure of PLGA copolymers

