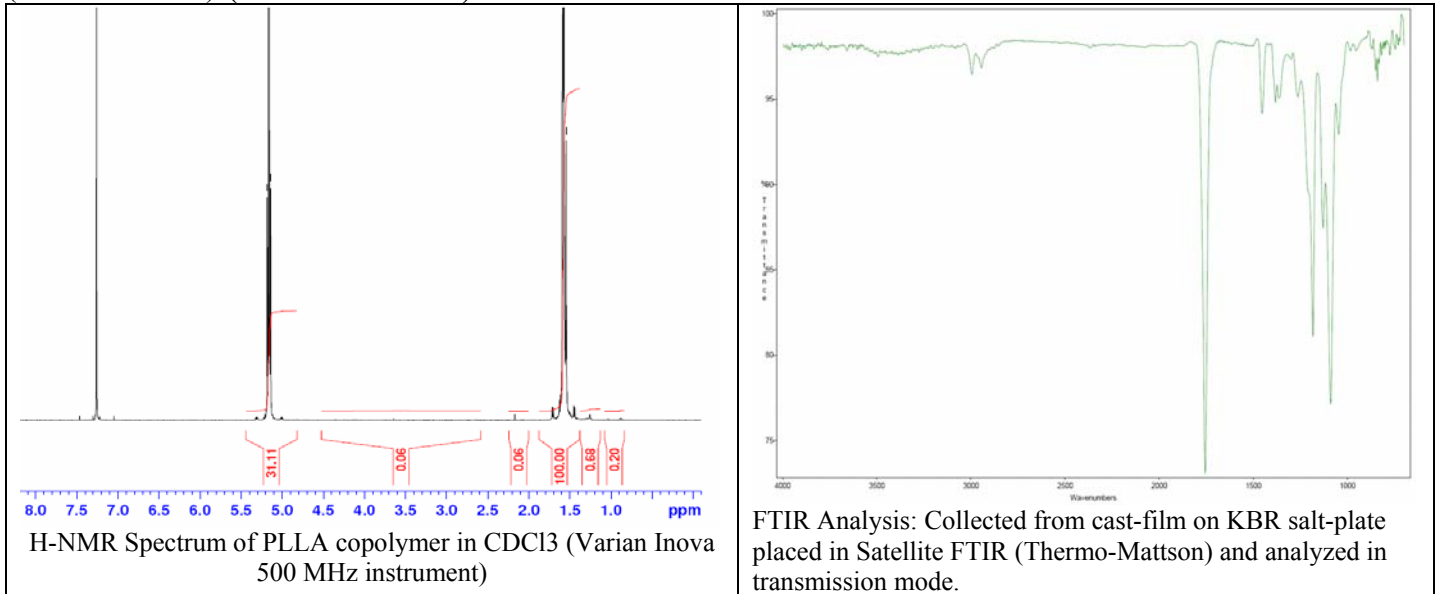
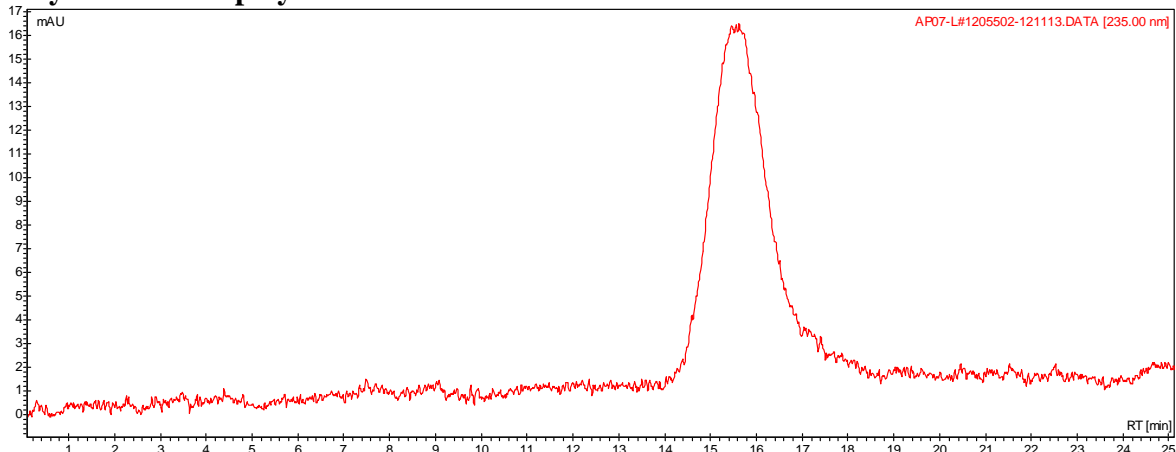


No. AP65 Certificate of Analysis

Product Name: Poly(L-lactic) acid polymer acid endcapped (MW ~ 230,000 Da)
 (Lot#: 1205502) (Mn 150k-200k)



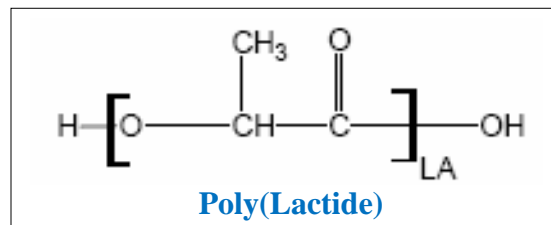
- **GPC analysis of PLLA polymer**



Analysis Method: Varian Prostar system with 1 ml/min DCM flow across two PLgel mixed-D columns and one Mixed-E column (Agilent). Detection via UV/Vis, calibrated against polystyrene standards

Polymer	Mn (from GPC)	Mw (from GPC)	PDI
PLLA	163,723	259,185	1.58

- **Structure of PLLA polymer**



This specific batch is distributed by Akina, Inc. on behalf of original manufacturer.
 Quality testing was performed in-house by Akina, Inc. prior to sale and is as shown here.
 This batch manufactured in China.