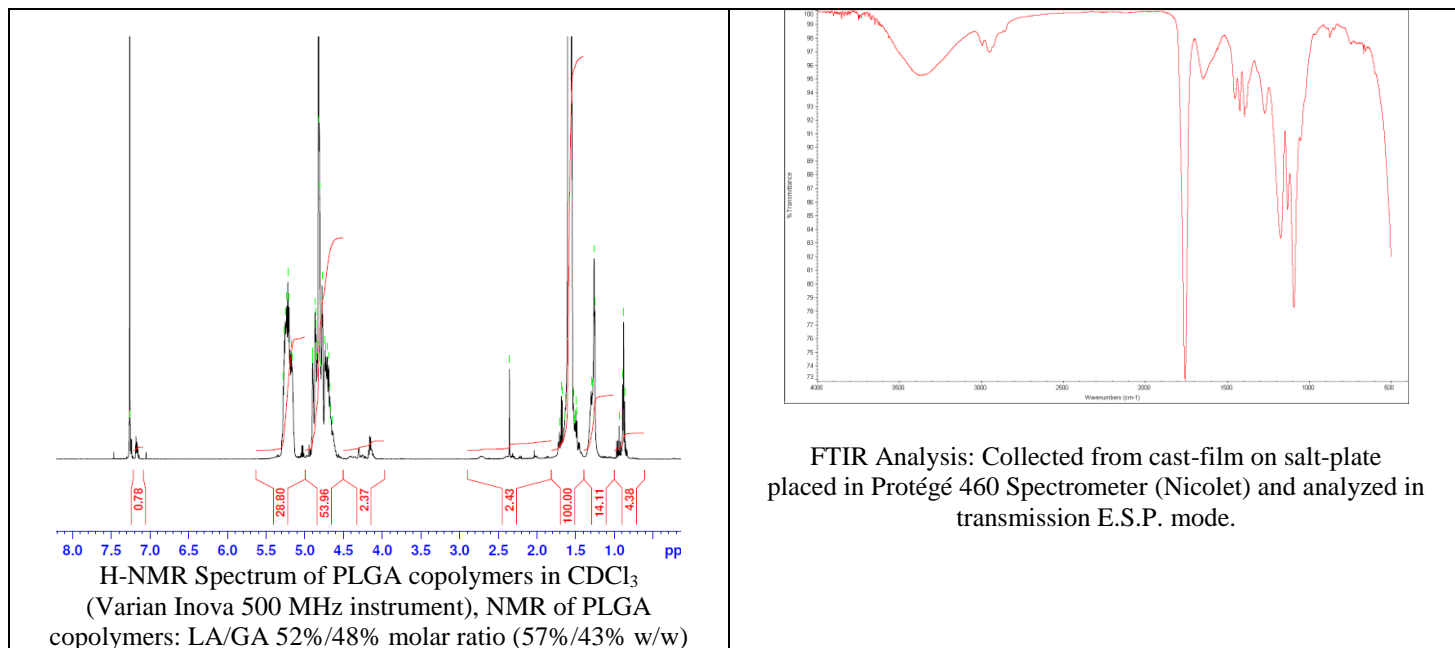


No. AP062

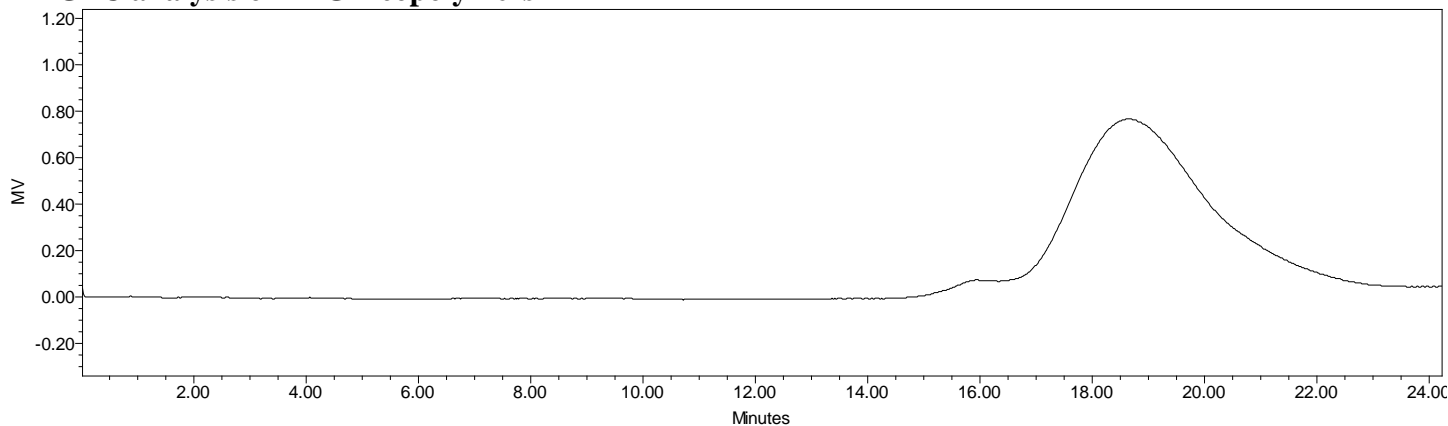
Certificate of Analysis



Product Name: Poly(lactide-co-glycolide) copolymers, ester endcap (50:50 LA:GA,
M_n: 5,000-10,000 Da) (Lot#: 170616SMS-A)



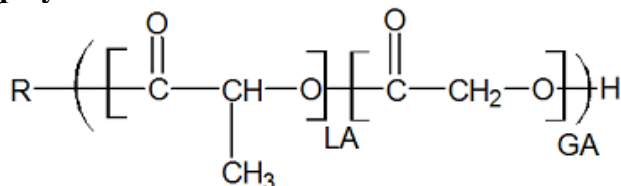
• GPC analysis of PLGA copolymers



Analysis Method: Waters Breeze system with 1 ml/min THF flow across three GPC columns. Detection via refractory index, calibrated against polystyrene standards (*PEG standards).

Polymer	M _n (from GPC)	M _w (from GPC)	PDI
PLGA	9510	15399	1.62

• Structure of PLGA copolymers



Material provided for research use only. Not for human use.

PolySciTech Division of Akina, Inc. | 3495 Kent Avenue, West Lafayette, IN 47906

765-464-0390 | www.polysciotech.com

For research use only.