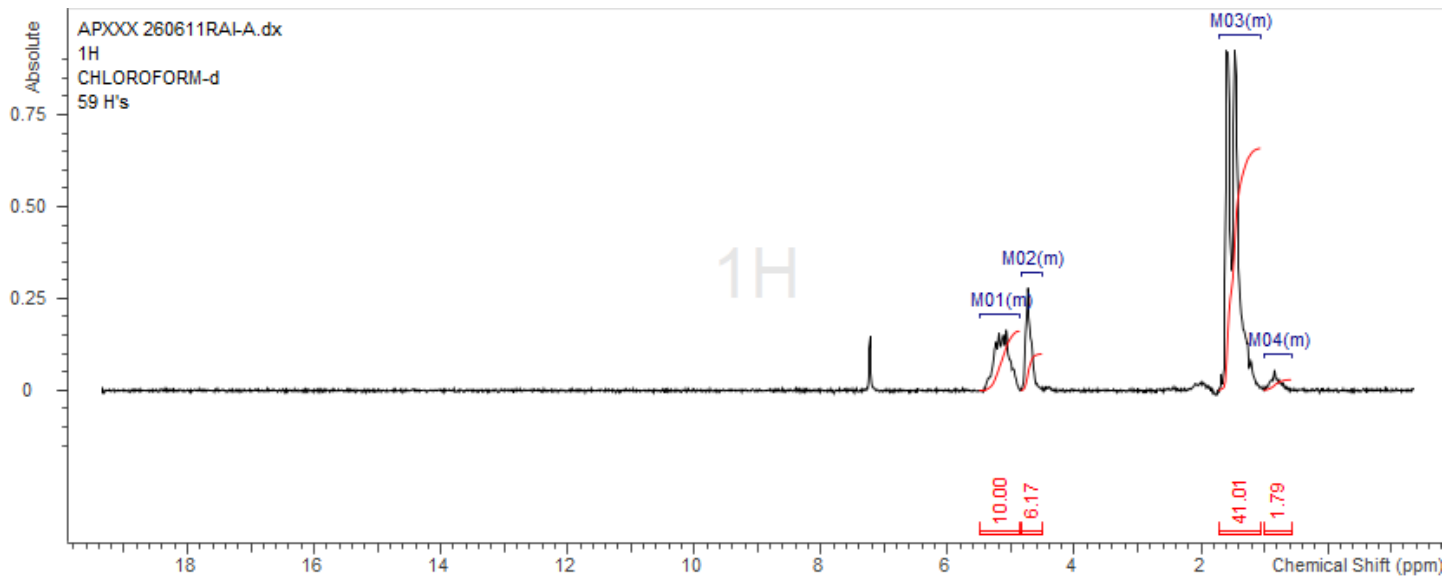


No. AP054 Certificate of Analysis

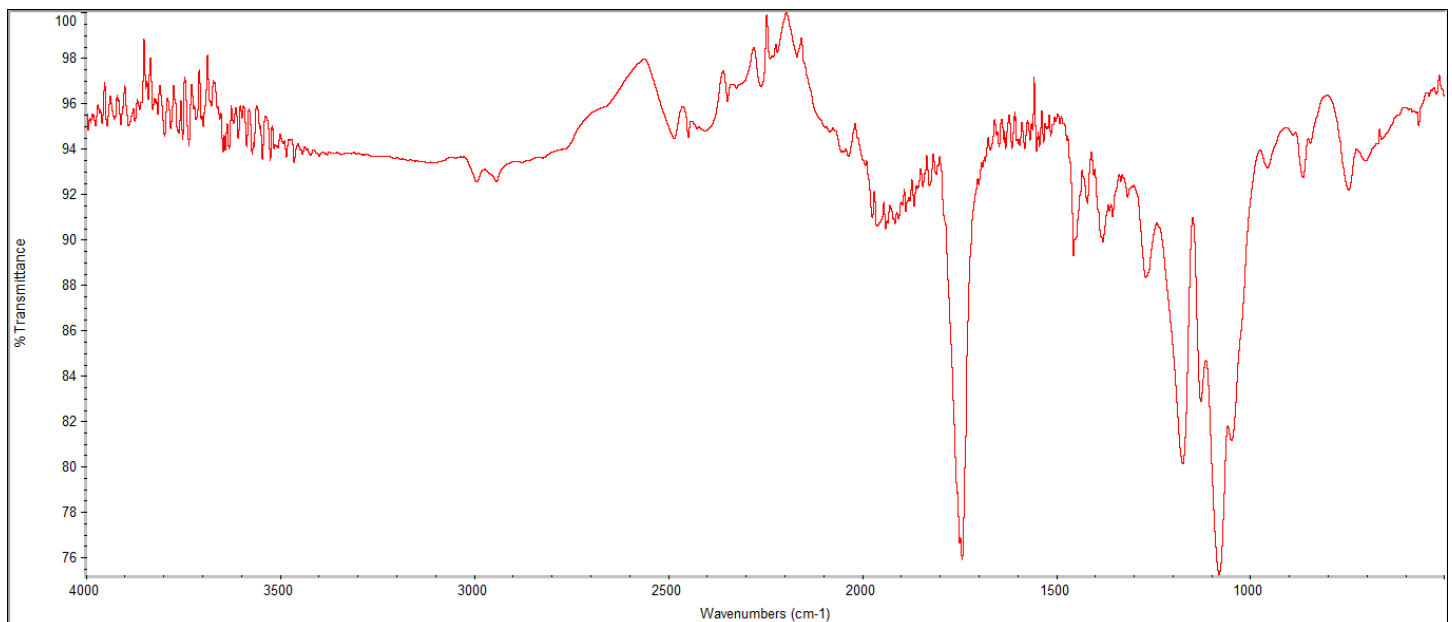
Product Name: Poly(lactide-co-glycolide) ester endcap (75:25 LA:GA,
Mn: 25,000-35,000 Da) (Lot#: 260611RAI-A)

H-NMR



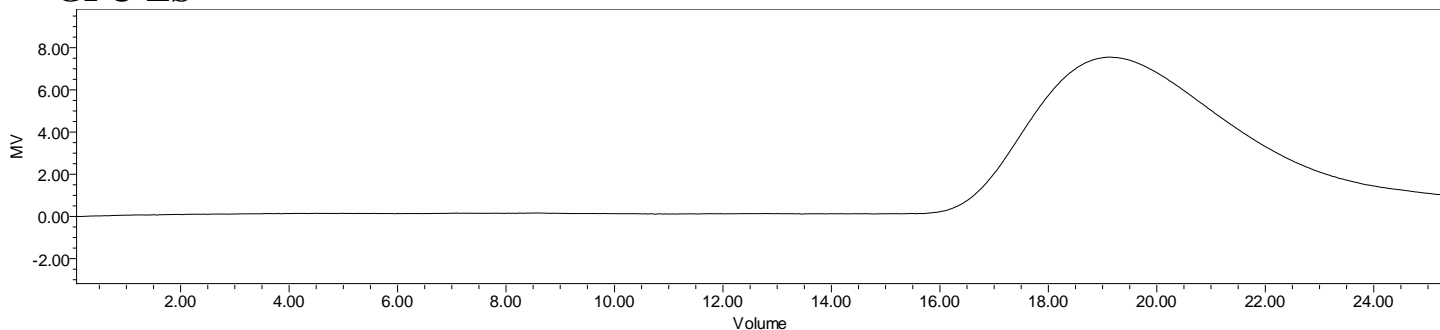
H-NMR Spectrum of copolymers in CDCl₃ (Bruker ≥300 MHz, PINMRF) NMR of PLGA copolymer: LA-GA =76%-24% molar ratio (LA:GA 80%:20%)

FTIR



FTIR Analysis: Collected from IS5 ID7-ATR spectrometer (Thermo Scientific) and analyzed in transmission mode.

GPC-ES



Polymer	M _n (from GPC)	M _w (from GPC)	PDI
PLGA	26,593	35,400	1.33

GPC-ES Analysis Method: Waters Breeze 2 system with 1 ml/min THF flow across three GPC columns. Detection via refractive index, calibrated against polystyrene standards.

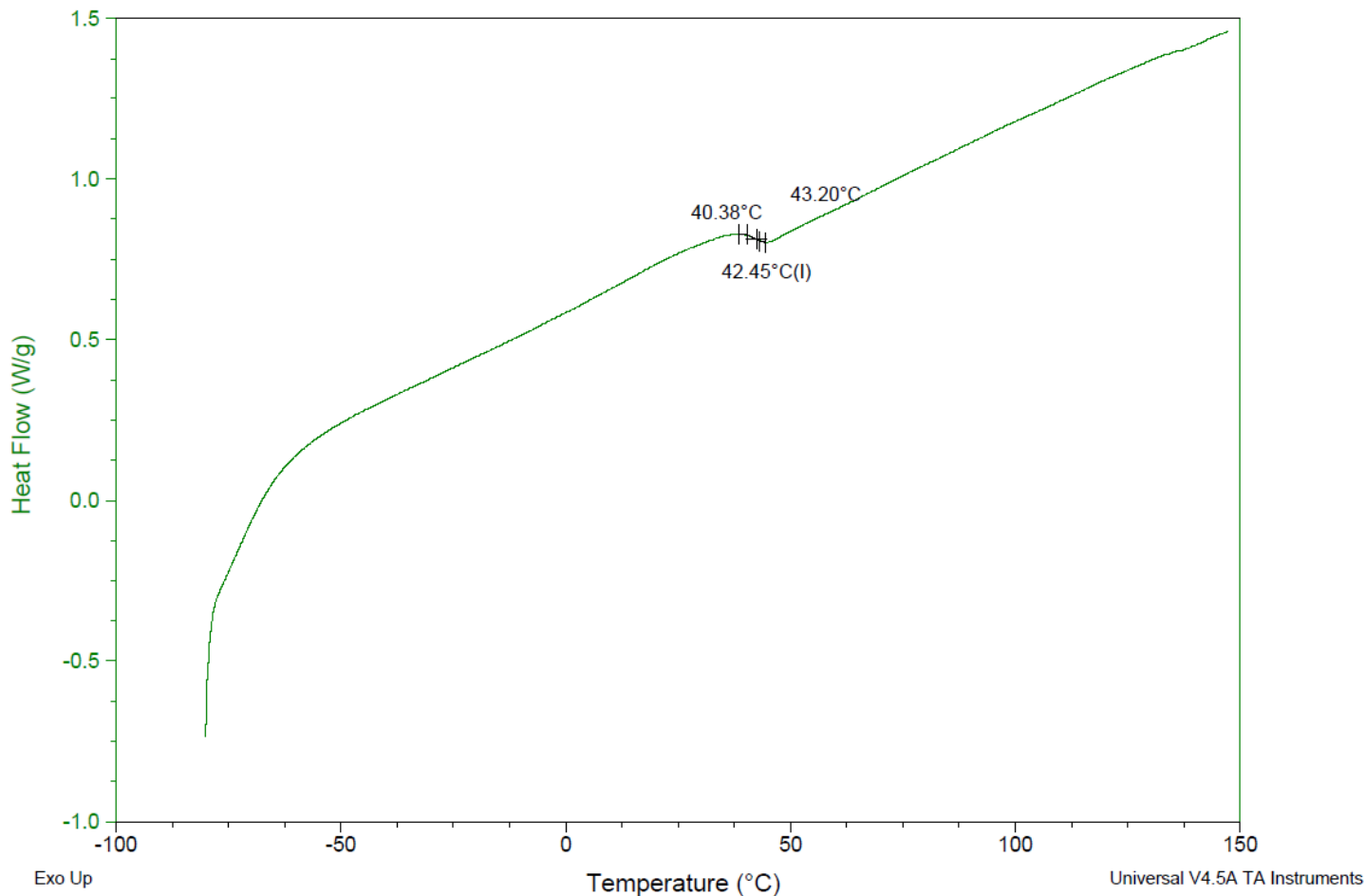
DSC

Sample: APXXX 260611RAI-A
 Size: 1.7000 mg
 Method: Ramp

DSC

File: C:\...COA\APXXX 260611RAI-A.002

Run Date: 16-Jun-2026 12:52
 Instrument: DSC Q2000 V24.11 Build 124

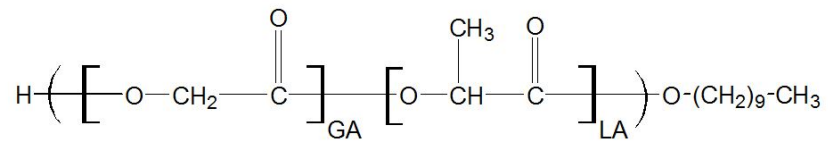


DSC Testing: 1-5 mg sample tested in crimped aluminum pan on a TA Instruments Model Q2000 with procedure equilibraion 100 °C, isothermal 5 minutes, equilibrate -80 °C, data on, ramp 10 °C/min to 150 °C. T_g = 42.45 °C

IV

Inherent Viscosity: 0.169 ± 0.010 dL/g (calculated from kinematic viscosity at 2% w/v Acetone on Rheosense microVISC, n=3) at 25°C.

Structure of copolymers



Approved By:
Amie Tyler
Quality Manager