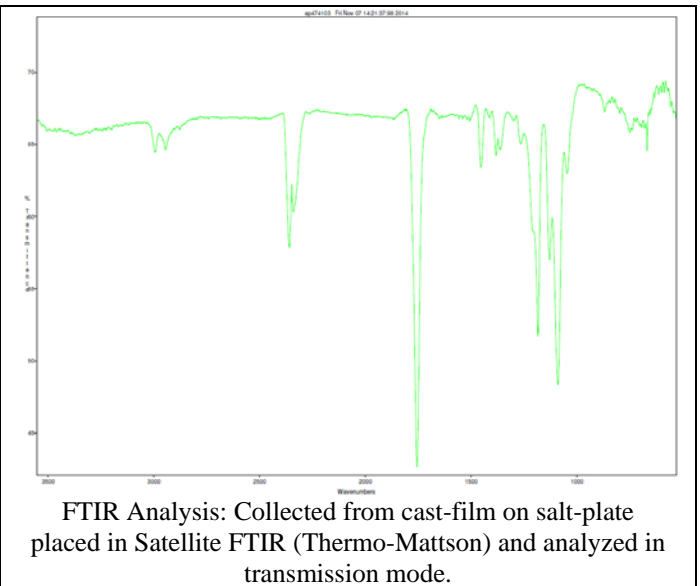
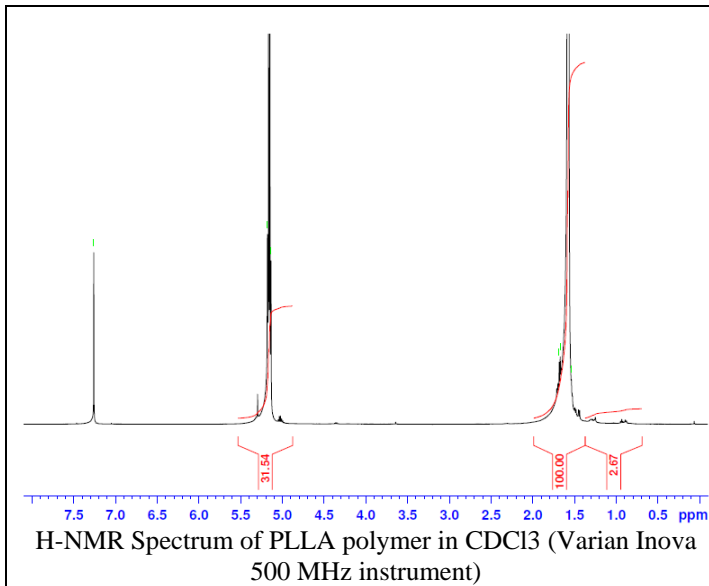
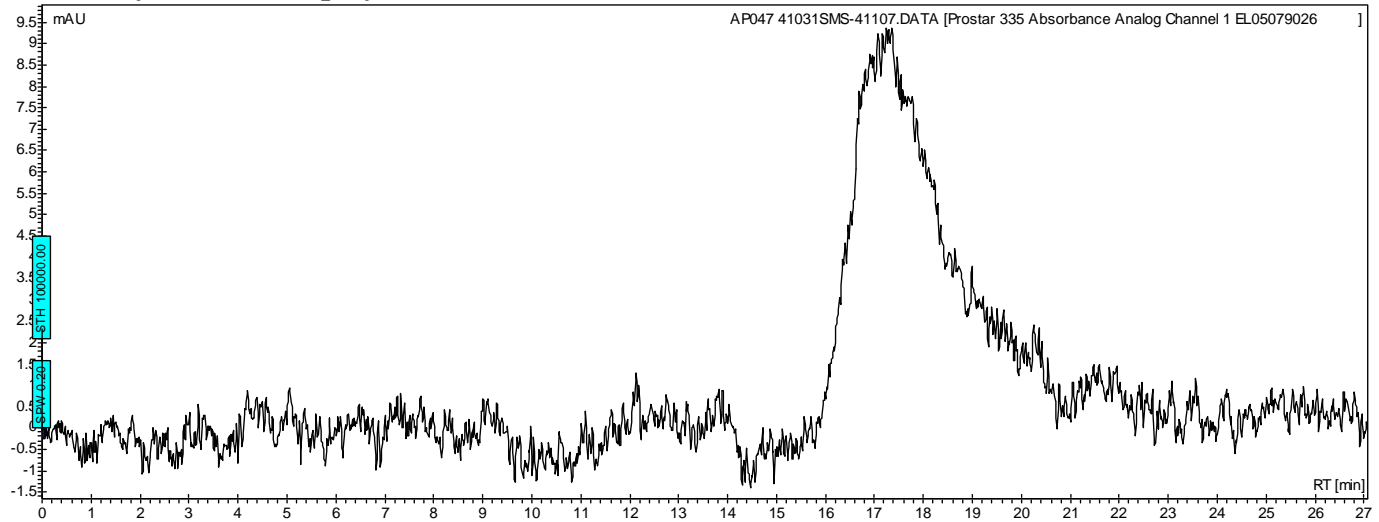


# No. AP047 Certificate of Analysis

Product Name: Poly((L)Lactic acid) acid endcap (M<sub>N</sub>: 45,000-55,000 Da) (Lot#: 41031SMS)

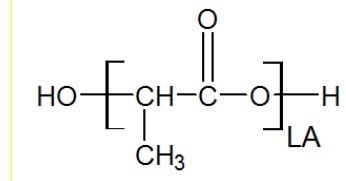


- **GPC analysis of PLLA polymer**



Polymer	M <sub>n</sub> (from GPC)	M <sub>w</sub> (from GPC)	PDI
PLLA	45,831	87,285	1.94

- **Structure of PLLA polymer**



Material provided for research use only. Not for human use.

PolySciTech Division of Akina, Inc. | 3495 Kent Avenue, West Lafayette, IN 47906

765-464-0390 | www.polysciotech.com

For research use only.