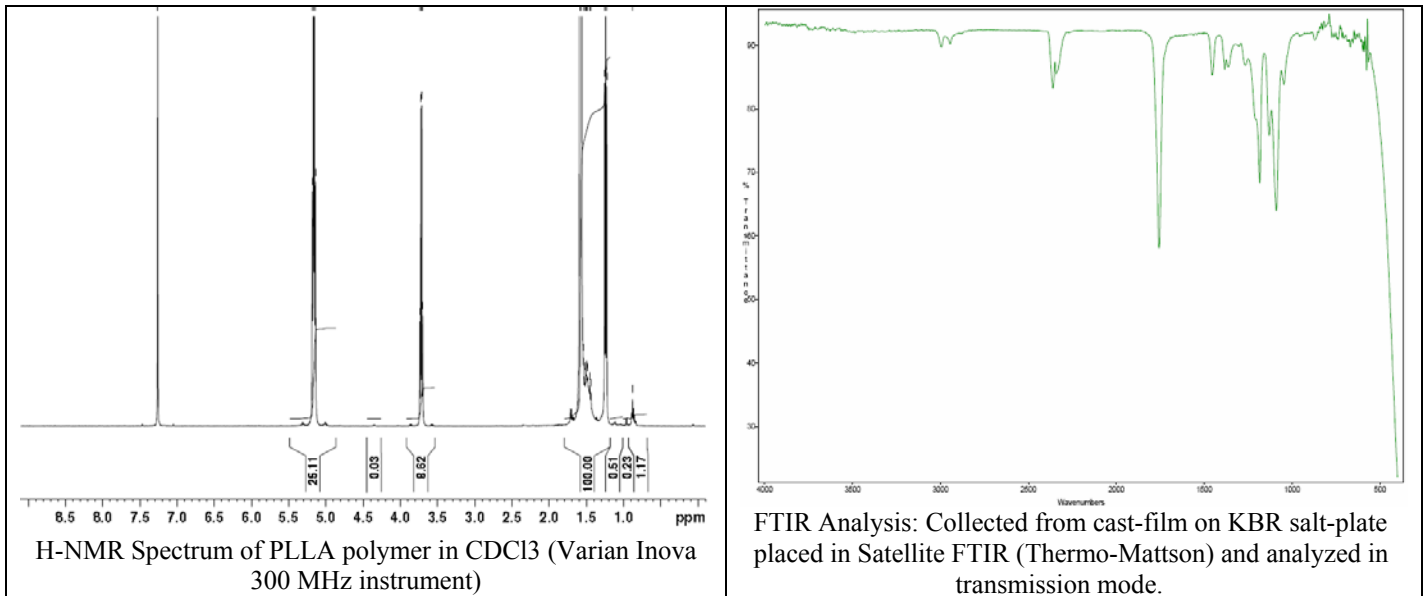
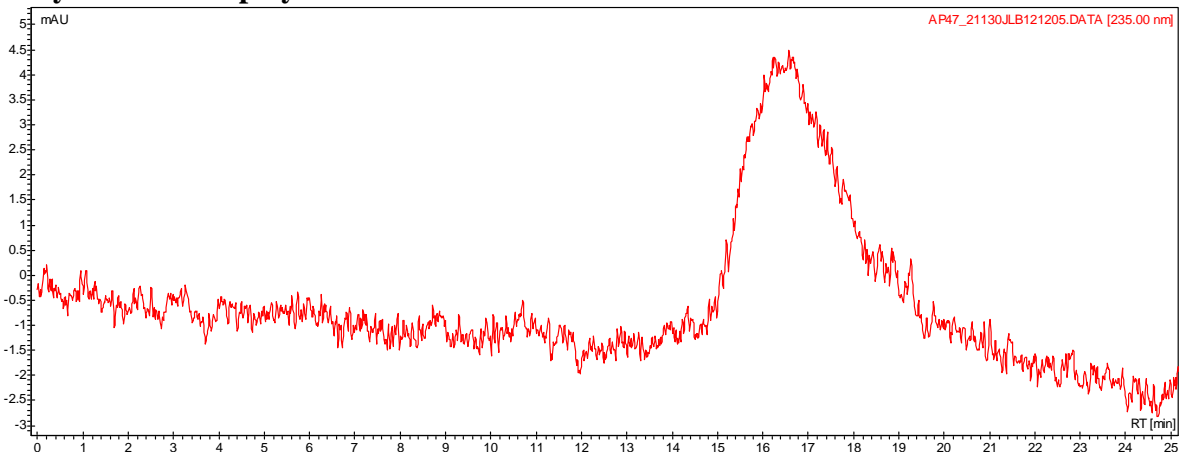


No. AP47 Certificate of Analysis

Product Name: Poly((L)Lactic acid) acid endcap (MW~ 40,000) (Lot#: 21130JLB)



- **GPC analysis of PLLA polymer**



Analysis Method: Varian Prostar system with 1 ml/min DCM flow across one PLGel Mixed-D column and one PLGel Mixed-E column and one phenogel 5u column (Agilent). Detection via UV/Vis, calibrated against polystyrene standards.

Polymer	Mn (from GPC)	Mw (from GPC)	PDI
PLLA	45935	83844	1.82

- **Structure of PLLA polymer**

