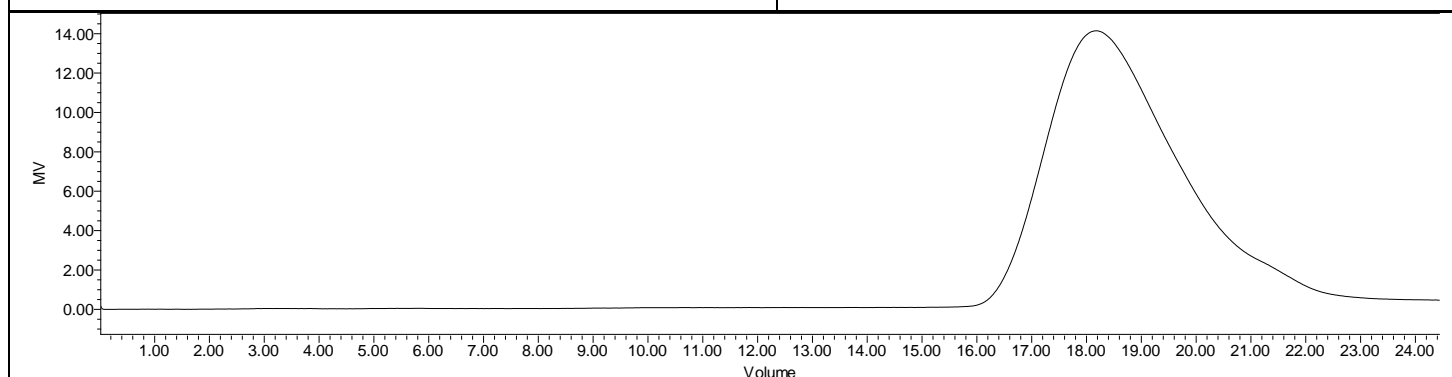
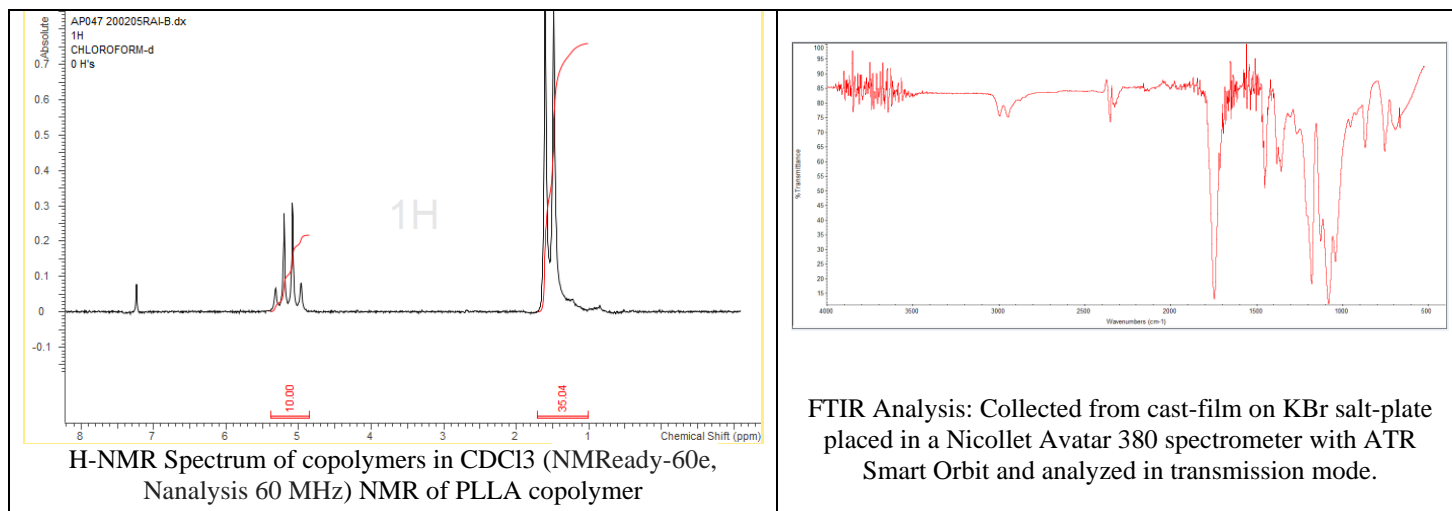


# No. AP047

# Certificate of Analysis



Product Name: Poly((L)Lactic acid) acid endcap ( $M_n$ : 45,000-55,000 Da)  
(Lot#: 200205RAI-B)



GPC Analysis Method: Waters Breeze 2 system with 1 ml/min THF flow across three GPC columns. Detection via refractive index, calibrated against polystyrene standards.

Polymer	$M_n$ (from GPC)	$M_w$ (from GPC)	PDI
PLLA	47,567	82,025	1.72

- Structure of PLA copolymers

