

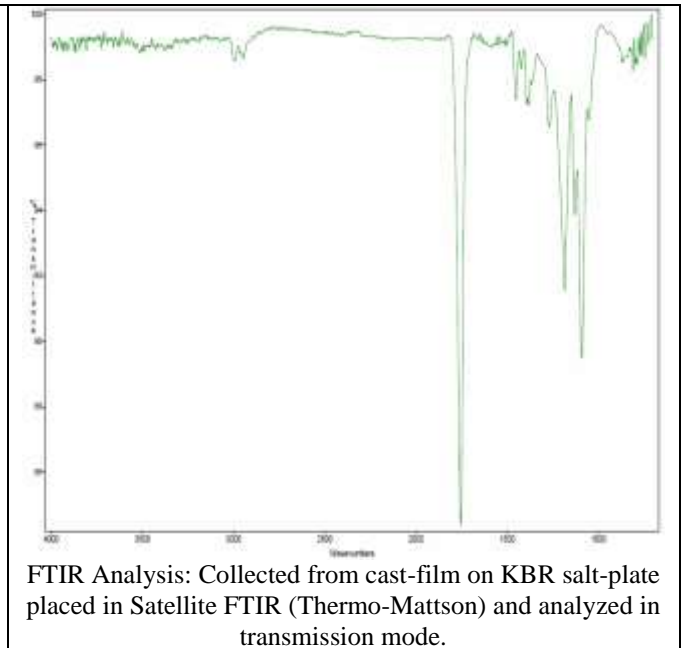
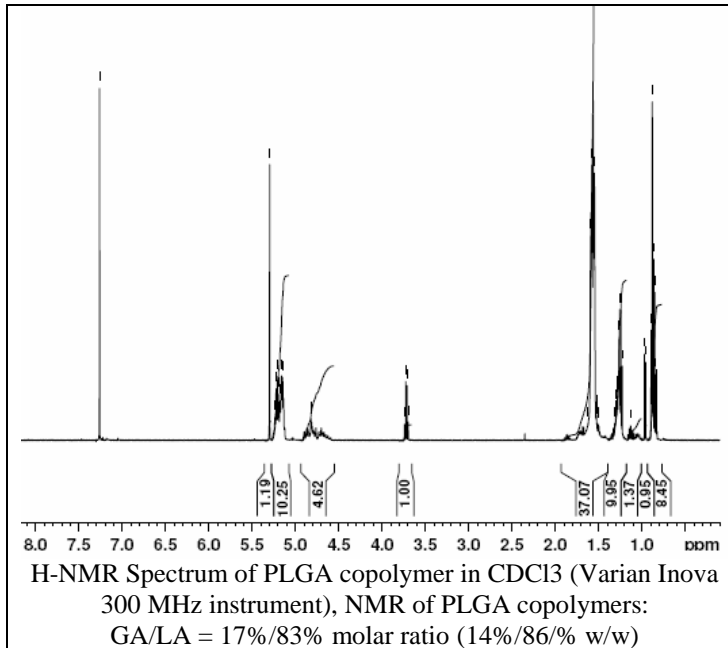
No. AP46

# Certificate of Analysis

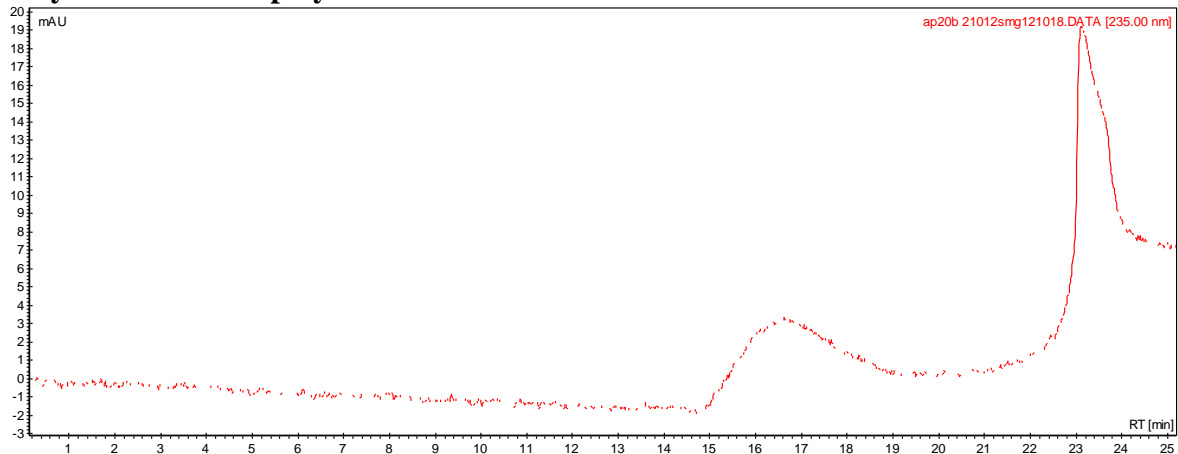


Product Name: Poly(lactic-co-glycolic) acid end cap (85:15 LA:GA, MW~ 100,000 Da)

(Lot#: 21012b SMG) REV:A



## • GPC analysis of PLGA copolymers



Analysis Method: Varian Prostar system with 1 ml/min DCM flow across one PLGel Mixed-D column and one PLGel Mixed-E column and one phenogel 5u column (Agilent). Detection via UV/Vis, calibrated against polystyrene standards.

Polymer	Mn (from GPC)	Mw (from GPC)	PDI
PLGA	97127	125943	1.30

## • Structure of PLGA copolymers

