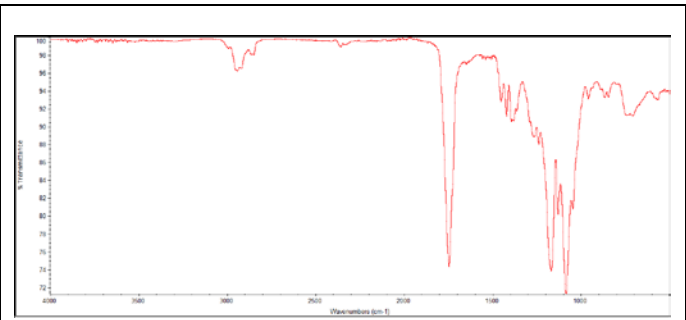
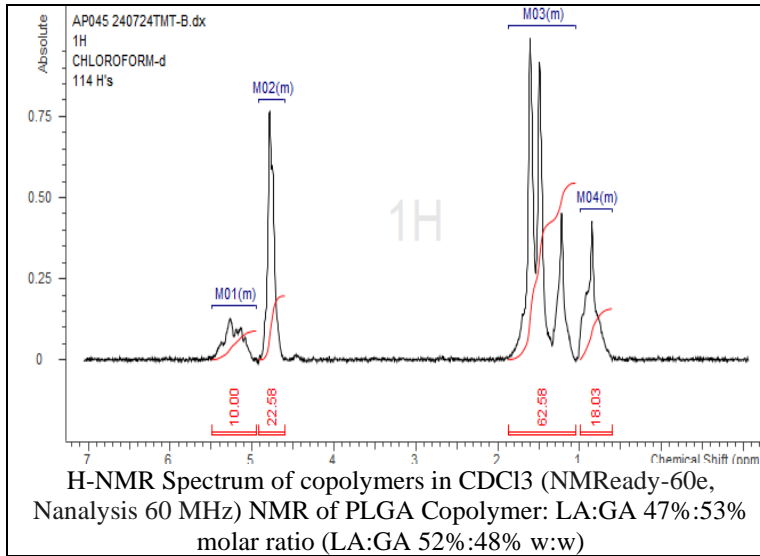


# No. AP045

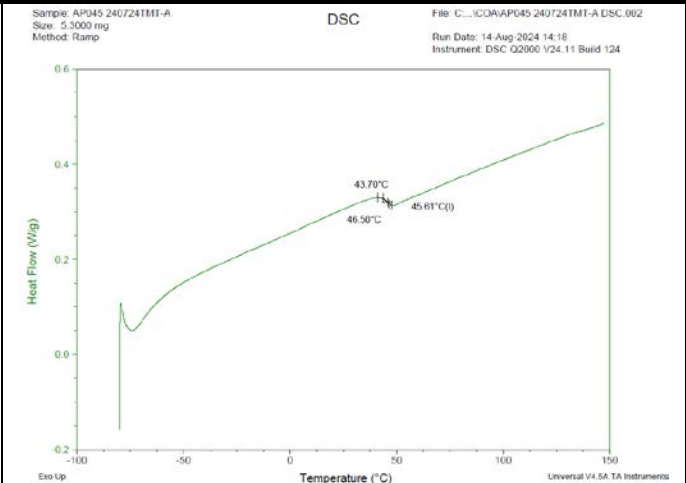
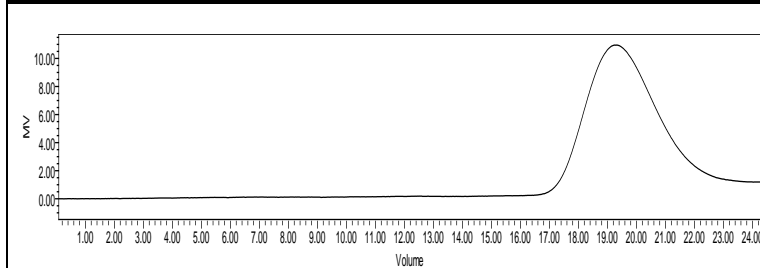
# Certificate of Analysis



Product Name: Poly(lactide-co-glycolide) acid endcap (50:50 LA:GA,  
Mn: 35,000-45,000Da) (Lot#: 240724TMT-B)



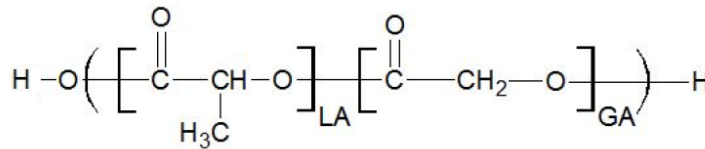
FTIR Analysis: Collected from IS5 ID7-ATR spectrometer (Thermo Scientific) and analyzed in transmission mode.



| Polymer | M <sub>n</sub> (from GPC) | M <sub>w</sub> (from GPC) | PDI  |
|---------|---------------------------|---------------------------|------|
| PLGA    | 35,380                    | 47,160                    | 1.32 |

GPC-ES Analysis Method: Waters Breeze 2 system with 1 ml/min THF flow across three GPC columns. Detection via refractive index, calibrated against polystyrene standards.

## Structure of PLGA copolymers



Approved By:  
*Amie Tyler*  
Quality Manager