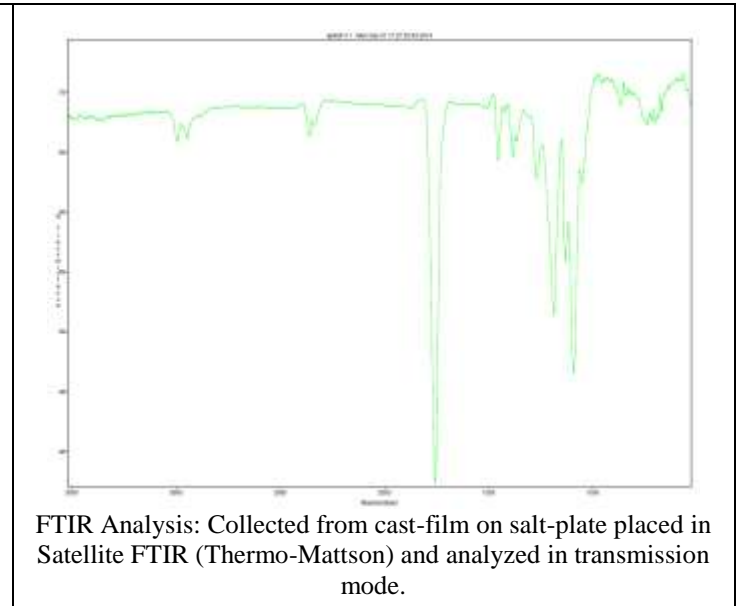
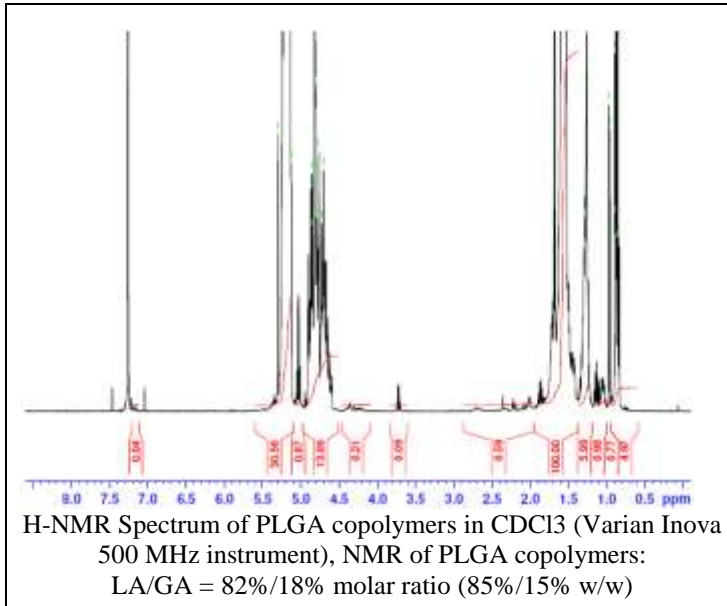


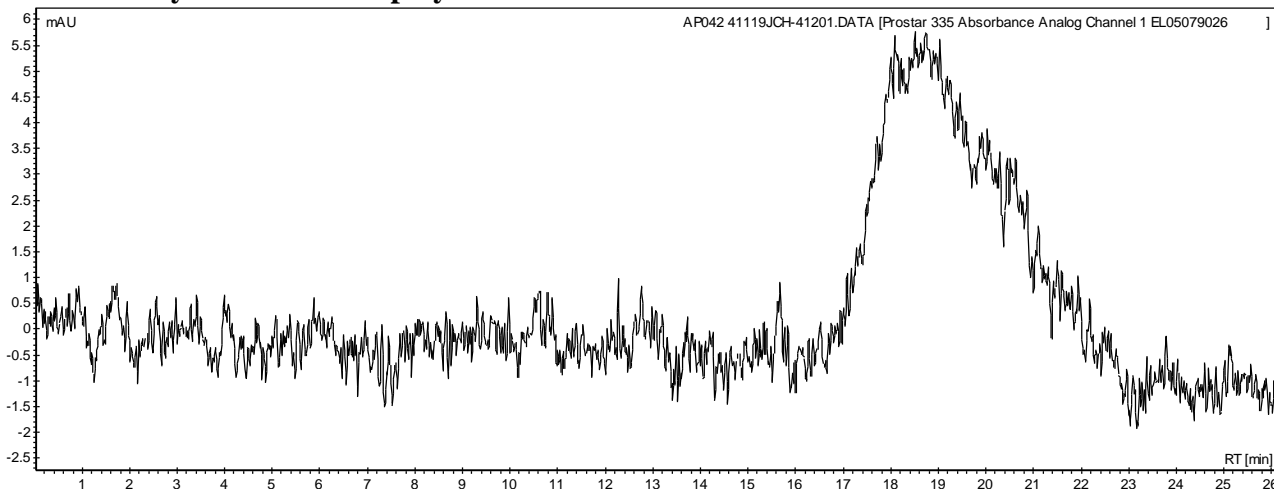
No. AP042

Certificate of Analysis

Product Name: Poly(lactic-co-glycolic) copolymers acid endcap (85:15 LA:GA, Mn: 25,000-35,000 Da) (Lot#: 41119JCH) REV:A



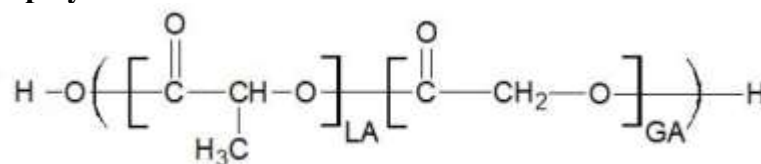
- GPC analysis of PLGA copolymers**



Analysis Method: Varian Prostar system with 1 ml/min DCM flow across two Phenogel 5µm columns and one PLgel Resipore column (Agilent). Detection via UV/Vis, calibrated against polystyrene standards.

Polymer	Mn (from GPC)	Mw (from GPC)	PDI
PLGA	25,718	71,514	2.78

- Structure of PLGA copolymers**



Material provided for research use only. Not for human use.