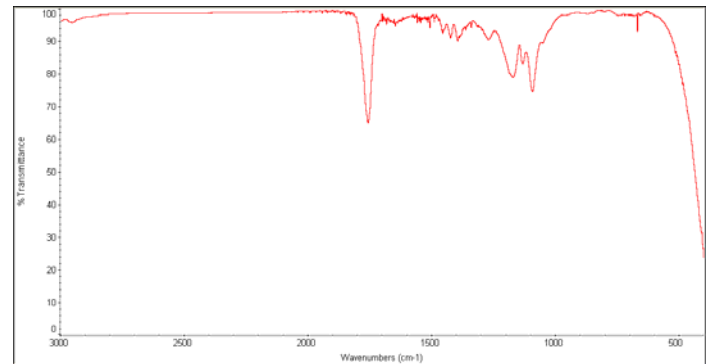
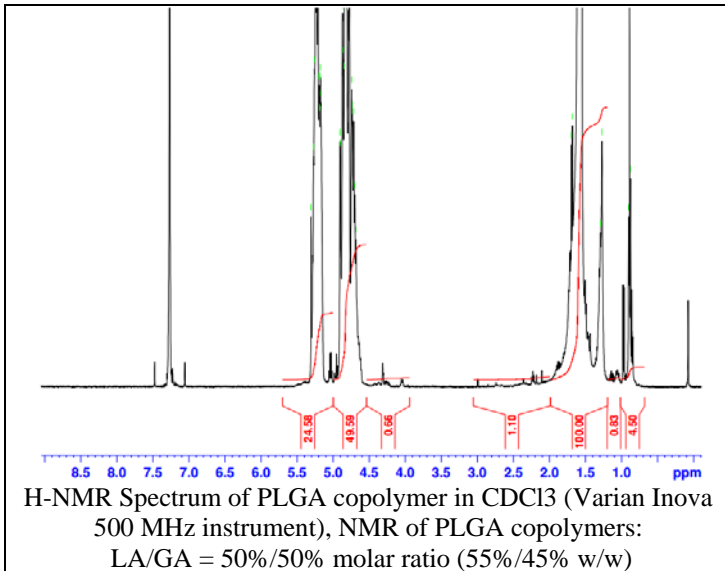


# No. AP041

# Certificate of Analysis

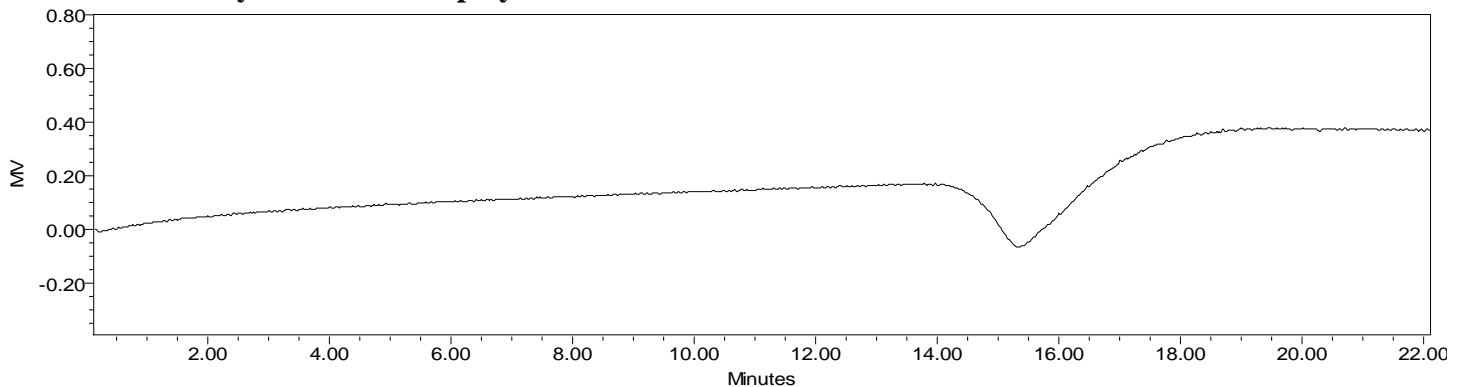


Product Name: Poly(lactide-co-glycolide) acid endcap (50:50 LA:GA) (Mn: 10,000-15,000 Da)  
(Lot#: 60729ELH-A)



FTIR Analysis: Collected from cast-film on salt-plate placed in Protégé 460 Spectrometer (Nicolet) and analyzed in transmission E.S.P. mode.

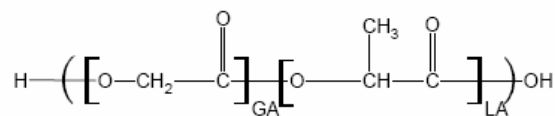
## • GPC analysis of PLGA copolymers



Analysis Method: Waters Breeze 2 system with 1 ml/min DCM flow across three 300 x 7.6 mm GPC columns (mixed porosities).  
Detection via refractive index, calibrated against polystyrene standards

Polymer	Mn (from GPC)	Mw (from GPC)	PDI
PLGA	12,308	30,327	2.46

## • Structure of PLGA copolymers



Material provided for research use only. Not for human use.