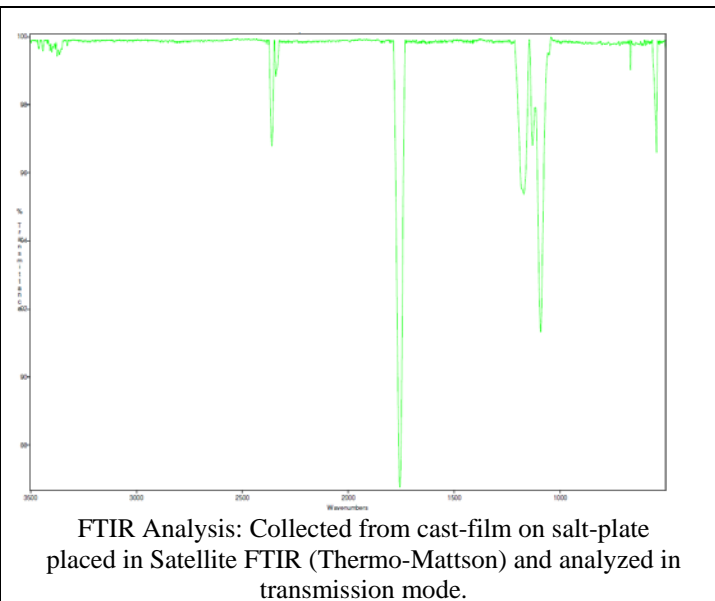
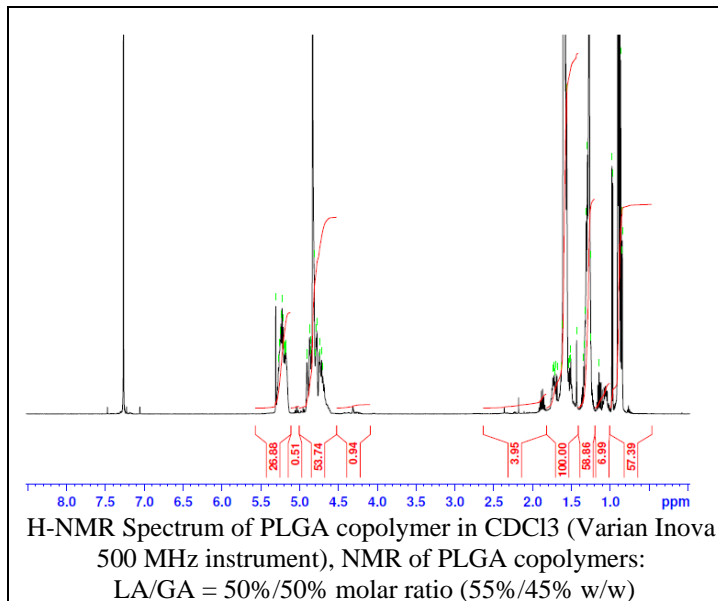


No. AP041

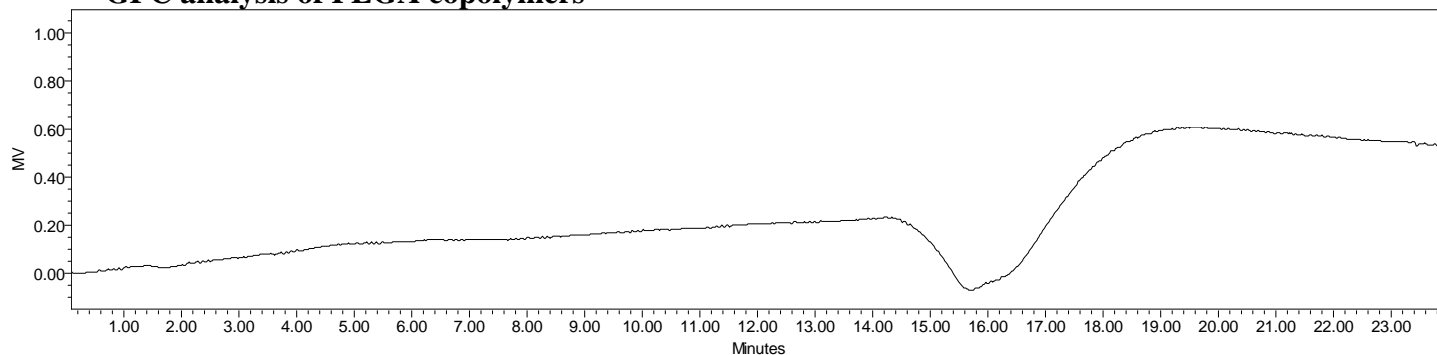
Certificate of Analysis



Product Name: Poly(lactide-co-glycolide) acid endcap (50:50 LA:GA) (Mn: 10,000-15,000 Da)
(Lot#: 60225ELH-A)



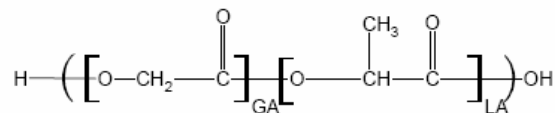
• GPC analysis of PLGA copolymers



Analysis Method: Waters Breeze 2 system with 1 ml/min DCM flow across two Phenogel 5 μ m columns and one PLGel Resipore column (Agilent). Detection via UV/Vis, calibrated against polystyrene standards.

Polymer	Mn (from GPC)	Mw (from GPC)	PDI
PLGA	13,856	21,986	1.59

• Structure of PLGA copolymers



Material provided for research use only. Not for human use.

PolySciTech Division of Akina, Inc. | 3495 Kent Avenue, West Lafayette, IN 47906

765-464-0390 | www.polysciotech.com

For research use only.