

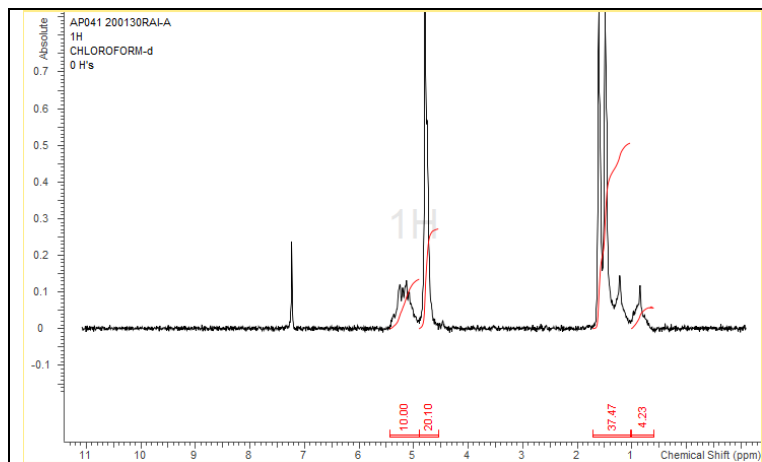
# No. AP041

# Certificate of Analysis

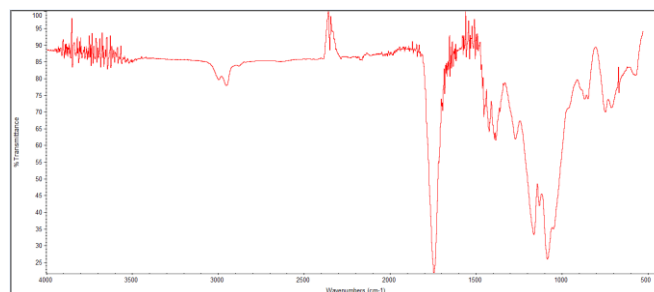


Product Name: Poly(lactide-co-glycolide) acid endcap (50:50 LA:GA)

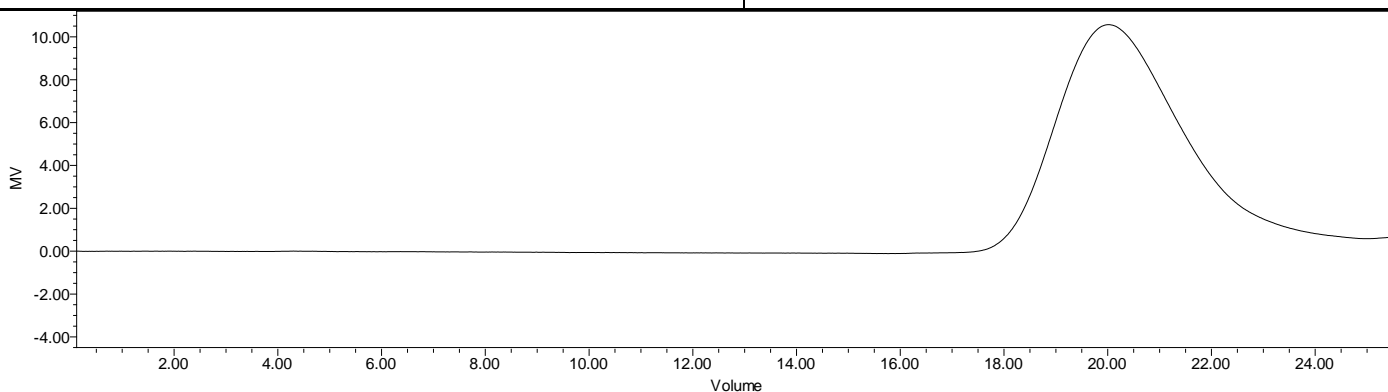
(Mn: 10,000-15,000 Da) (Lot#: 200130RAI-A)



H-NMR Spectrum of copolymers in CDCl<sub>3</sub> (NMReady-60e, Nanalysis 60 MHz) NMR of PLGA copolymer: LA-GA = 50%-50% molar ratio (LA-GA 55%-45% w-w)



FTIR Analysis: Collected from cast-film on KBr salt-plate placed in a Nicolet Avatar 380 spectrometer with ATR Smart Orbit and analyzed in transmission mode.



GPC Analysis Method: Waters Breeze 2 system with 1 ml/min THF flow across three GPC columns. Detection via refractive index, calibrated against polystyrene standards.

Polymer	M <sub>n</sub> (from GPC)	M <sub>w</sub> (from GPC)	PDI
PLGA	14,467	26,335	1.82

- **Structure of PLGA copolymers**

