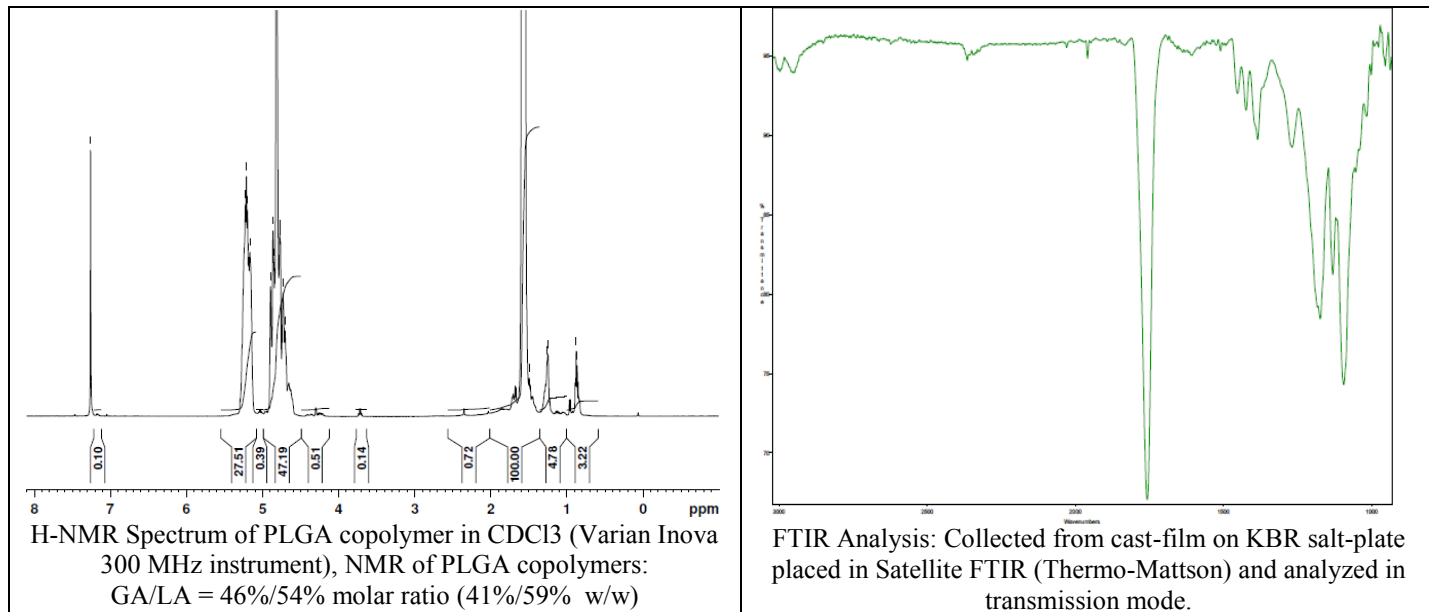


No. AP40

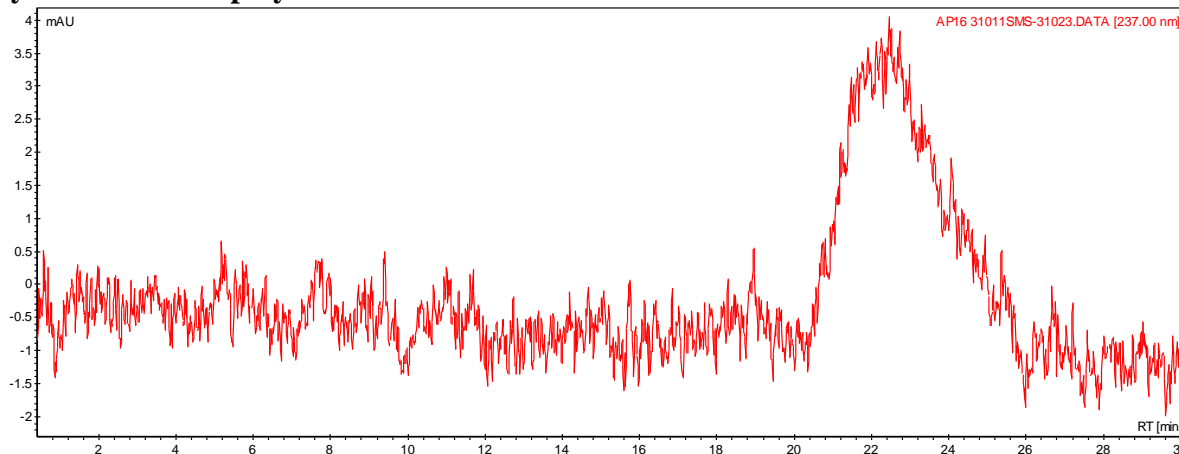
Certificate of Analysis



Product Name: Poly(lactide-co-glycolide) acid endcap (50:50 LA:GA, Mn: 15,000-25,000 Da)
(Lot#: 31011SMS) REV:A



GPC analysis of PLGA copolymers



Analysis Method: Varian Prostar system with 1 ml/min DCM flow across three phenogel 5u column (Agilent). Detection via UV/Vis, calibrated against polystyrene standards.

Polymer	Mn (from GPC)	Mw (from GPC)	PDI
PLGA	17,438	31,816	1.82

- Structure of PLGA copolymers

