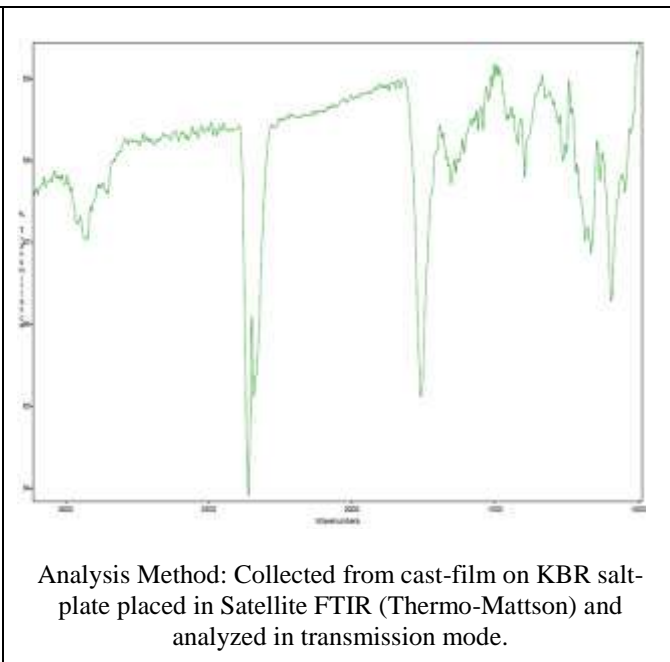
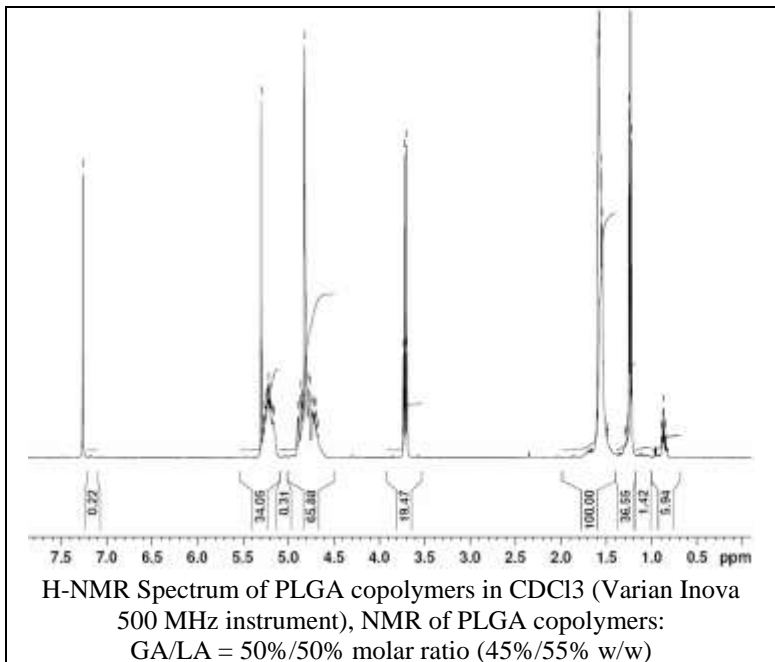


# No. AP40

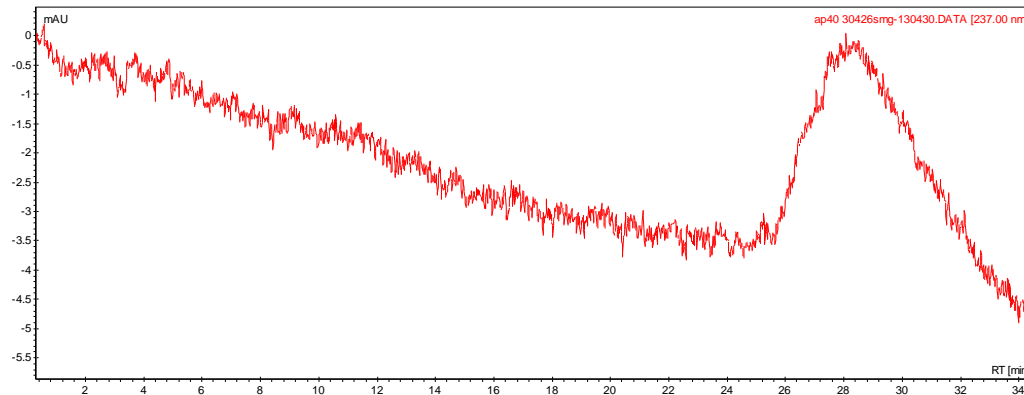
# Certificate of Analysis



Product Name: Poly(lactic-co-glycolic) acid endcap (1:1 LA:GA, Mn: 15,000-25,000 Da)  
(Lot#: 30426SMG) REV:A



- **GPC analysis of PLGA copolymers**



Analysis Method: Varian Prostar system with 1 ml/min DCM flow across two Phenogel 5u columns and one PLgel Resipore column (Agilent). Detection via UV/Vis, calibrated against polystyrene standards

| Polymer | Mn (from GPC) | Mw (from GPC) | PDI  |
|---------|---------------|---------------|------|
| PLGA    | 22618         | 33801         | 1.49 |

- **Structure of PLGA copolymers**

