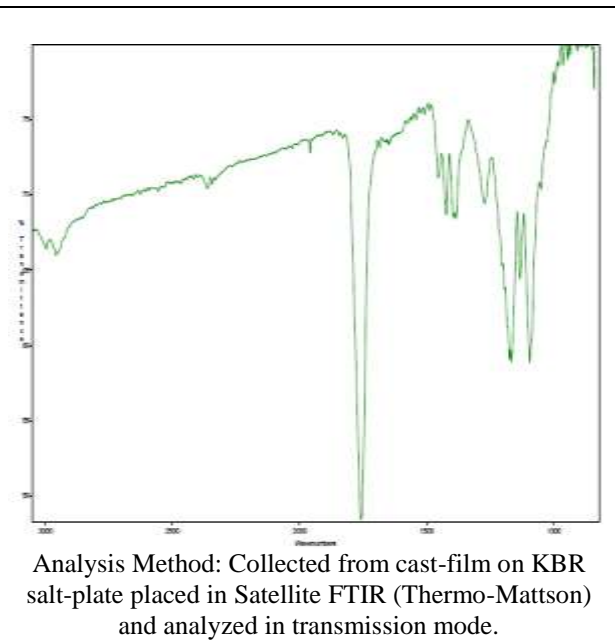
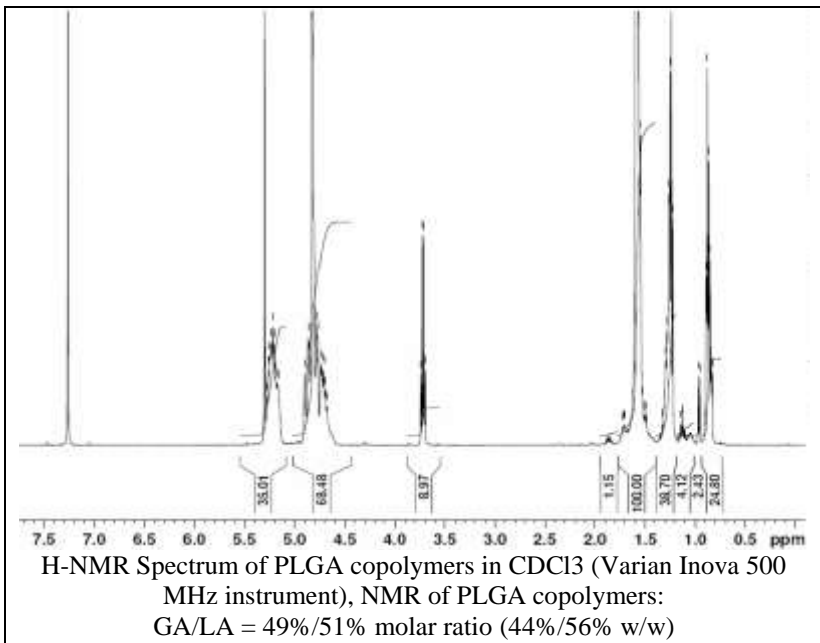


No. AP40

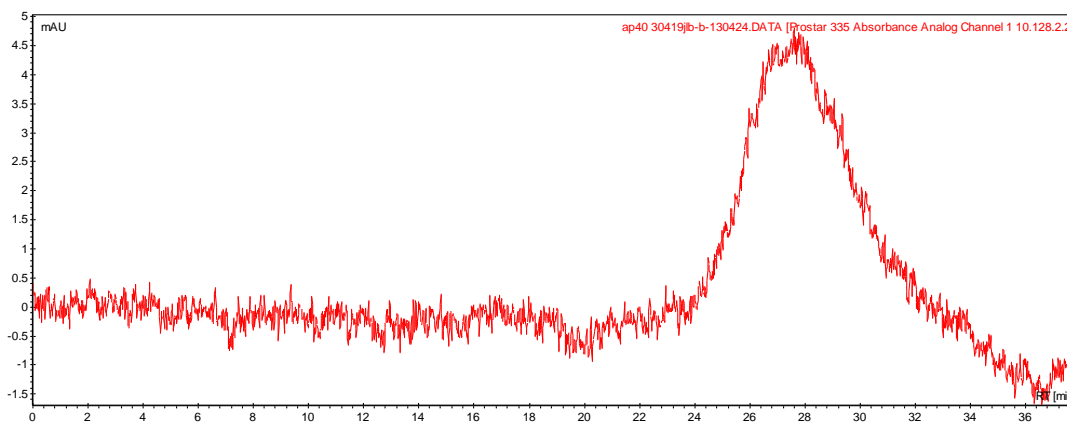
Certificate of Analysis



Product Name: Poly(lactic-co-glycolic) acid endcap (1:1 LA:GA, Mn: 15,000 - 25,000 Da)
(Lot#: 30419JLB-B) REV:A



- **GPC analysis of PLGA copolymers**



Analysis Method: Varian Prostar system with 1 ml/min DCM flow across two Phenogel 5u columns and one PLgel Resipore column (Agilent). Detection via UV/Vis, calibrated against polystyrene standards

Polymer	Mn (from GPC)	Mw (from GPC)	PDI
PLGA	24544	43162	1.76

- **Structure of PLGA copolymers**

