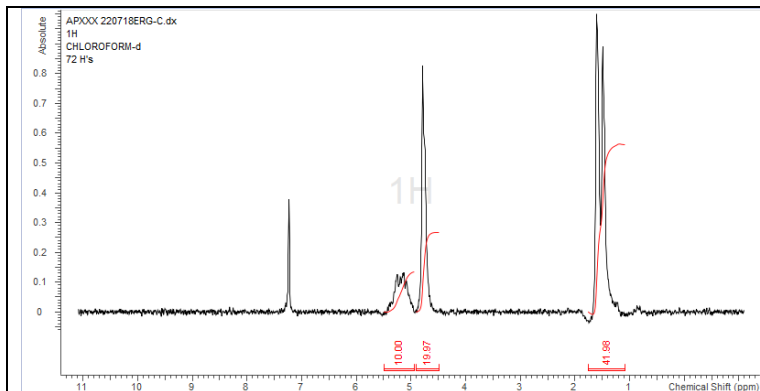


# AP040

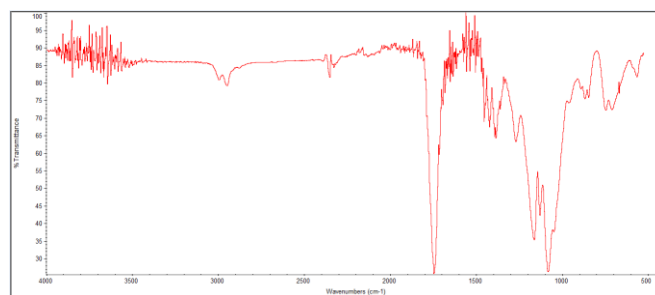
# Certificate of Analysis



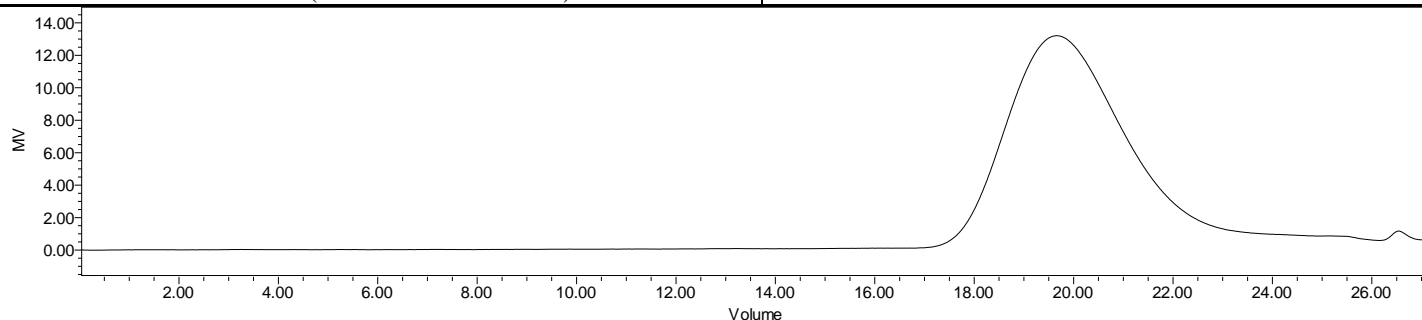
Product Name: Poly(lactide-co-glycolide) 50:50 LA:GA (Mn: 15,000-25,000 Da) (Lot#: 220718ERG-C)



H-NMR Spectrum of copolymers in CDCl<sub>3</sub> (NMReady-60e, Nanalysis 60 MHz) NMR of PLGA Copolymer: LA:GA 50%:50% molar ratio (LA:GA 55%:45% w:w)



FTIR Analysis: Collected from Nicolet Avatar 380 spectrometer with ATR Smart Orbit and analyzed in transmission mode.



GPC-ES Analysis Method: Waters Breeze 2 system with 1 ml/min THF flow across three GPC columns. Detection via refractive index, calibrated against polystyrene standards.

Polymer	M <sub>n</sub> (from GPC)	M <sub>w</sub> (from GPC)	PDI
PLGA	18,235	33,183	1.81

- **Structure of PLGA copolymers**

