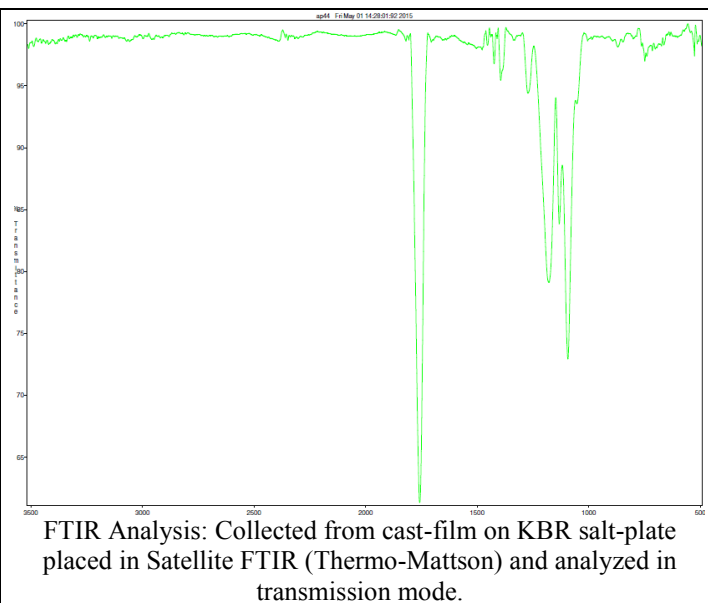
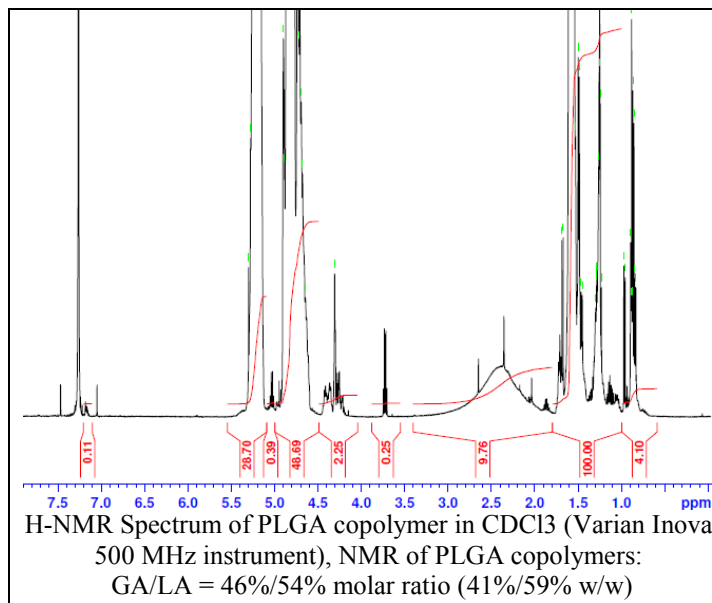


No. AP37

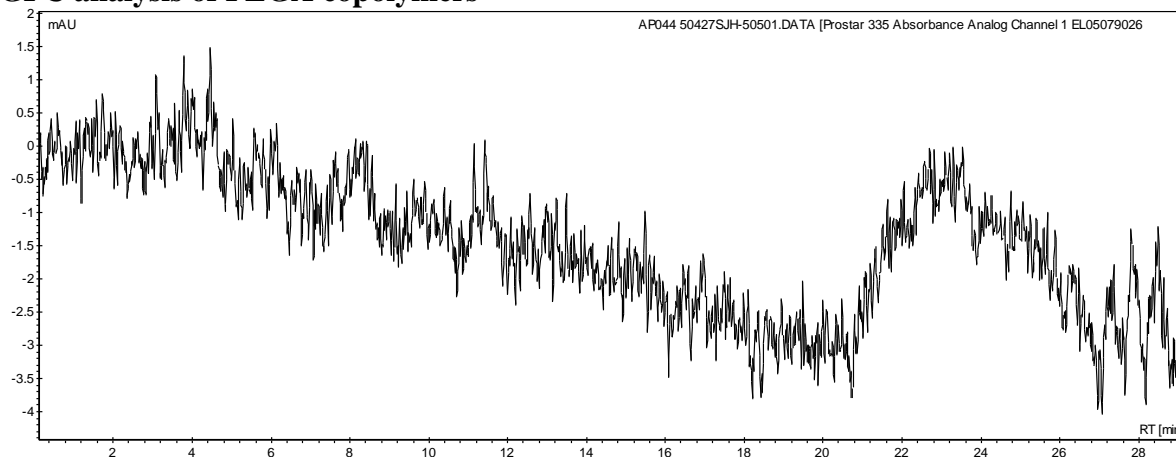
Certificate of Analysis



Product Name: Poly(lactic-co-glycolic) Copolymers (50:50 LA:GA, Mn: 1,000-5,000 Da)
(Lot# 50427SJH)



- **GPC analysis of PLGA copolymers**



Analysis Method: Varian Prostar system with 1 ml/min DCM flow across one PLGel Mixed-D column, one PLGel Mixed-E column, and one phenogel 5u column (Agilent). Detection via UV/Vis, calibrated against polystyrene standards.

| Polymer | Mn (from GPC) | Mw (from GPC) | PDI |
|---------|---------------|---------------|------|
| PLGA | 1,613 | 3,429 | 2.13 |

- **Structure of PLGA copolymers**

