

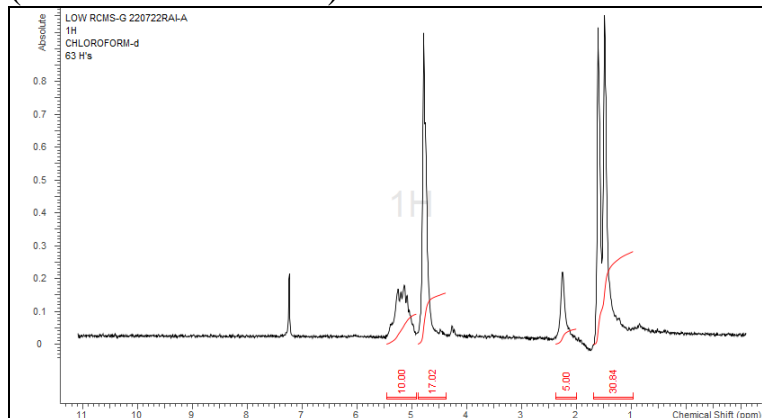
AP037

Certificate of Analysis

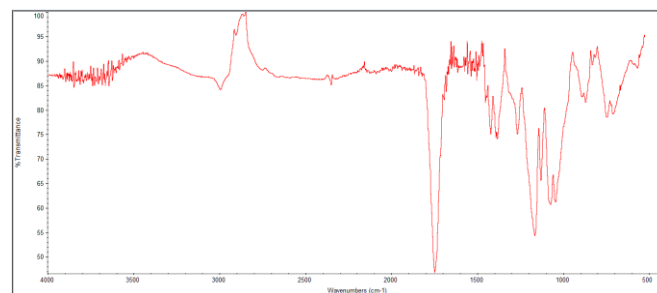


Product Name: Poly(lactide-co-glycolide) 50:50 LA:GA (Mn: 1,000- 5,000Da)

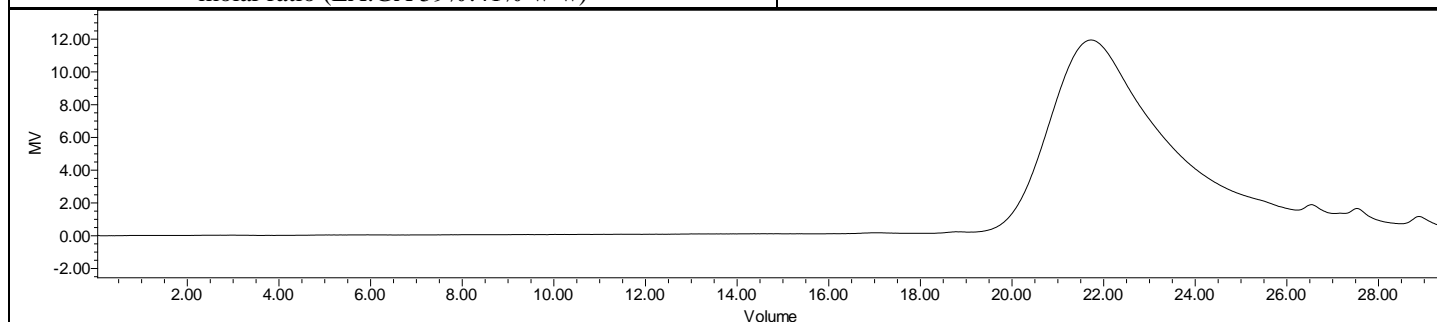
(Lot#: 220722RAI-A)



H-NMR Spectrum of copolymers in CDCl₃ (NMReady-60e, Nanalysis 60 MHz) NMR of PLGA Copolymer: LA:GA 54%:46% molar ratio (LA:GA 59%:41% w-w)



FTIR Analysis: Collected from Nicolet Avatar 380 spectrometer with ATR Smart Orbit and analyzed in transmission mode.



GPC-ES Analysis Method: Waters Breeze 2 system with 1 ml/min THF flow across three GPC columns. Detection via refractive index, calibrated against polystyrene standards.

Polymer	M _n (from GPC)	M _w (from GPC)	PDI
PLGA	3,984	7,103	1.78

- Structure of PLGA copolymers**

