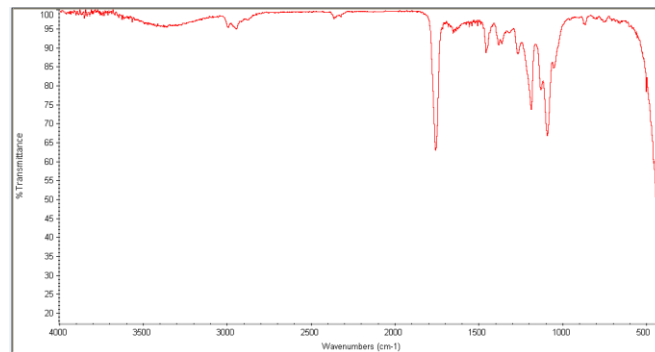
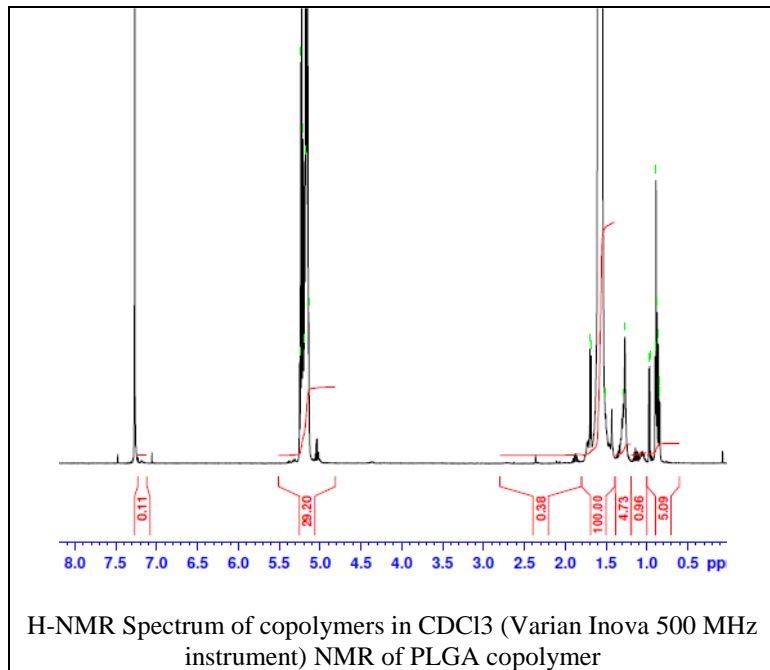


# No. AP035

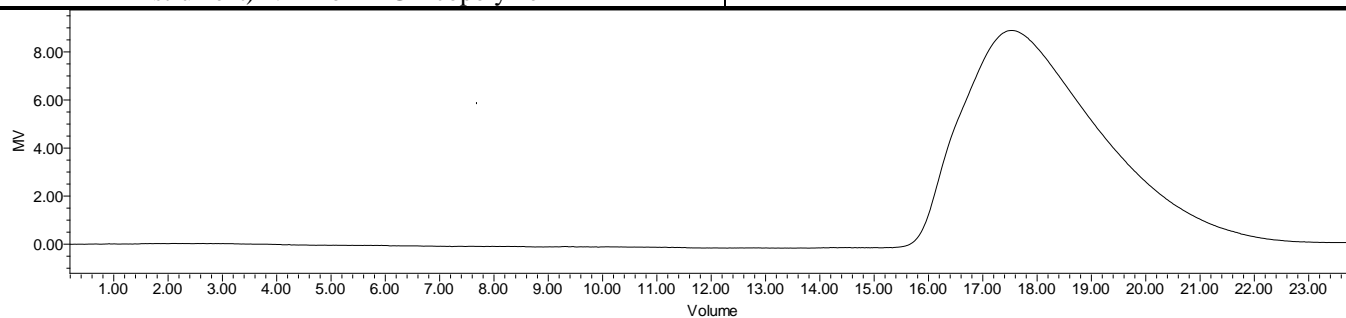
# Certificate of Analysis



Product Name: Poly(D,L-lactide) acid endcap ( $M_n$  55,000-65,000 Da)  
(Lot# 180612RAI-A)



FTIR Analysis: Collected from cast-film on KBr salt-plate placed in Nicolet Avatar 320 spectrometer and analyzed in transmission mode.



GPC Analysis Method: Waters Breeze 2 system with 1 ml/min THF flow across three GPC columns. Detection via refractive index, calibrated against polystyrene standards.

Polymer	$M_n$ (from GPC)	$M_w$ (from GPC)	PDI
PLA	61,313	120,468	1.96

- Structure of PDLLA**

